



Renewables
Radiators
This is your guide to Heating
Packaged Products
Fires

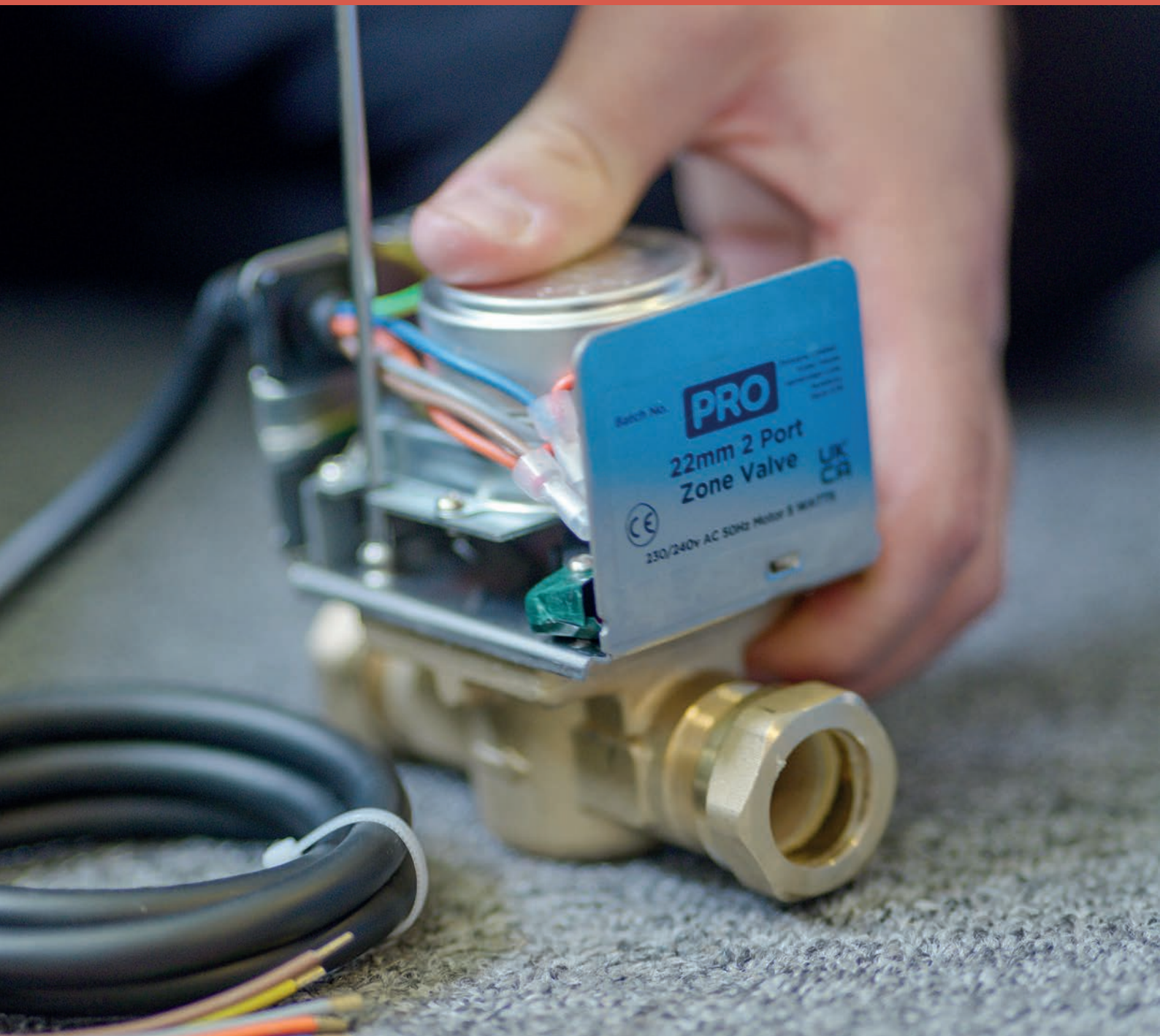
Heating Product Range

Our heating range brings together the essential products your customers rely on every day – from well-known boiler brands, reliable cylinders, pumps, controls, and renewable-ready solutions. Whether you're servicing domestic upgrades, full installations, or emergency repairs, having the right products readily available is essential.

This guide showcases a carefully selected range of heating products from leading manufacturers – offering you a trusted, high-quality assortment that supports everything from traditional systems to modern energy-efficient solutions.

By ordering through Primaflow F&P, you gain access to a wide and competitive selection that can be easily stocked in-branch or used to support a broader product offering. With our reliable delivery, merchant support, and depth of stock, you can serve your customers with confidence.

Whether used for restocking your core lines or expanding your heating offer, this guide is here to help you meet demand – quickly, efficiently, and profitably.





Contents

Water Treatment

Adey	4	Glow-worm	12
Surestop	4	Grant	12
Fernox	6-7	Ideal Heating	12
PRO	8	Keston	12
Scalemaster	9	Vaillant	13
Sentinel	10	Worcester	13

Pumps

Grundfos	14
PRO	16
Wilo	17

Radiator Valves & TRVs

Danfoss	18
Drayton	19
Pegler	28
PRO	31-32

Heating Controls

Drayton	21	Ideal Heating	35
Hive	21	Keston	35
Honeywell Home	24	Potterton	36
Neomitis	27	Vaillant	36
PRO	33	Megaflo	36
Baxi	34	Viessmann	37
Glow-worm	34	Worcester	37
Grant	34	TotalHome	38

Valves & Fittings

Inta	26
Tesla UK	29
PRO	30
Watts	40

Water Heaters

Ariston	42
Heatrae Sadia	44-45

Cylinders

Gledhill	46
Grant	47
Main	48
Megaflo	49
Heatrae Sadia	49
Vaillant	50

Cylinder Accessories

Polytank	51
Zilmet	52

Insulation

Davant	53
Topsleeve	53

Chemicals

Inhibitor



Code	Description	MPN
70070080	MC1 Protector MCIP	MCIP
189352	MC1+ 500ml	CH1-03-01669
189319	MC1+ Protector 5 Litre	CH1-03-01723
189345	MC1+ Rapide 300ml Protector	CH1-03-01640

Biocide



Code	Description	MPN
18941601	MC10+ Biocide 500ml	CH1-03-03268-WE
189359	Rapide MC10+ 300ml	CH1-03-02040

Domestic Filters



Code	Description	MPN
18941201	Magnaclean Atom	FL1-03-03779
18932501	Magnaclean HP 28mm Filter	FL1-03-06223
189344	MagnaClean Professional 2XP 28mm	FL1-03-01357
18942001	Mini System Adaptor (pair)	PK2-03-04754
189318	Magnaclean Inline Professional 2 22mm Filter	CP1-03-00022-01
70070077	Magnaclean Micro	MCM22001
189341	Magnaclean Micro2 Inline Filter Black	FL1-03-01274
70070022	MagnaClean professional heating system filter 22mm	FL1-03-07129
189306	Magnaclean Twintech 22mm	MCTT001
70070079	Magnaclean Complete Solutions kit	MACK01
189304	Vibraclean VCO01/VCO02	VCO01/VCO02

Magnetic



Code	Description	MPN
18942301	Magnascale2 15mm Compression	SR1-03-05230

Cleaner



Code	Description	MPN
70070081	MC3 Cleaner MC3C	MC3C
189353	MC3+ 500ml	CH1-03-01670
189322	MC3+ Cleaner 10 Litre	CH1-03-01726
189346	MC3+ Rapide 300ml Cleaner	CH1-03-01645
189336	MC5 Rapidflush System Cleaner 10 Litre	CP1-03-01001
70070082	MC5 Rapidflush System Cleaner	CP1-03-00999

Anti-freeze



Code	Description	MPN
189338	MCZero Anti-Freeze Liquid 10 Litre	CP1-03-01045

Packs



Code	Description	MPN
18941501	Magnaclean Atom Chemical Pack	FL1-03-05120
189351	Micro Chemical Pack With MCIP & MC3C	FL1-03-01867
189342	Magnaclean Micro2 Filter Chemical Pack	FL1-03-01275
189350	Magnaclean Pro1 Filter Chemical Pack	FL1-03-01868
189312	Magnaclean Professional Sheath Upgrade Kit 28mm	SH28PK
70070078	Magnaclean Professional2 Chemical Pack	CP1-03-00625-01
189317	Magnaclean Upgrade Pack	MCUPPK

Testing Kits



Code	Description	MPN
18942701	Magnaclean Professional Seal Pack	SEAPKPRO
18942601	Pro2/Micro Service Pack	PK2-02-00829-01
18941701	ProCheck Test Kit (25 Tests)	CP1-03-05132

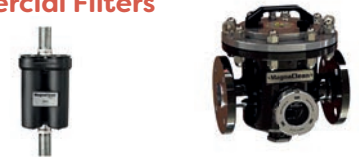
Leak Sealer



Code	Description	MPN
189358	Magnaclean MC4+ Rapide 300ml	CH1-03-02039
189332	MC4 Leak Sealer Liquid 500ml	CP1-03-00998
18942401	MCXS - External Leak Sealant & Jointing Compound	CH1-03-05833

Filters

Commercial Filters



Code	Description	MPN
189347	Magnaclean Dual XP 35mm/42mm	FL1-03-02028
189404	Magnaclean 2 Inch Commercial	CP1-03-01123-FAM
189405	Magnaclean 3 Inch Commercial	CP1-03-01124-FAM
189412	Magnaclean 3 Inch Commercial Jacket	CP1-03-01886
189406	Magnaclean 4 Inch Commercial	CP1-03-01125-FAM
189407	Magnaclean 6 Inch Commercial	CP1-03-01126

Scale Reducers Electrolytic



Code	Description	MPN
18942101	Electroscale2 15mm Compression	SR1-03-05214
18942201	Electroscale2 22mm Compression	SR1-03-05233

Refills



Code	Description	MPN
18941801	ProCheck Refill Kit (25 Tests)	PK2-03-05133

Valves Stopcock



Code	Description	MPN
10045850	Remote water switch 15mm	SS/15/RPL
10045852	Remote water switch 22mm	SS/22/RPL
10045856	Stopcock 15mm pushfit	SS/15/SPL
10045859	Stopcock 22mm pushfit	SS/22/SPL

PREVENT PROTECT PROLONG

From first flush to final protection –
ADEY's chemicals do the hard work for you.



ADEY[®]

adey.com

Chemicals Anti-freeze



Code	Description	MPN
50010112	Alphi 11 protector/antifreeze 5lt	61033
231046	Anti Freeze Alpha 11 25 litre	23980

Descaler



Code	Description	MPN
50010276	DS3 descaler 2kg	61027

Compounds Leak Sealer



Code	Description	MPN
50010255	Leak sealer - external 50g (LSX)	61016
50010302	LP Sterox 1 litre	56609
50010337	Central Heating Leak Sealer F4 Express 400ml	62422
50010254	F4 leak sealer 500ml (formerly LSI)	56603

Biocide



Code	Description	MPN
50010246	Biocide F7 10 Litre Drum	62598
50010245	Biocide F7 200ml	62393

Heat Transfer Fluid



Code	Description	MPN
50010340	Heat Transfer Fluid HP-EG 20 Litre	62595
231138	Solar S1 Inhibited Heat Fluid 20 litre	57674
231157	Solar S1 Inhibited Heat Fluid 10 litre	57675

Filters



Code	Description	MPN
50010345	Sigma UB Filter	62631
231161	TF1 Omega 22mm Filter c/w Valves	62249
231162	TF1 Omega 22mm Filter Without Valves	62248
231163	TF1 Omega 28mm Filter C/W Valves	62252
231164	TF1 Omega 28mm Filter Without Valves	62251
50010102	TF1 Omega Filter Seal And O-Ring Kit(Valves)	62334
231169	TF1 Omega Flushing Adaptor	62289
23117201	TF1 Sigma 22mm Slip Socket	62414
23117301	TF1 Sigma 22mm With Valves	62415
23117401	TF1 Sigma 28mm With Valves	62417
50010338	TF1 Sigma HP Filter 22mm	62614
50010339	TF1 Sigma HP Filter 28mm	62615
50010352	TF1 Sigma Mini 22mm Slipsocket	62708
50010435	TF1 total filter for heating system 28mm	59257

Cleaner



Code	Description	MPN
231043	DS10 7 kg Dry-Side Cleanser	61029
50010184	DS40 Cleaner And Descaler	62475
50010438	Central Heating Cleaner 500ml F3 (EU Only)	62095
50010336	Central Heating Cleaner F3 Express 400ml	62420
50010343	Cleaner F3 10 Litre	62555
23118501	Cleaner F3 265ml	62455
50010240	F3 cleaner 500ml	56600
50010186	Power Cleaner F8	62486
50010439	Power Cleaner F8 (EU Only)	62487
50010185	System Neutraliser 2 Litre	62482

Inhibitor



Code	Description	MPN
50010334	Central Heating Protector F1 Express 400ml	62418
23118401	Protector F1 265ml	62454
50010234	F1 protector 500ml	56599
50010342	Protector F1 10 Litre	62554
231165	Filter Fluid & Protector Express 400ml	62310
231159	F9 Filter Fluid+ Protector 500ml	62234

Installer Packs



Code	Description	MPN
23117701	TF1 Omega Filter Installer Pack	62506
231148	TF1 Omega Installers Pack 22mm w Valves	62368
23117601	TF1 Sigma Filter Installer Pack	62509
50010347	TF1 Sigma UB Filter Installer Pack	62677

265ml Range

Good things come in small bottles

- Treats an average sized UK home of up to 100L, 12 radiators and 190sqm of underfloor heating
- Smaller volume product – less packaging waste and lower environmental impact
- Conveniently dosed via any Fernox Filter TF1



Product code: 23118401

Product code: 23118501

www.fernox.com

Fernox, 2 Genesis Business Park, Albert Drive, Sheerwater, Woking, Surrey GU21 5RW sales@fernox.com

Scale Reducers Electrolytic



Code	Description	MPN
23107201	15mm Compression Electrolytic Scale Reducer	62551
23118701	Electrolytic Scale Reducer 22mm Compression	62552

Magnetic



Code	Description	MPN
231170	22mm Compression Magnetic Scale Reducer 62302	62302
231048	Fry Magnetic Scale Reducer	58264

Testing Kits



Code	Description	MPN
50010351	Corrosion And PH Test(Vial Of 50 Strips)	62684
50010341	Express Inhibitor Test	62514
231060	Refractometer	55586
50010306	System check test kit (postal sampling)	61161
231171	TF1 Service Kit 59288	59288
231101	Total Dissolved Solids Meter	37641

Valves Anti-Freeze



Code	Description	MPN
50010349	TF1 Antifreeze Valve 1 1/4"	62665
50010348	TF1 Antifreeze Valve 28mm	62664

Antifreeze Valve Thermal Cover



Code	Description	MPN
23118901	TF1 Antifreeze Valves Thermal Cover 1.25"	62691
23118801	TF1 Antifreeze Valves Thermal Cover 1"	62690

Chemicals Anti-freeze



Code	Description
50080058	Inhibited Antifreeze 5 Litre

Biocide



Code	Description
50080059	Biocide 500ml

Cleaner



Code	Description
50080053	Cleaner 500ml
50080055	Cleaner 1 Litre

Heat Transfer Fluid



Code	Description
50080061	Heat Transfer Fluid 10 Litre

Inhibitor



Code	Description
50080052	Inhibitor 500ml
50080056	Inhibitor 1 Litre

Scale Reducers Electrolytic



Code	Description
11732220	15mm Electrolytic Inline Scale Reducer

Leak Sealer



Code	Description
50080060	External Leak Sealer 50g
50080057	Leak Sealer 1 Litre
50080054	Leak Sealer 500ml

Filters Domestic Filters



Code	Description
11732221	22mm Inline Magnetic Filter
11732224	22mm Micro Inline Magnetic Filter
11732222	28mm Inline Magnetic Filter

Chemicals Biocide



Cleaner



Inhibitor



Code	Description	MPN	Code	Description	MPN	Code	Description	MPN
50090138	SM7 Biocide 250ml Bottle	500485	50090134	SM3 Cleaner 250ml Bottle	500447	50090132	SM1 Inhibitor 250ml Bottle	500423
						189551	10 Year Corrosion Inhibitor 22mm	600017

Scale Reducers Magnetic



Water Conditioner



Code	Description	MPN	Code	Description	MPN
70091252	Magnetic scale inhibitor -"gold" metal body 15mm CxC	400143	70091370	Condensmaster condensate neutralizer 22mm	600703
70091259	Magnetic scale inhibitor -"gold" metal body 22mm CxC	400259			

**Chemicals
Biocide**



Code	Description	MPN
189213	X700 Biocide 1 litre	X700L-12X1L-GB
189182	R700 Sanitiser and Biocide 1 Litre	1ltr R700

Inhibitor



Code	Description	MPN
189171	R100 Solar Inhibitor 20 Litre	20ltr R100
189250	X100 20 Litre Drum	X100L-20L-GB
50015101	X100 inhibitor 1 litre	X100L-12X1L-EXPA
50015107	X500 Inhibited Antifreeze 5 litre	X500L-4X5L-GB

Sludge Remover



Code	Description	MPN
50015125	X400 Sludge Remove Cleaner 1 litre	X400L-12X1L-EXPA
189242	X400 Sludge Remover 300ml Rapid Dose	X400RD-12X300ML-GB

**Scale Reducers
Electrolytic**



Code	Description	MPN
189283	Electrolytic Scale Reducer 15mm SESI	SESI15
189284	Electrolytic Scale Reducer 22mm SESI	SESI22

Cleaner



Code	Description	MPN
50015119	X300 New System Cleaner 1 litre	X300L-12X1L-EXP
189207	X800 Fast Acting Cleaner 1 Litre	X800L-12X1L-GB
189186	R200 Solar Cleaner 20L	R200-20L-DRUM
189172	Solar Cleaner 10 Litre	10ltr R200

Leak Sealer



Code	Description	MPN
50015146	Internal leak sealer 1 litre	LS-12X1L-GB
189220	Internal Leak Sealer 1 Litre	LS-12X1L-GB
189243	Rapid Dose Leak Sealer 12x300ml	LS_RD-12X300ML-GB

**Filters
Domestic Filters**



Code	Description	MPN
189288	Condensafe Plus Neutraliser	CONDENSASE-PLUS-EXP
18921401	Vortex300 22mm with Plastic T-Piece	V300-GRP22-EXP
18928901	Condensafe Plus Refill	CONDENSASE+REFILL-EXP
50015102	Eliminator Vortex 700 GRP 28	ELIMV700-GRP28-EXP

Heat Transfer Fluid



Code	Description	MPN
189181	R600 Thermal Fluid 20 litre	20ltr R600
189185	R500C Thermal Fluid Concentrate for Ground Source systems	R500C-20L-DRUM

Noise Reducer



Code	Description	MPN
50015110	X200 noise reducer 1 litre	X200L-12X1L-EXP

Packs



Code	Description	MPN
189232	System Check Pack	SYSCHECK-GB

**Testing
Kits**



Code	Description	MPN
50015114	InstaCheck Engineers Test Kit GB/FR	INSTACHECKKIT
189222	Inhibitor Test Kit	X100T-T-EXP

The Best Just Got Better!

Vortex 300

The image shows a Sentinel Vortex 300 heating filter. It is a black, cylindrical device with a silver-colored top and bottom. The top has a handle and a cap. The front of the device has a silver-colored plate with the 'sentinel' logo and 'Vortex 300' text. The bottom has a T-piece connection with two ports. The device is set against a background of concentric circles.

Vortex 300



COMPACT CENTRAL
HEATING FILTER



NON-BLOCKING
DESIGN ASSEMBLY



360° POSITIONABLE
T-PIECE



HIGH-QUALITY
BRASS VALVES



10-YEAR
GUARANTEE



9000 GAUSS
MAGNET

The **market-leading Vortex 300** has been redesigned to be smarter and even easier to use, without compromising on its industry-leading performance.

With a new premium look and improved functionality, this advanced filter is built to last, ensuring the best system protection for years to come.

Upgraded design, same unrivalled performance

- **Premium look & feel** – A refined GRP construction for durability and style.
- **Enhanced branding** – New shield-style branding plate replaces stickers, offering branding customisation
- **Easier servicing** – Redesigned top collar allows for easy, tool-free opening
- **Unmatched filtration** – Industry-leading continuous pass debris collection keeps systems running smoothly.

Upgrade to the **New Vortex 300**

Built to perform. Designed to last.

sentinel®

A hydronic flow
control
aallberts

Filters Magnetic Filter



Glow-worm

Code	Description	MPN
10128601	Glow-worm Power System Filter	10035820

Filters System Filter



Code	Description	MPN
10235201	Ideal System Filter	236531

Filters Domestic Filters



Code	Description	MPN
10663424	Mag One Duo Magnetic 28mm Filter Incl Reducers	VM01DUO

Filters System Filter



Code	Description	MPN
10654901	Keston 1.25in System Filter	355176
10654801	Keston 22mm System Filter	355175

Water Treatment

Filters Magnetic Filter



Code	Description	MPN
105395	Vaillant 22mm Filter Boiler Protection Kit	20278309
105396	Vaillant 28mm Filter Boiler Protection Kit	20278310
10540101	Vaillant Advance Boiler Protection Kit	10035819

Packs Filter & Chemical Pack



Code	Description	MPN
10758401	Worcester Greenstar Accessory Pack CDi Compact; SI & I	7733601214
10718901	Worcester Greenstar Connected System Care Pack	7733601377
10838001	Worcester Greenstar Comfort+ II RF System Pack	7733600401
10758201	Worcester Greenstar System Pack 1 Easy White RF	7733600433

Filters Magnetic Filter



Code	Description	MPN
107361	Worcester Greenstar System 22mm Filter	7733600236
107362	Worcester Greenstar System 28mm Filter	7733600237
10718601	Worcester Greenstar Brass System Filter 22mm	7733600476
10736301	Worcester Greenstar Mini System Filter 22mm	7733600266

Installation Accessories Filling Link



Code	Description	MPN
108459	Worcester Greenstar HE Keyless Filling Link	7716192610

Commercial
Circulating Pumps



Code	Description	MPN
115224	UPS2 25-80 Light Commercial Pump	98707848
115225	UPS2 32-180 Light Commercial Pump	98707851

Domestic
Boiler Condensate Pumps



Code	Description	MPN
115840	Conlift1	97936173
115843	Conlift1 LS	98452219

Circulating Pumps



Code	Description	MPN
11585001	Grundfos Alpha2 GO 25-75 130 220-240V 9H GGO	93074268
11585101	Grundfos Alpha2 GO 25-40 130 220-240V 9H GDO	93074270

Hot Water Service Pumps



Code	Description	MPN
115089	Comfort Pump UP15-14 B PM	99164484
115088	Comfort Pump UP15-14 BA PM	99164487
115103	UPS15-50N Secondary Hot Water Circulator	97549426

Water Boosting



Code	Description	MPN
115830	Home Booster 3.0 BAR	MD300200
115831	Home Booster 4.5 Bar	MD450200
11584801	Scala 2 Water Pressure Booster	93013254
115219	UPA 15-90N 230V 50Hz Water Pressure Booster Pump	99539153

Circulating Pumps



Code	Description	MPN
11584901	Grundfos UPS4 GO 25-65 130 220-240V	93074168



NEW

Introducing the **GO** range: always the right pump on the shelf

Grundfos are excited to introduce the new GO range - our most streamlined circulator solution yet, designed with your branch operations in mind.

Less stock, more certainty

Reduce shelf space and inventory complexity while still meeting a wide range of installer needs

Always the right product

With broad compatibility across legacy and modern systems, your customers are more likely to find the right fit the first time.

This range isn't just a product update

It's a smarter way to serve your customers while simplifying your operations.

ORDER TODAY

GRUNDFOS 

Possibility in every drop

Boiler Condensate Pumps

Circulating Pumps



Code	Description	MPN
135431	110mmx300mm Condensate Soakaway Container	PRO-SOAK 135431
135430	Propump Boiler Condensate Pump Automatic	PRO-PUMP
135434	Propump Reinforced Vinyl Tube 3/8"x30 metre Coil	RVT-3/8

Code	Description
71005106	Plus Central Heating Pump 6m
71005006	Classic Central Heating Pump 6m



Circulating Pumps



Code	Description	MPN
137055	Yonos Maxo 25/0.5-7	2120639

Circulating Pumps



Code	Description	MPN
137083	Yonos Pico 25/1-5-130-(ROW)	4215522
137085	Yonos Pico 25/1-6-130-(ROW)	4215516
137086	Yonos Pico 25/1-8-(ROW)	4215517

TRVs Angled



Code	Description	MPN
121266	8/10/15mm RAS-D2 Angled All Chrome c/w L/S	013G601600
121264	8/10/15mm RAS-D2 Angled TRV All Chrome	013G601200
121262	8/10/15mm RAS-D2 Angled White/Chrome C/W Lockshield	013G601700
121260	8/10/15mm RAS-D2 TRV Angled Chrome	013G601300
121244	Bi-Directional RAS-C2 TRV Angle and LS 15mm	013G600500
121242	Bi-Directional RAS-C2 TRV Angle 15mm	013G605000
121245	Bi-Directional RAS-C2 TRV Angle+LS 8/10mm	013G600600
121243	Bi-Directional RAS-C2 TRV Angle 8/10mm	013G605500
121246	RAS-C2 TRV 15mm C/W 10mm Push Fit Elbow	013G606000
12145601	RAS-B2 Dynamic Radiator Pack 10mm	013G7663
12145301	RAS-C2 Radiator Pack 8mm Angle	013G6008

Straight



Code	Description	MPN
121267	8/10/15mm RAS-D2 Straight All Chrome c/w L/S	013G601800
121263	8/10/15mm RAS-D2 Straight White/Chrome C/W Lockshield	013G601900
121443	RAS-C2 15mm Straight Combi	013G605100
121280	Ras-C2 15mm Straight Pack	013G600300

Controls Wired



Code	Description	MPN
11808801	FP720 V2 Two Channel Programmer 230V	087N7885
11807001	RET 1001M Dial Setting Room Thermostat 230V	087N6461
11808301	RET2001M V2 Digital Room Thermostat 230V	087N6476
118461	TPOne-M Mains Powered Programmable Room Thermostat	087N785200
11808701	TS710 V2 Single Channel Timer 230V	087N7884
118282	RMT230 Room Thermostat	087N110000

Wireless



Code	Description	MPN
11807101	RET 2001B Digital Room Thermostat Battery Powered	087N6471
11847801	TP5001 RF + RX1-S Version 2	087N7936
11807601	TP5001B Programmable Room Thermostat Battery Powered	087N931
11808501	TP5001M V2 Programmable Room Thermostat 230V	087N7935

Motorised Valves 2 Port



Code	Description	MPN
118261	HP22 22mm 2-Port Valve c/w HPA2 Actuator	087N660900
118262	HP28 28mm 2 Port Valve C/W HPA2 Actuator	087N661100

3 Port



Code	Description	MPN
121441	HS3 3-Port Valve & Actuator	087N661300
118255	HSA3 3-Port Mid Pos Actuator Only	087N658700

Acuator



Code	Description	MPN
118258	HPA2 Actuator Only	087N657900

TRVs Angled



Code	Description	MPN
12016501	RT212 TRV With 15mm Angle Valve	42225
12016401	RT212 TRV With 10mm Angle Valve	40399
12017201	RT212 TRV 15mm Ang Vlv DOTP Lockshield & 10mm Push-Fit Elbows	08 09 0268
12016901	RT212 TRV With 15/10/8mm Angle Valve And Lockshield	08 09 0261
12017001	RT212 TRV With 15mm Ang Vlv Lockshield & 10mm Push-Fit Elbows	08 09 0263
12017101	RT212 TRV With 15mm Angle Valve And DOTP Lockshield	08 09 0264
12016801	RT212 TRV With 15mm Angle Valve And Lockshield	08 09 0260
12016301	RT212 TRV With 8mm Angle Valve	39669

Angled



Code	Description	MPN
12001801	15mm Angle TRV4 Valve Body	07 15 0180
12018301	Chrome TRV4 15mm Angled With Lockshield	07 05 0174
120150CP	TRV4 15 mm Angle Body+Head Chrome	07 05 150C
12018001	TRV4 15mm Angle Valve & LS Anthracite With Chrome Cap	07 05 0210
120055	TRV4 Angled 15mm C/W Head White	42192
120026	TRV4 Angle 15 mm + 2M Remote Sensing Head	07 05 0158
120029	TRV4 & 15mm Angle + L/Shield	07 05 0180
120015	TRV4 Thermostatic Radiator Valve & Integral Head Angle 10mm	07 05 0152
120013	TRV4 TRV Integral Head Angle 15mm	07 05 0150
12001701	TRV4 White With 15mm Angled Valve & Lockshield	07 07 0260

Thermostats Smart



Code	Description	MPN
120061	Wiser Room Thermostat	WN704R0S0902
123052	Wiser Thermostat Kit	WT714R9K0902
120064	Wiser Thermostat Kit 2	WT724R9K0902
120066	Wiser Thermostat Kit 3	WT734R9K0902
120063	Wiser Heat HubR Two Channel	WT724R1S0902

Straight



Code	Description	MPN
12018401	Chrome TRV4 15mm Straight With Lockshield	07 05 0175
12018101	TRV4 15mm Straight Valve & LS Anthracite With Chrome Cap	07 05 0211
120030	TRV4 Straight Thermostatic Radiator Valve 15mm Chrome Boxed	07 05 0181
120054	TRV4 Straight 15mm C/W Head White	07 07 0115
120014	TRV4 Therm Rad Valve+ Integ Head Straight 15mm	07 05 0151

Heating Control Accessories Wiring Centre



Code	Description	MPN
123101	Wiring Centre LWC1	28001

Motorised Valves



Code	Description	MPN
123001	22mm 2 Port Valve and Actuator	27100
123004	Motorised Valve 2 Portx28	27205
123003	22mm Mid-Position Valve and Actuator	27101

Smart TRVs Head



Code	Description	MPN
12016601	RT212 With 15mm Straight Valve	08 09 0115

Code	Description	MPN
123057	Wiser Radiator	WV704R0A0902

Wired



Code	Description	MPN
123034	Digistat + Room Stat	30002
12018601	Digistat Mains 16A Relay With OT	2290M
123012	Electronic Room Stat RTS1 SPST Contacts	24001
123014	ACL Frost Thermostat RTS3 SPST	24003
123025	ACL Pipe/Frost Thermostat PTS	03 01 0260
123015	ACL Room Thermostat RTS4 SPDT Volt Free Contacts	24004
123023	Drayton Cylinder Thermostat HTS3	13007

Control Packs Smart



Code	Description	MPN
123055	Wiser Multi-Zone Kit	WV714R9K0902

THE DRAYTON TRV4.

INSPIRING POOR IMITATIONS

SINCE 1992.

VISIT

**THE WEBSITE
TO ORDER**

PLEASE SCAN



75 YEARS OF PIONEERING DESIGN.

Drayton

by Schneider Electric

Wireless



Code	Description	MPN
12018501	Digistat Battery 3A Relay	2290B
12018801	Digistat Dual-Channel RF	RF902
12309201	Digistat Plus Wireless R/Stat	RF710N
12018701	Digistat Single-Channel RF With OT	RF901
12018201	Digistat+CRF Wireless Cylinder Thermostat	13616
12309001	Digistat+RF And Single Channel Receiver	RF601N
123044	LP10RF Programmer & Digistat+2RF	RF560DR
123043	LP20 Dual Channel Programmer	25039DR
123045	LP10RF Prgammer & Digistat +3RF	RF561DR
123046	LP20RF Dual Chnl Prgmr&Digi+RF	RF562DR

Programmer Wired



Code	Description	MPN
123080	LP12 Mk4 24 Hour Programmer	25473
123081	LP241 Mk4	25474
123070	LP522 Programmer MK4	25475
123071	LP722 Programmer MK4	25476

Timer Wired



Code	Description	MPN
123072	LP111 Timeswitch MK4	25477
123073	LP711 Timeswitch MK4	25478

Heating Controls



Thermostats Smart



Code	Description	MPN
12239401	Thermostat Combi & Multizone Without Hub (OpenTherm)	852109
12239201	Thermostat Combi With Hub V4 (OpenTherm)	852108
12228701	Thermostat For Heating & Hot Water Control (Heating Only Boilers) w/o Hub	851812
12239001	Thermostat Heating and Hot Water With Hub V4	852112

Smart



Code	Description	MPN
12238901	Thermostat Mini Heating and Hot Water (Hubless)	852034
12239301	Thermostat Mini Combi & Multizone Without Hub (OpenTherm)	852111
12239101	Thermostat Mini Combi With Hub V4 (OpenTherm)	852110
12239501	Thermostat Mini Heating and Hot Water With Hub V4	852113

Hubs



Code	Description	MPN
12239701	Hub v3	851987

Heating Control Accessories Stand



Code	Description	MPN
12235601	Stand	852059

Smart TRVs Head



Code	Description	MPN
12236001	Smart TRV Head - White	UK7004240
12236101	Smart TRV Head And Body - White	UK7004561



The next generation of smart heating is here

Save on energy bills with Hive heating

Our award-winning thermostats work with your existing boiler and heating system to control your home like never before – and could cut your energy bills by up to £175 a year¹ by never heating an empty home.



Hive Thermostat

Simple to use and compatible with most boilers, the award-winning Hive Thermostat provides total control of your heating.

Hive Thermostat Mini

Smaller, sleeker, and cheaper, Hive Thermostat Mini is the new generation of smart heating – spend less, save just as much.

Compare our thermostat models	Hive Thermostat Mini	Hive Thermostat
Manage your heating and hot water using the Hive app	✓	✓
Control up to 6 heating zones	✓	✓
Frost protection protects your pipes from freezing in winter	✓	✓
Geolocation reminds you to switch off the heating if you've gone out	✓	✓
Works with Alexa, Google Assistant, Apple HomeKit and Siri	✓	✓
Boost Heating function available	✓	✓
View and edit Schedules	✓ (via app only)	✓
Child Lock feature available on the thermostat	✗	✓

1. Saving of £174.82 based on the Ofgem medium annual gas consumption of 11,500 kWh at the July 2025 UK average unit price of 6.334 pence per kWh including VAT. Emissions saved per year: 508 kg CO₂ (0.184kg per kWh). Actual savings will vary depending on individual circumstances.

HIVE

Build your perfect smart heating system



Hive Hub

Connects your Hive devices together over Wi-Fi (3rd generation) or ethernet (earlier models).



Hive Receiver

This comes with your thermostat and links your boiler to your thermostat and Hub, for control with the Hive app. Supports OpenTherm for compatible Combi boilers.



Hive Thermostat Stand

Keep your thermostat or Thermostat Mini securely in place, in any part of your house, with our stylish thermostat stand.



Hive Radiator Valves

Add Hive Radiator Valves to control the temperature room-by-room so you don't waste money heating empty spaces.

Hive App

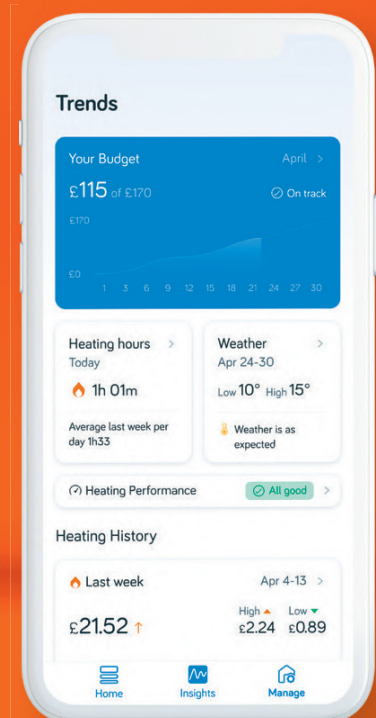
Control your smart home heating wherever you are with the Hive app. Boost the temperature, set schedules and get instant alerts if you've gone out and left the heating on. It'll even protect against costly frozen pipes in winter – and continue to save energy while you're on holiday too.

Hive Plus

Get even more from your Hive Thermostat with Hive Plus membership. Enjoy access to our most advanced money-saving tools, plus exclusive offers and tariffs.

Hive Installer Club

Get rewarded for installing Hive eco-tech with our dedicated Installer app, making installations quicker, easier and more rewarding. Join today at hivehome.com/installers



Thermostats Remote



Code	Description	MPN
117020	T4 Wired 5/2 Day Programmable Thermostat	T4H110A1021
11712201	DT4 Room Thermostat Wired On/Off White	DT40WT20

Thermostats Wireless



Code	Description	MPN
117281	Evohome Wi-Fi Conn Thermostat Pack	ATP921R3100
117091	Sundial RF2 Pack 1	Y9120H2009
117197	Sundial RF2 2 Channel Htg Pack	Y9420H1008
117092	Sundial RF2 Pack 3	Y9420S2005
117021	T4R Wireless 5/2 Day Programmable Thermostat	Y4H910RF4003
11712301	DT4R Room Thermostat Wireless On/Off White	YT42WRFT20
11712401	DT4R Room Thermostat Wireless Spare Stat Only	DTS42WRFT20
11731101	T3R Wireless Thermostat	Y3H710RFO053

Vents



Code	Description	MPN
117095	Automatic Air Vent	EA122-AB
117302	Diff Bypass Valve 22 mm	DU145-3/4B
117350	DU144 22mm Straight Auto Bypass Valve	DU144A1001

Heating Control Accessories



Code	Description	MPN
117090	10 Way Junction Box	42002116-002
117051	Actuator Only For V4043H	40003916-001/U
117053	Actuator Only For V4073A	40003916-003/U
117089	Sundial Wiring Centre	42005748 001

Programmer Smart



Code	Description	MPN
11706701	T6R Smart Thermostat - Wall Mount	Y6H920RW5031
117076	T6R-Hot Water Wireless Smart Hot Water Control	Y6H920RW4026

TRVs Angled



Code	Description	MPN
117211	VT15-EG TRV 15mm	VT15EG
117412	Valencia VT117 TRV 15mm Angled	VT117-15A
117418	Valencia VTL120 TRV+LS 15mm Angled	VTL120-15A
11744701	Valencia VTL115 TRV+LS 15mm Angled	VTL15-15A

CO Alarms Battery Operated



Code	Description	MPN
11718501	Cortez CO Stand Alone	R200C-1

Motorised Valves



Code	Description	MPN
117027	Zone Valve 22mm	V4043H1056/U
117029	Zone Valve 28mm	V4043H1106/U
117032	Mid-Position Valve 22 mm	V4073A1039/U
117033	Mid-Position Valve 28 mm	V4073A1088/U
117031	Diverter Valve 22 mm	V4044C1288/U
117026	Diverter Valve 28 mm	V4044C1569/U
117039	22mm Spring Open 2 Port Zone Valve	V4043b1257/U
117038	28mm Spring Open 2 Port Zone Valve	V4043B1265/U
11721801	2 Port Zone Valve 22mm Twin Pack	V4043H1056/TW

Thermostats Wired



Code	Description	MPN
117225	7 Day 2 Channel Programmer	ST9400C1000
117222	7 Day Timer	ST9100C1006
117005	Frostat	T4360A1009
117003	Pipe Thermostat High Limit	L641B1012
117001	Pipe Thermostat Low Limit	L641B1004
117008	Room Thermostat	T6360B1028
11731001	T3 Wired Thermostat	T3H110A0066
117014	Room Stat and Indicator Lamp	T6360B1036
117045	Tamper Proof Room Stat	T6360B1069

Smart TRVs Pack



Code	Description	MPN
117274	Evohome Rad Multi Zone Kit	HR924UK
11727501	Evohome Essentials	ATP926G3001
117120	HR914 Wireless Rad Controller 4 Pack	HR914
11712101	Single HR91 Wireless TRV Head Without Screen	HR91

Cylinder Controls Thermostat



Code	Description	MPN
117000	Cylinder Thermostat	L641A1039

Smart Home Accessories



Code	Description	MPN
117271	Evohome Hot Water Kit	ATF500DHW

Honeywell Home



SIMPLY RELIABLE

There's now a **5 year warranty*** on our most popular Honeywell Home heating controls and Resideo Braukmann water products.

Giving you and your customers peace of mind for years to come.



Find a list of our eligible products at resideo.com/warranty

**Terms and conditions apply*

© 2025 Resideo Technologies, Inc. All rights reserved.
The Honeywell Home trademark is used under license from Honeywell International Inc.
This product is manufactured by Resideo Technologies, Inc. and its affiliates.

resideo

Lever Ball Valves
Butterfly Handle



Code	Description	MPN
70062602	Inta Full Bore Ball Valve 15mm Blue Butterfly Handle	BBV209315B
70062605	Inta Full Bore Ball Valve 15mm Red Butterfly Handle	BBV209315R

Automatic By-Pass Valves



Code	Description	MPN
70065613	Inta Automatic differential by-pass valve straight 22mm	ABPS402022
70065605	Inta Automatic differential by-pass valve angled 22mm	ABPA401022

Intamix Thermostatic
Mixing Valves



Code	Description	MPN
70065253	Intamix Thermostatic Mixing Valve 15mm TMV2/3	40015CP
81000022	Intamix Thermostatic Mixing Valve 22mm TMV2/3	40022CP

Pressure Reducing Valves



Code	Description	MPN
70062001	Inta 1/2" pressure reducing valve with gauge	PRV22330500G.1
70062012	Inta 15mm pressure reducing valve with gauge	PRV22331510.1
70062015	Inta 22mm pressure reducing valve with gauge	PRV22332210.1
70062004	Inta 3/4" pressure reducing valve with gauge	PRV22330750G.1
70065325	Trade-Tec 22mm Pressure Reducing Valve with 15mm Reducers & Gauge	PRVG22
70062020	Inta 15mm Pressure Reducing Valve - No Gauge	PRV22331500.1

Air Vents
Automatic



Code	Description	MPN
70062207	Inta 15mm Auto Air Vent	AAV07911500B
70062202	Inta 3/8" Automatic Air Vent with quick release isolation valve	AAV079103850B

Safety Valves



Code	Description	MPN
70062050	Inta 1/2" F x F 3 Bar Safety Relief Valve with Gauge	SRVG35305003
70062064	Inta 3/4" F x F 3 Bar Safety Relief Valve with Gauge	SRVG35307503
70062057	Inta 1/2" F x F 6 Bar Safety Relief Valve with Gauge	SRV035105006
70065595	Inta Safety Relief Valve 3 bar 1/2" FxF - No Gauge	SRV035105003

Anti-Freeze Valve
Renewables



Code	Description	MPN
81099040	Inta 28mm Zero Anti-Freeze Valve	ZERO28

Radiator valves & accessories



Code	Description	MPN
70062409	I-THERM 15mm Angled TRV	15TRVA
70062405	I-THERM 10/8mm Angled TRV	108TRVA
70062317	Inta 15mm Drain Off Tail Piece	15DOT
70062411	Inta Pushfit Stem Elbow 15 x 10mm (Pair)	1510PFE

Controls Wired



Wireless



Motorised Valves 2 Port



Code	Description	MPN
12223701	Wired 7 Day Prog Dig Room Thermostat Opentherm	RTE7OTA
122220	Wired 7 Day Prog Thermostat Boiler Plus	RT7plus
122200	Wired 7 Day Single Channel Timer	TMR7
122201	Wired 7 Day Twin Channel Programmer	PRG7
122212	Wired Analogue Room Thermostat	RTA
122202	Wired Digital Room Thermostat	RTO
122232	Wired Mechanical Volt Free Room Thermostat	RTM

Code	Description	MPN
122216	7 Day Programmer C/W Radio Frequency Room Thermostat	PRG7-RF
122234BK	Programmable Wireless Connected Black Room Thermostat	ERTRFBA
122222	Wireless 7 Day Prog Thermostat Boiler Plus	RT7RFplus
122223	Wireless 7 Day Prog Thermostat Black Boiler Plus	RT7RFBplus
122205	Wireless Digital Room Thermostat	RTORF

Code	Description	MPN
12222701	MTVH2a Replacement Head For 2 Port Valve 22 or 28mm Comp	MTVH2A
122218	2 Port 22mm Zone Valve	MTV222
122219	2 Port 28mm Zone Valve	MTV228

3 Port



Code	Description	MPN
122217	3 Port 22mm Mid Position Valve	MTV322
12222801	MTVH3a Replacement Head For 3 Port Valve 22 or 28mm Comp	MTVH3A

Controls Thermostat



Code	Description	MPN
122215	Cylinder Thermostat	CTH

Manual Radiator Valves Angled



Angled



Code	Description	MPN
70055716	Pegler Belmont 97LS angle radiator valve 1/2"	680008cwo01123R0
70055707	Pegler Belmont 97WH angle radiator valve 1/2"	680007 cwo01123R

Code	Description	MPN
70055668	Terrier 3 angle TRV white 15mm	631801
70055430	Pegler Terrier 369LS chrome angle radiator valve 1/2" FxF	603038
70055415	Pegler Terrier 367LS chrome angle radiator valve 15mm	601038 cwo01123r

TRVs Angled



Radiator Valves and TRV Accessories Extension



Code	Description	MPN
70055676	Mistral II 15 x 1/2 Angled TRV	42250
70055677	Mistral II 15 x 1/2 Angled TRV & LS	42252

Code	Description	MPN
70055322	Pegler 40mm CP radiator valve ext piece	634006

Manual Radiator Valves



Code	Description	MPN
10040528	OPTIMA TT all chrome traditional angle towel warmer valve 15mm	OPTIMATTA15
10040494	OPTIMA CC all chrome contemporary angle towel warmer valve 15mm	OPTIMACCA15
10040511	OPTIMA CC all chrome contemporary straight towel warmer valve 15mm	OPTIMACCS15

Cylinder Accessories



Code	Description	MPN
70065677	Expansion Vessel L/S Service Valve	EVSV
10099600	Water Shock Arrestor 1/2" 0.16L	SHOCK016

Valves T-Bar



Code	Description	MPN
55090063	T-Bar Hanging Kit	T-BARKIT

Air Vents Automatic



Code	Description	MPN
10099087	Automatic Air Vent 15mm	AAV15
10099085	Automatic Air Vent with Check Valve 1/2"	AAVCV12

Draw-Off Cocks T-Doc



Code	Description	MPN
40060584	(1 = PK 5) T - Doc Long Tail 15mm DOC	TDOCL
40060583	(1 = PK 5) T - Doc Standard 15mm DOC	TDOCS

Valves Anti Freeze



Code	Description	MPN
50010354	Tesla Anti Freeze Valve 28mm	AFV28
50010355	Tesla Anti Freeze Valve 1 1/4"	AFV114

Tundish Open



Code	Description	MPN
67045104	Straight Tundish Open 15mm x 22mm Compression	STUN1522

Tundishes Dry Trap



Code	Description	MPN
67045100	TESLATUN 15x22mm Dry Trap Tundish	DTUN1522
67045103	TESLATUN 15x32mm Dry Trap Tundish	DTUN1532

Valves
Thermocouple



Code	Description	MPN
70066140	Thermocouple - gas fire	T67-900/GFU
70066168	Thermocouple - style	T50-900
70066126	Thermocouple - super	T140-900
70066112	Thermocouple - universal 900mm for natural gas	T20-900

Motorised Valves
2 Port



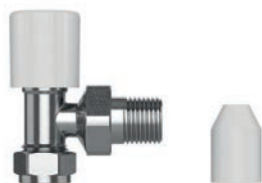
Code	Description
11732214	2 Port Valve Actuator
11732210	22mm 2 Port Motorised Valve
11732211	28mm 2 Port Motorised Valve

TRV
Angled



Code	Description
10080100	Classic Angled Thermostatic Radiator Valve 15mm
10080103	Classic Angled Thermostatic Radiator Valve 8/10/15mm
10080105	Classic Angled Thermostatic Radiator Valve with Lockshield 15mm

MRV
Angled



Code	Description
10090000	Classic Angled Manual Radiator Valve 15mm
10090003	Classic Angled Manual Radiator Valve 8/10mm

Valves
Pressure Reducing



Code	Description
135521	Classic 22mm PRV c/w Gauge & 22-15 Reducers

3 Port



Code	Description
11732212	22mm Mid Position Motorised Valve
11732213	28mm Mid Position Motorised Valve
11732215	Mid Position Valve Actuator

Straight



Code	Description
10080107	Classic Straight Thermostatic Radiator Valve 15mm
10080109	Classic Straight Thermostatic Radiator Valve 8/10/15mm
10080111	Classic Straight Thermostatic Radiator Valve with Lockshield 15mm

Straight



Code	Description
10090005	Classic Straight Manual Radiator Valve 15mm
10090007	Classic Straight Manual Radiator Valve 8/10mm

Lockshield



Code	Description
10091000	Classic spare head lockshield

Filling Loops
Filling Loop



Code	Description
135202	G24 WRAS Approved Filling Loop

Shower Accessories
Mixing Valve



Code	Description	MPN
70065142	22mm Merchant Mixing Valve TMV2/3	CA-100824

Head



Code	Description
10080113	Classic Thermostatic Radiator Valve Head M30x1.5

Angled



Code	Description
10090009	Classic Angled Manual Radiator Valve with Drain-off 15mm
10090011	Classic Angled Manual Radiator Valve with Drain-off 8/10mm

Valve Accessory
Extension



Code	Description
10091020	Classic Radiator Valve Extension 20mm
10091040	Classic Radiator Valve Extension 40mm
10091050	Classic Radiator Valve Extension 50mm

Angled



Code	Description
10080400	Plus Angled TRV 15mm - White & Chrome (Tulip Style)
10080403	Plus Angled TRV 8/10/15mm - Chrome & White (Tulip Style)
10080405	Plus Angled TRV + Lockshield 15mm - White & Chrome (Tulip Style)

Straight



Code	Description
10080407	Plus Straight TRV 8/10/15mm - White & Chrome (Tulip Style)
10080409	Plus Straight TRV + Lockshield 15mm - Chrome & White (Tulip Style)

Head



Code	Description
10080411	Plus TRV Head M30 x 1.5 - White & Chrome (Tulip Style)

Angled



Code	Description
10080300	Plus Angled TRV 15mm - Anthracite & Chrome
10080303	Plus Angled TRV 8/10/15mm - Anthracite & Chrome
10080305	Plus Angled TRV with Lockshield 15mm - Anthracite & Chrome

Straight



Code	Description
10080307	Plus Straight TRV 8/10/15mm - Anthracite & Chrome
10080309	Plus Straight TRV with Lockshield 15mm - Anthracite & Chrome

Head



Code	Description
10080311	Plus TRV Head M30 x 1.5 - Anthracite & Chrome

Angled



Code	Description
10080500	Plus Angled TRV 15mm - All Black
10080503	Plus Angled TRV 8/10/15mm - All Black
10080505	Plus Angled TRV with Lockshield 15mm - All Black

Straight



Code	Description
10080507	Plus Straight TRV 8/10/15mm - All Black
10080509	Plus Straight TRV with Lockshield 15mm - All Black

Head



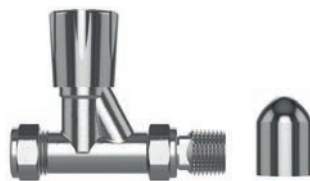
Code	Description
10080511	Plus TRV Head M30 x 1.5 - All Black

**MRV
Angled**



Code	Description
10090013	Plus Angled Manual Radiator Valve 15mm
10090015	Plus Angled Manual Radiator Valve 8/10mm

Straight



Code	Description
10090017	Plus Straight Manual Radiator Valve 15mm

Angled



Code	Description
10090019	Plus Chrome Radiator Valve Angled Pair Round Handwheel
10090021	Plus Chrome Radiator Valve Straight Pair Round Handwheel

Angled



Code	Description
10090023	Plus White Radiator Valve Angled Pair Round Handwheel

Straight



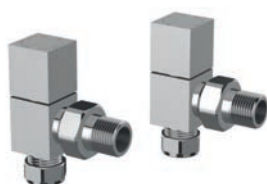
Code	Description
10090025	Plus White Radiator Valve Straight Pair Round Handwheel

Angled



Code	Description
10090031	Plus Traditional Towel Radiator Valve Angled Pair
10090033	Plus Traditional Towel Radiator Valve Straight Pair

Angled



Code	Description
10090035	Plus Chrome Radiator Valve Angled Pair Square Handwheel
10090037	Plus Chrome Radiator Valve Straight Pair Square Handwheel

Angled



Code	Description
10090027	Plus Dual Fuel Corner Radiator Valve Angled
10090029	Plus Corner Radiator Valve Angled

Angled



Code	Description
10090039	Plus White Radiator Valve Angled Pair Square Handwheel
10090041	Plus White Radiator Valve Straight Pair Square Handwheel

Controls Mechanical

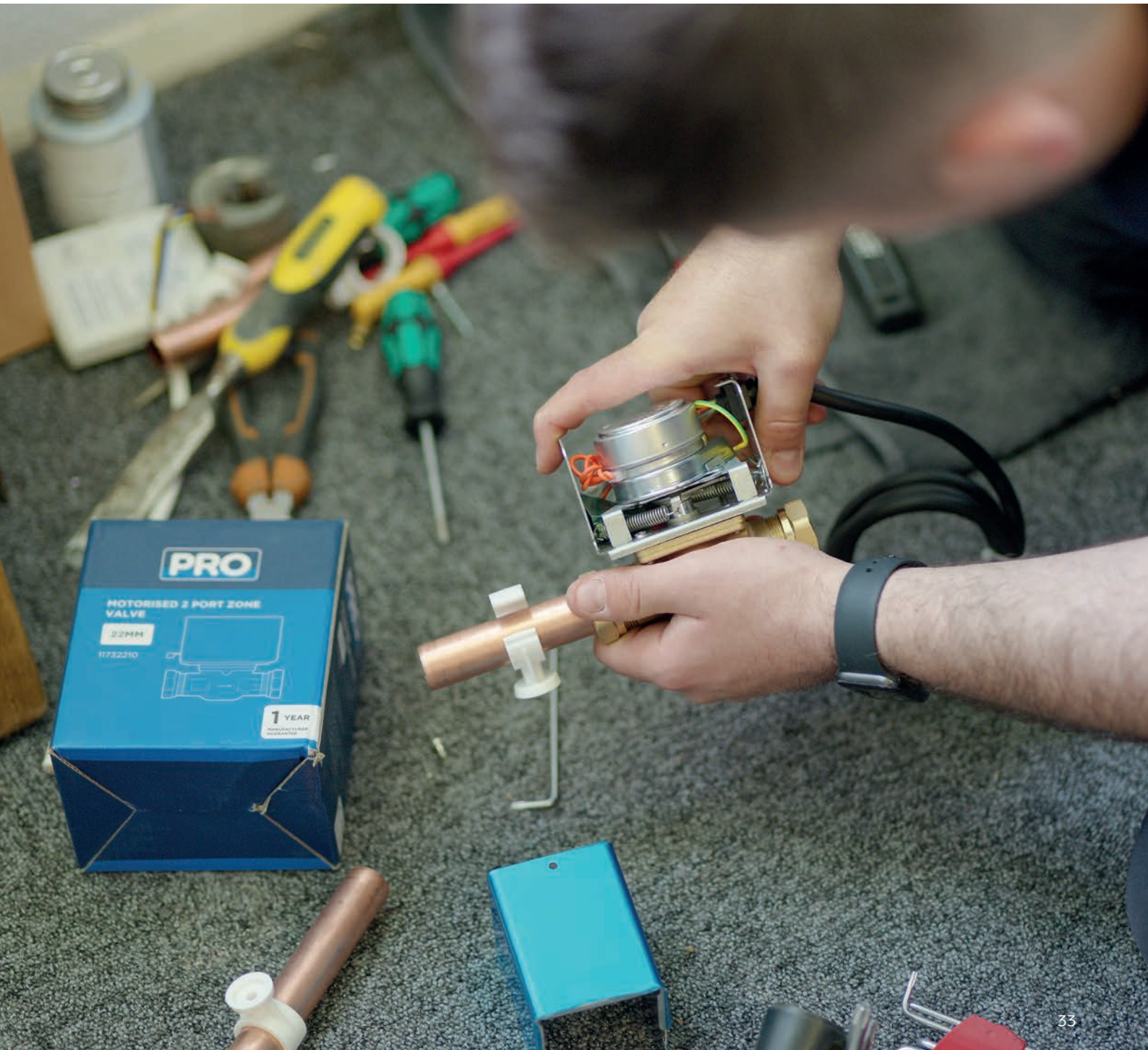


Code	Description
11732216	Room Thermostat With Neon

Programmable



Code	Description
11732217	Wireless RF Thermostat
11732218	Wired Digital Thermostat
11732219	2 Channel Programmer



Thermostats Smart



BAXI

Code	Description	MPN
10395001	Baxi uSense 2 Smart Room Thermostat	7775937

Programmer Wireless



Glow-worm

Code	Description	MPN
101766	Glowworm Climapro2 Radio Frequency Programmer Without Receiver	20085220
101862	Glowworm Climapro2 RF	20085221

Timer Wired



Glow-worm

Code	Description	MPN
10124100	GlowWorm MicroCom Analogue Timer Kit UK	10031994
101290	Glowworm Universal Analogue Timer	20193661

Thermostats Remote



GRANT

Code	Description	MPN
10663379	Grant AERONA R32 Remote Controller Kit(HPID10R32)	HPIDR32CON10
10663380	Grant AERONA R32 Remote Controller Kit(HPID13R32 & HPID17R32)	HPIDR32CON1317
10663378	Grant AERONA R32 Remote Controller Kit(HPID6R32)	HPIDR32CON6

Thermostats Wired

GRANT

Code	Description	MPN
10663356	Grant GSX1 Controller	GS222765
10663343	Grant SD3X Controller (for east/west systems)	GS222020X

Thermostats Smart



GRANT

Code	Description	MPN
10663425	Grant AERONA 290 Smart Controller Kit	HP290SMART
10663383	Grant AERONA R32 Smart Controller Kit(HPID13R32 & HPID17R32)	HPIDR32SMART1317
10663381	Grant AERONA R32 Smart Controller Kit(HPID6R32)	HPIDR32SMART6
10663393	Grant Smart Wired Thermostat	HPIDSMARTHRT
10663390	Grant Smart Wireless Thermostat	HPIDSMARTWRT
10663392	Grant Smart Wireless Thermostat (c/w Receiver)	HPIDSMARTWRTR

Thermostats Wired

GRANT

Code	Description	MPN
106781	Grant Indoor Combi 24hr Mech Timer	MTKIT

Heating Controls

Cylinder Controls Remote



Code	Description	MPN
10284101	Ideal HP290 Control Box(Wall Mounted)	239386

Thermostats Remote



Code	Description	MPN
10285116	Ideal Navilink A59 INTER	AH074232

Thermostats Smart



Code	Description	MPN
10285188	Ideal Halo Air 1-Zone	234819
10285190	Ideal Halo Air Wi-Fi 1-Zone	234790
10285191	Ideal Halo Air Wi-Fi 2-Zone	234792
10239201	Ideal Halo Combi 2-zone Central Heating Upgrade Kit	222144
10234601	Ideal Halo Combi Wi-Fi	222142
10221001	Ideal Halo Heat & System W-Fi	222143

Thermostats Smart



Code	Description	MPN
10234701	Ideal Halo Combi RF	222140
10220901	Ideal Halo Heat & System RF	222141
10235101	Ideal Halo Lite RF	237423
10251101	Ideal Halo Spare Smart Interface Bracket	227156
102910	Ideal Logic/Vogue2 RF Electronic Programmable Room Thermostat	216131

Timer Wired



Code	Description	MPN
102390	Ideal Logic Mechanical Timer *	204839

Thermostats Wired

Code	Description	MPN
11237401	Ideal Halo Lite Open Therm Wired Combi	221528
102911	Ideal Integral Mechanical Clock for Logic GEN1 and Vogue GEN2	215390

Timer Wired

Code	Description	MPN
10658901	Keston Heat 2 Opentherm 2 Channel Programmer	355135

Timer Wired



Code	Description	MPN
116001	Potterton EP2 2Day/5Day or 7 Day Twin Channel Timer	7211473

Programmer Wired



Code	Description	MPN
105480	Vaillant Digi Programmer (2 Channel) timeswitch	0020124498

Wired



Code	Description	MPN
105478	Vaillant Programmable Room Thermostat VRT 350	0020124475
10546101	Vaillant sensoCOMFORT VRC 720	0010036819
105041	Vaillant VR91 Control	0020171334
105017	Vaillant VRT15 Basic Room Thermostat 230V	306777
105034	Vaillant Wired VRC 700	0020236291

Wireless



Code	Description	MPN
10087001	myVAillant connect VR940f and sensoROOM VRT51f	0010038369
10546801	Vaillant sensoCOMFORT VRC 720f	0010036820
10086901	Vaillant VR 940f / myVAillant Connect	0010037346
105451	Vaillant VRT350f Programmable Room Thermostat	0020124482
10547401	Vaillant VRT380f ES	0020260961
105014	Vaillant VRT50 Digital Room Thermostat	0010038663

Thermostats Smart

Code	Description	MPN
10546201	Vaillant VR92 BE	0020260925
10546901	Vaillant VR92f BE	0020260940
10547301	Vaillant VRT380 ES	0020260951

Smart Sensors and Plugs

Code	Description	MPN
105486	Vaillant ambiSENSE VR52	0020253437

Control Accessories Wiring Centre



Code	Description	MPN
105481	Vaillant 2-Zone Wiring Centre VR66	0020135785
105450	Vaillant Multifunctional Module VR40	0020017744
105057	Vaillant VR 70 Wiring Centre	0020184844
105044	Vaillant VR71 5 Relay Output Wiring Centre	0020184847

Thermostats Wireless

Code	Description	MPN
10531401	Vaillant Room Thermostat (requires Wi-Fi Gateway)	0010035748
10531301	Vaillant VR 940f / myVAillant connect with VRA 42	0010038367
105030	Vaillant Wireless Controller VRC700F	0020259829

Gateway Wi-Fi

Code	Description	MPN
10547501	Vaillant VR921 Wall Hung	0020260963

Control Accessories Heating



Code	Description	MPN
10087101	myVAillant connect and sensoHOME RF	0010038370

Thermostats Wireless

Code	Description	MPN
105479	Vaillant Mechanical Time Clock timeswitch	0020116882
105151	Vaillant VRC 700/4 Weather Compensator & Time Control	0020184838

Cylinder Controls Control Kit

Code	Description	MPN
12440201	Heatrae Sadia Megafluo 400/500 Litre 6 Bar Cold Water Control kit	7038498

Heating Controls

Thermostats Wireless



Code	Description	MPN
112390	Viessmann Vitodens 100-W Vitotrol 100 UTA RF1	7454521
112389	Viessmann Vitodens 100-W Vitotrol 100 UTDB RF2	7537234

Thermostats Smart



Code	Description	MPN
11245701	Viessmann ViCare Thermostat (Modulating)	7377959

Thermostats Wireless



Code	Description	MPN
112628	Viessmann Vitodens Vitotrol 100 UTDB	Z007692
112627	Viessmann Vitodens Vitotrol 100 UTDB Programmable 7 Day Thermostat	Z007691
11239201	Viessmann Vitotrol 100-E Modulation Control	7968153

Control Packs Wired

Code	Description	MPN
11275642	Viessmann Vitotrol 200 Hardwired Control Unit	7510421

Cylinder Controls Control Kit

Code	Description	MPN
112721	Viessmann Cylinder Control Box System Boiler	7574319

Cylinder Controls Sensor

Code	Description	MPN
11241801	Viessmann 200-W System Boiler DWH Cylinder Temperature Sensor	ZK04671

Programmer Wired

Code	Description	MPN
112523	Viessmann Vitotrol 100 UTA Room Thermostat 24Hr Programmable	7170149

Thermostats Wired

Code	Description	MPN
112522	Viessmann Vitotrol 100 Room Thermostat	7141709

Timer Wired

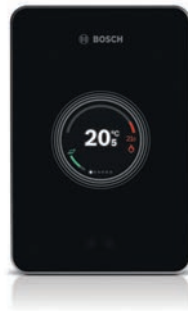
Code	Description	MPN
112401	Viessmann Vitodens 100-W Analogue Time Clock	7522678

Thermostats Remote



Code	Description	MPN
10771701	Worcester CR10H	7738112314

Thermostats Smart



Code	Description	MPN
10834301	Bosch 230V Smart Individual Room Thermostat	8750001003
10834401	Bosch 24V Smart Individual Room Thermostat	8750001004
107281	Worcester EasyControl CT 200 B	7736701392
107280	Worcester EasyControl CT 200 W	7736701341
10786701	Worcester RT800	7738112961
10729301	Worcester Smart Radiator Thermostat	7736701575

Thermostats Wired



Code	Description	MPN
10773501	Worcester CR11H Wired Control / Room Thermostat	7738112972
107359	Worcester Sense I Intelligent Wired Room Thermostat	7738110054

Thermostats Wireless



Code	Description	MPN
107287	Worcester Comfort I RF Digital Room T/stat Twin channel	7733600001
107288	Worcester Comfort II RF Twin Channel Pro T/Stat	7733600002
10717701	Worcester Comfort+ II RF W/less Programmable Room Thermostat & Receiver	7738112324
10717601	Worcester Comfort+ RF Wireless Room Thermostat & Timer	7738112323
10717501	Worcester Comfort+ Stat RF	7738112338
10786801	Worcester CR20RF	7738112943
10718701	Worcester MT20 RF Mechanical Thermostat	7733600333

Timer Wired



Code	Description	MPN
108340	Worcester Greenstar CDI/1/MT10 Single Mech timer	7716192036
10718501	Worcester MT20 Mechanical Timer	7733600332

Programmer Wired



Thermostats Wired



Code	Description	MPN
11732206	1 Channel Programmer	TTH1CT
11732207	2 Channel Programmer	TTH2CT

Code	Description	MPN
11732203	Mechanical thermostat	TTHMT
11732201	Wired digital thermostat	TTHWD
11732205	Wired programmable thermostat	TTHWP

Wireless



Motorised Valves



Code	Description	MPN
11732202	Wireless digital thermostat	TTHWFD
11732204	Wireless programmable thermostat	TTHWFP

Code	Description	MPN
11732208	22 2 port ZV	TTH22MZV
11732209	22 mid position ZV	TTH223MZV

ROOM THERMOSTATS

PROGRAMMABLE THERMOSTATS

- Wired and wireless models available
- With built in service reminder
- 4 time schedules per day
- Easy to install & programme



 **ON/OFF BOILER CONTROL**
 **INTELLIGENT HEATING CONTROLS**
 **BOILER PLUS**
 **3 YEAR WARRANTY**

DIGITAL ROOM THERMOSTAT

- Wired and wireless models available
- Large clear screen
- Shows set point and room temperature
- Timed set-back facility



 **ECO BUTTON FOR ENERGY SAVING**
 **INTELLIGENT HEATING CONTROLS**
 **HEATING OR COOLING CONTROL CAPABILITY**
 **3 YEAR WARRANTY**

MECHANICAL ROOM THERMOSTAT

- Uses heat anticipator for close temperature control
- 10 to 30°C set point range
- Easy to use



 **EASY INSTALLATION**
 **SIMPLE MANUAL CONTROL**
 **3 YEAR WARRANTY**

TIMERS

DIGITAL TIMER 7-DAY / 1-CHANNEL

- Large easy to read display
- Line of text display, providing text feedback
- Fits on industry standard back plate



 **ON/OFF BOILER CONTROL**
 **7-DAY/3-PERIODS PROGRAMMABLE**
 **HOLIDAY MODE**
 **3 YEAR WARRANTY**

DIGITAL TIMER 7-DAY / 2-CHANNEL

- Large easy to read display
- Line of text display, providing text feedback
- Fits on industry standard back plate



 **ON/OFF BOILER CONTROL**
 **HOT WATER CONTROL**
 **7-DAY/3-PERIODS PROGRAMMABLE**
 **HOLIDAY MODE**
 **3 YEAR WARRANTY**

VALVES

2 AND 3 PORT MOTORISED VALVES (22MM)

- Spring return action
- Two position operation
- Powerhead replaceable without draining down
- Manual lever for filling/draining down



 **3 YEAR WARRANTY**

PRODUCT CODE	DESCRIPTION
TTHWP	WIRED PROGRAMMABLE THERMOSTAT
TTHWFP	WIRELESS PROGRAMMABLE THERMOSTAT
TTHWD	WIRED DIGITAL ROOM THERMOSTAT
TTHWFD	WIRELESS DIGITAL ROOM THERMOSTAT
TTHMT	MECHANICAL ROOM THERMOSTAT
TTH222MZV	MOTORISED ZONE VALVE (22MM)
TTH223MMV	MID-POSITION MOTORISED VALVE (22MM)
TTH1CT	DIGITAL TIMER 7-DAY / 1-CHANNEL
TTH2CT	DIGITAL TIMER 7-DAY / 2-CHANNEL

Gauges



Code	Description	MPN
70065429	0-10 Bar 50mm Dial Pressure Gauge ¼" Bottom Entry	GP1536010
70065426	0-10 Bar 50mm Dial Pressure Gauge ¼" Back Entry	GP1576010
70065414	0-4 Bar 50mm Dial Pressure Gauge ¼" Back Entry	GP1576004
70065417	0-4 Bar 50mm Dial Pressure Gauge ¼" Bottom Entry	GP1536004
70065420	0-6 Bar 50mm Dial Pressure Gauge ¼" Back Entry	GP1576006
70065423	0-6 Bar 50mm Dial Pressure Gauge ¼" Bottom Entry	GP1536006
70065467	Pressure / temperature gauge 6 bar - bottom tapping	333006

Valves Pressure Reducing



Code	Description	MPN
70065101	Temperature & Pressure Relief Valve ½" M x 15mm 7 Bar	TP220105007
70065115	Temperature & Pressure Relief Valve ½" M x 15mm 10 Bar	TP220105010
70065012	Automatic filling valve with gauge gauge M x F	240200
70065507	3 bar pressure relief valve ½" F x F	207530
70065528	3 bar pressure relief valve ¾" F x F	217630

Valves Bypass



Code	Description	MPN
70065608	Differential by-pass valve 22mm	81004010-BIW

Water Meters



Code	Description	MPN
88010132	Water meter 1" class D (primary)	PD-SDC (E) Dn25
88010125	Water meter ½" class B (secondary)	SJ-SDC Dn15
88010134	Water meter ½" class C (secondary)	SJ-SDC PLUS Dn15
88010133	Water meter ½" class D (primary)	PD-SDC (E) Dn15
88010128	Water meter ¾" class B (secondary)	SJ-SDC Dn20
88010137	Water meter ¾" class C (secondary)	SJ-SDC PLUS Dn20

Air Separators Cold Feed



Code	Description	MPN
70065753	Tower air separator 22mm cold feed	AIR22CF
70065751	Tower air separator 22mm standard	AIR22
70065755	Tower air separator 28mm standard	AIR28

Heating Control Accessories Motor



Code	Description	MPN
71000651	Synchron motor 230V SM-1	URSM





Electric Water Heaters
Oversink

Electric Water Heaters
Oversink

Undersink



Code	Description	MPN
26112401	Aures Instantaneous Electric Water Heater	3195216



Code	Description	MPN
261021	Andris Lux 10L Oversink 3kW unvented electric water heater	3100302
261026	Andris Lux 15L Oversink 3kW unvented electric water heater	3100308
261030	Andris Lux 30L Oversink 3kW water heater (Must be sold with Kit A and B)	3100311



Code	Description	MPN
26110701	Andris Lux 6L Undersink 1.5kW unvented electric water heater	3626292
261020	Andris Lux 10L Undersink 2kW unvented electric water heater	3100306
261022	Andris Lux 10L Undersink 3kW unvented electric water heater	3100303
261025	Andris Lux 15L Undersink 2kW unvented electric water heater	3100310
261027	Andris Lux 15L Undersink 3kW unvented electric water heater	3100309

Storage Water Heaters



Code	Description	MPN
26111801	Pro1 Eco 100 & Medium Capacity Installation Kit	3820021
26111601	Pro1 Eco 50 & Medium Capacity Installation Kit	3820019
26111701	Pro1 Eco 80 & Medium Capacity Installation Kit	3820020



Code	Description	MPN
26105201	Velis Evo 45 1.5kW	3626305/3626270
26105001	Velis Evo 45 1.5kW + Installation Kit	3626305
26111301	Velis Evo Wi-Fi 45	3626273
26111901	Velis Evo Wi-Fi 45 & Medium Capacity Installation kit	3626307/3626273
26105301	Velis Evo 80 1.5kW	3626306/3626271
26105101	Velis Evo 80 1.5kW + Installation Kit	3626306
26111401	Velis Evo Wi-Fi 80	3626274
26112001	Velis Evo Wi-Fi 80 & Medium Capacity Installation Kit	3626308/3626274

Gas Water Heaters



Code	Description
26113001	Next Evo X 16 Litre Gas Water Heater & Flue



ANDRIS LUX
Electric Storage Water Heater
(6L, 10L, 15L and 30L)

- / Intuitive operation and compact build
- / Titanium enamelled tank and 4-bolt flange for robustness and durability
- / Installation in 10 easy steps

NEXT EVO X
Gas Instantaneous Water Heater
(16L NG)

- / Super energy efficient with 'A' class ErP rating across all models
- / Sleek, compact build for space saving
- / Energy saving ECO function

PRO 1 ECO
Electric Storage Water Heater
(50L, 80L & 100L)

- / Reduce energy bills by 14% with 'Eco Evo' function
- / Anti-legionella and ABS safety system
- / Patented WaterPlus technology allowing for up to 16% more hot water availability

THE UK'S NO.1 WATER HEATING BRAND

🏠 **Advanced Performance**

🏠 **Everlasting Quality**

🏠 **Hi-Tech Design**

🏠 **Smart Connectivity**

HOT WATER | HEATING | RENEWABLES | AIR CONDITIONING



ariston.com/en-uk/

Oversink



Code	Description	MPN
124975	FBM Eco 120 Litre	95040303

Oversink



Code	Description	MPN
124972	FBM Eco 25 Litre	95040300
124973	FBM Eco 45 Litre	95040301
124974	FBM Eco 70 Litre	95040302

Oversink



Code	Description	MPN
124426	Streamline 10 Litre 1kW Oversink Complete	95010285
124427	Streamline 10 Litre 3kW Oversink Complete	95010287
124424	Streamline 7 Litre 1kW Oversink Complete	95010281
124425	Streamline 7ltr 3Kw Oversink Complete	95010283

Oversink



Code	Description	MPN
124976	R Plus 25	94040010
124977	R Plus 45	94040011
124978	R Plus 70 Litre	94040012

Oversink



Code	Description	MPN
124318	Hotflo 10 2.2kw Unvented Heater	95050148
124329	Hotflo 15 2.2kw Unvented Heater	95050149
124460	Hotflo 50L Horiz	7037030
124470	Hotflo 50V 3kW	7700739
124471	Hotflo 80V 3kW	7700780

Oversink



Code	Description	MPN
124320	Supreme 150 Stainless Steel Boiling Unit	95200240
124373	Supreme 150 White Boiling Unit	95200252
124321	Supreme 165 Stainless Steel Boiling Unit	95200241
124374	Supreme 165 White Boiling Unit	95200253
124322	Supreme 180 Stainless Steel Boiling Unit	95200242
124375	Supreme 180 White Boiling Unit	95200254

Point Of Use Oversink



Code	Description	MPN
124330	Express 15 3kw Oversink Heater	95010162
124316	Express 7L 3kw Oversink Heater	95010161
124297	Express 7/17 Litre 1kW	95010160

Oversink



Code	Description	MPN
124332	Multipoint 10 3kw Unvented Heater	95050143
124333	Multipoint 15 3kw Unvented Heater	95050144
12452601	Multipoint Eco 100 Horizontal 3kW	7694024
12452701	Multipoint Eco 100 Vertical 3kW	7694025
12452001	Multipoint Eco 30 Horizontal 3kW	7693971
12452101	Multipoint Eco 30 Vertical 3kW	7693979
12452201	Multipoint Eco 50 Horizontal 3kW	7693980
12452301	Multipoint Eco 50 Vertical 3kW	7693981
12452401	Multipoint Eco 80 Horizontal 3kW	7693982
12452501	Multipoint Eco 80 Vertical 3kW	7693983
124391	Multipoint Instantaneous 9kW	95050425
124390	Multipoint Instantaneous 7kW	95050424

Oversink



Code	Description	MPN
124358	18" Vertical RDT TH/Stat Only	95980036
124385	Powerpack 7kW	94050211

Water Heater Accessories Installation Accessories

Code	Description	MPN
124356	11 Inch Horizontal RDT Thermostat Only	95980035
124355	7" Horizontal RDT TH/Stat Only	95980034
124435	Pack D	95970513
124436	Pack J	95970514
124437	Pack K	95970515
124441	Pack R	95970516
124442	Pack Streamline Basin Taps	95970317
124468	Water Filter Cartridge	7036005
124376	Supreme Drip Tray C/W Waste	95970123
124377	Supreme Drip Tray No Waste	95970128
124306	U1 Pressure Reducer Valve & Strainer	95970352
124307	U2 Expansion Kit Multipoint	95970351
124308	U3 Thermostatic Blending Valve	95970354
124309	U5 Expansion Kit (Hotflo)	95970356
124310	U6 Temp & Press Relief Valve (Hotflo)	95970359

Undersink



Code	Description	MPN
124422	Streamline 10 Litre 1kW Undersink Heater	95010284
124423	Streamline 10ltr 3Kw Undersink Heater	95010286
124420	Streamline 7ltr 1Kw Undersink Heater	95010280
124421	Streamline 7ltr 3Kw Undersink Heater	95010282

Water Heaters



Electric Water Heaters Floorstanding



Code	Description	MPN
124602	Aquaheat 10 litre Unvented Water Heater	94050002
124603	Aquaheat 15 litre Unvented Water Heater	94050003

Oversink



Code	Description	MPN
124595	Aqualine 15 Litre Unvented Water Heater AL15/3	94050014
124552	Aquarius 7 litre Vented Oversink Water Heater	94010001
124553	Aquarius Oversink A7/1	94010002

Undersink



Code	Description	MPN
124566	Aquarius 10 Litre Vented Undersink Water Heater AU10/3	94010010
124564	Aquarius 7 litre Vented Undersink Water Heater	94010008
124563	Aquarius Undersink AU7/01	94010009

Point Of Use Oversink



Code	Description	MPN
124920	Aquarius Oversink A10/3	94010003

Undersink



Code	Description	MPN
124930	Aquaheat AH7/2.2	94050001
124970	Aqualine AL07/394	94050012
124971	Aqualine AL10/394	94050013

Direct Unvented



Code	Description	MPN
25835201	Es 120 Litre Direct Unvented Cylinder	SESINPDR120
25835301	Es 150 Litre Direct Unvented Cylinder	SESINPDR150
25835401	Es 170 Litre Direct Unvented Cylinder	SESINPDR170
25835501	Es 200 Litre Direct Unvented Cylinder	SESINPDR200
25835601	Es 250 Litre Direct Unvented Cylinder	SESINPDR250
25835101	Es 90 Litre Direct Unvented Cylinder	SESINPDR090

Direct Unvented



Code	Description	MPN
25838502	Platinum 150 Direct Unvented Int Exp	PLTDR150
25838504	Platinum 210 Direct Unvented Int Exp	PLTDR210
25838503	Platinum 180 Direct Unvented Int Exp	PLTDR180

Direct Unvented



Code	Description	MPN
25837001	SL Plus Direct 180 Litre EE Unvented Cylinder	PLUDR180SL
25837101	SL Plus Direct 210 Litre EE Unvented Cylinder	PLUDR210
25837301	SL Plus Direct 300 Litre EE Unvented Cylinder	PLUDR300
25836801	SL Plus Direct 150 Litre EE Unvented Cylinder	PLUDR150SL
25836401	SL Plus Direct 90 Litre EE Unvented Cylinder	PLUDR090

Direct Vented



Code	Description	MPN
25831501	900x450mm Direct Vented Xstream Stainless Steel Cylinder	SEXST36X18DIR

Indirect Unvented



Code	Description	MPN
25835701	Es 90 Litre Indirect Unvented Cylinder	SESINPIN090
25835801	Es 120 Litre Indirect Unvented Cylinder	SESINPIN120
25835901	Es 150 Litre Indirect Unvented Cylinder	SESINPIN150
25836001	Es 170 Litre Indirect Unvented Cylinder	SESINPIN170
25836101	Es 200 Litre Indirect Unvented Cylinder	SESINPIN200
25836201	Es 250 Litre Indirect Unvented Cylinder	SESINPIN250
25836301	Es 300 Litre Indirect Unvented Cylinder	SESINPIN300

Indirect Unvented



Code	Description	MPN
25838506	Platinum 150 Indirect Unvented Int Exp	PLTIN150
25838508	Platinum 210 Indirect Unvented Int Exp	PLTIN210
25838509	Platinum 250 Indirect Unvented Int Exp	PLTIN250

Indirect Unvented



Code	Description	MPN
25837401	SL Plus Indirect 90 Litre EE Unvented Cylinder	PLUIN090
25839001	Stainless Lite Plus Indirect 120 Litre Slim Unvented Cylinder	PLUIN120SL
25837601	SL Plus Indirect 150 Litre EE Unvented Cylinder	PLUIN150
25837901	SL Plus Indirect 180 Litre Slim EE Unvented Cylinder	PLUIN180SL
25838101	SL Plus Indirect 210 Litre Slim EE Unvented Cylinder	PLUIN210SL
25838201	SL Plus Indirect 250 Litre EE Unvented Cylinder	PLUIN250
25838301	SL Plus Indirect 300 Litre EE Unvented Cylinder	PLUIN300
25838401	SL Plus Indirect 400 Litre EE Unvented Cylinder	PLUIN400

Indirect Unvented



Code	Description	MPN
25838524	SL Indirect 210 Horizontal Cylinder	PROIN210H
25838525	SL Indirect 250 Horizontal Cylinder	PROIN250H
25838526	SL Indirect 300 Horizontal Cylinder	PROIN300H

Indirect Vented



Code	Description	MPN
25831001	900x400mm Indirect Vented Xstream Stainless Steel Cylinder	SEXST36X16IND
25831101	900x450mm Indirect Vented Xstream Stainless Steel Cylinder	SEXST36X18IND
25831201	1050x400mm Indirect Vented Xstream Stainless Steel Cylinder	SEXST42X16IND
25831301	1050x450mm Indirect Vented Xstream Stainless Steel Cylinder	SEXST42X18IND
25831401	1200x450mm Indirect Vented Xstream Stainless Steel Cylinder	SEXST48X18IND

ASHP Cylinder



Code	Description	MPN
10663324	Quick Recovery Pre-Plumbed Single Coil 250 Lt cylinder	QRSC250PP
10663325	Quick Recovery Pre-Plumbed Single Coil 300 Lt cylinder	QRSC300PP

ASHP Cylinder



Code	Description	MPN
10663318	Quick Recovery Single Coil 150 Lt cylinder	QRSC150
10663319	Quick Recovery Single Coil 180 Lt cylinder	QRSC180
10663320	Quick Recovery Single Coil 210 Lt Cylinder	QRSC210
10663321	Quick Recovery Single Coil 250 Lt cylinder	QRSC250
10663322	Quick Recovery Single Coil 300 Lt Cylinder	QRSC300

ASHP Cylinder



Code	Description	MPN
10663329	Quick Recovery Twin Coil 210 Lt cylinder	QRTC210

Volumiser Unvented



Code	Description	MPN
10663332	30 Litre external volumiser c/w 3kW backup heater	HPIDVOL30EXT6

Direct
Unvented



Indirect
Unvented



Code	Description	MPN
103335	Main Direct 120 Litre Cylinder	720635901
103336	Main Direct 150 Litre Cylinder	720636001
103297	Main Direct 170 Litre Cylinder	720636101
103298	Main Direct 210 Litre Cylinder	720636201
103337	Main Direct 250 Litre Cylinder	720636301
103338	Main Direct 300 Litre Cylinder	720636401

Code	Description	MPN
103290	Main Unvented Indirect 120 Litre Cylinder	5133561
103291	Main Unvented Indirect 150 Litre Cylinder	5133562
103292	Main Unvented Indirect 170 Litre Cylinder	5133563
103293	Main Unvented Indirect 210 Litre Cylinder	5133564
103294	Main Unvented Indirect 250 Litre Cylinder	5133527
103295	Main Unvented Indirect 300 Litre Cylinder	5133528

MAIN

You asked for it...

COMPACT & LIGHT

Say hello to the Main Eco Compact range.



Find out more at
mainheating.co.uk

Part of **BAXI**

Residential and commercial
heating and hot water solutions

Direct Unvented



Indirect Unvented



Indirect Unvented



Code	Description	MPN
124500	Eco Slimline 100 Litre Direct	7034082
124282	Eco 250 Litre DDDD Cylinder	95050477
124227	Eco Plus250 DDDD Direct	95050700
12424801	Eco Plus 300 DDDD EP Direct	95050701

Code	Description	MPN
124507	Megaflo Eco Slimline 150 Litre Indirect	7034089
124275	Eco Plus 250 Litre Indirect Cylinder	95050710
124257	300 Indirect Eco Plus	95050711
12452801	400 Litre Indirect 6 Bar Cylinder	95050540
124276	Eco Plus 400 Litre Indirect Cylinder	95050712

Code	Description	MPN
12429001	Eco Plus 570 i EP Indirect	95050714

Immersion Heaters Commercial

Code	Description	MPN
12440301	12kW Immersion Heater	95970144
12453101	24kW Immersion Heater	95970146

Gold



Code	Description	MPN
124350	11" Gold Dot Immersion + RDT	95110302R
124351	14" Gold Dot Immersion + RDT	95110303R
124352	27" Gold Dot Immersion + RDT	95110306R

Incoloy



Code	Description	MPN
124353	11" Superloy Immersion + RDT	95110901R
124354	27" Superloy Immersion + RDT	95110905R

Indirect
Unvented

Unvented

Vented



Code	Description	MPN
105200	Vaillant uniSTOR 120 S/Steel Unvented Cylinder	20235265
105201	Vaillant uniSTOR 150 S/Steel Unvented Cylinder	20235266
105202	Vaillant uniSTOR 180 S/Steel Unvented Cylinder	-
105203	Vaillant uniSTOR 200 S/Steel Unvented Cylinder	20235268
105204	Vaillant uniSTOR 250 S/Steel Unvented Cylinder	20235269
105205	Vaillant uniSTOR 300 S/Steel Unvented Cylinder	20235270

Code	Description	MPN
105195	Vaillant Slimline Pre-Plumbed 150 Litre Cylinder	10019210
105196	Vaillant Slimline Pre-Plumbed 180 Litre Cylinder	10019211
105198	Vaillant Slimline Pre-Plumbed 250 Litre Cylinder	10019213
105199	Vaillant Slimline Pre-Plumbed 300 Litre Cylinder	10019214

Code	Description
105153	Vaillant Unistor 500 Litre Open Vent Cylinder

Cold Water Tanks Circular



Code	Description	MPN
69010631	Circular tank - 50 gallon includes bye-law kit (Dia x H)-227 litr34x27"	C050

Framed



Code	Description	MPN
69010567	Framed combination tank-45/4 gallon (204 litres)(L x W x H) 23x23x34"	CF23-23-34
69010553	Framed tank - 40 gallon(114 litres)(L x W x H) 23x23x28"	-
69010560	Framed tank - 50 gallon(227 litres) (L x W x H) 23x23x35"	F23-23-35

Expansion



Code	Description	MPN
69010704	Lid for 10/4 gallon expansion tank	X10/4 Lid
69010701	Expansion tank only - 10/4 gallon excludes bye-law kit	X10/4
69010638	expansion tank - 10/4 gallon includes bye-law kit	-

Coffin Type



Code	Description	MPN
69010500	Coffin type cold water tank-100 gallon-454 litres (L x W x H) 64x26x23"	642623
69010449	Coffin type cold water tank-25 gallon(114 litres)(L x W x H) 55x20x12"	552012
69010466	Coffin type cold water tank-50 gallon(227 litres) (L x W x H) 64x18x19"	-
69010483	Coffin type cold water tank-70 gallon(318 litres) (L x W x H) 64x24x19"	642419

Kit



Code	Description	MPN
69010652	Bye-Law 30 Kit (Fittings Only)	X4BL30
69010705	A30 Chamber Kit	XPA30

Rectangular



Code	Description
69010109	Rectangular cold water tank -12 gallon (55 litre) (LxWxH) 20x12x20"
69010143	Rectangular cold water tank - 2 gallon (55 litre) (LxWxH) 20x15x18"
69010126	Rectangular cold water tank - 12 gallon (55 litre) (LxWxH) 24x16x15"
69010160	Rectangular cold water tank -12 gallon (68 litre) (LxWxH)18x18x18"
69010177	Rectangular cold water tank - 15 gallon (68 litre)(Lx WxH) 24x12x20"
69010194	Rectangular cold water tank - 15 gallon (68 litre)(LxWx H) 24x15x18"
69010211	Rectangular cold water tank - 15 gallon (68 litre)(LxWxH) 24x17x17"
69010228	Rectangular cold water tank - 18 gallon(82 litre) (LxWxH) 24x12x24"
69010245	Rectangular cold water tank - 18 gallon(82 litre) (LxWxH) 24x18x19"
69010262	Rectangular cold water tank - 20 gallon(91 litre)(LxWxH) 20x20x20"
69010279	Rectangular cold water tank - 20 gallon(91 litre) (LxWx H) 24x15x24"
69010296	Rectangular cold water tank - 25 gallon(114 litre)(LxWxH) 27x20x20"
69010330	Rectangular cold water tank-30 gallon-136 litres(L x W x H) 24x24x24"
69010366	Rectangular 30 gallon 39x20x17"
69010347	Rectangular cold water tank-35 gallon(159 litres)(L x W x H) 30x24x23"
69010364	Rectangular cold water tank-42 gallon(190 litres) (L x W x H) 39x20x21"
69010381	Rectangular cold water tank-42 gallon(190 litres)(L x W x H) 46x19x19"
69010432	Rectangular cold water tank-50 gallon(227 litres)(L x W x H) 36x24x23"
69010398	Rectangular cold water tank-50 gallon(227 litres) (L x W x H) 46x24x19"

Expansion Vessels Heating



Code	Description	MPN
70069103	12ltr heating Vessel c/w Bracket	TRVES12
70069105	18ltr heating Vessel c/w Bracket	TRVES18
70069107	25ltr heating Vessel c/w Bracket	TRVES25
70069109	35ltr heating Vessel c/w Feet	130G003516
70069100	8ltr heating Vessel c/w Bracket	TRVES08

Expansion Vessels Heating



Code	Description	MPN
135567	12 Litre Expansion Vessel And Sealed System Kit	ZIFP12
135568	18 Litre Expansion Vessel And Sealed System Kit	ZIFP18
135569	24 Litre Expansion Vessel And Sealed System Kit	ZIFP24
135570	35 Litre Expansion Vessel And Sealed System Kit	ZIFP35
135566	8 Litre Expansion Vessel And Sealed System Kit	ZIFP8

Potable



Code	Description	MPN
70069135	100ltr Potable Vessel - No Bracket	11GS008004
70069123	12ltr Potable Vessel	TRPVES12
70069125	19ltr Potable Vessel	TRPVES19
70069127	24ltr Potable Vessel	TRPVES24
70069129	35ltr Potable Vessel - No Bracket	11GS003504
70069131	50ltr Potable Vessel - No Bracket	11GS005004
70069120	8ltr Potable Vessel	TRPVES08

Expansion Vessels Heating



Code	Description	MPN
135565	¼ Sealed System Kit With Bracket	ZKITA075.1
135561	12 Litre Expansion Vessel with bracket	1300001200B
135562	18 Litre Expansion Vessel with bracket	1300001800B
135563	25 Litre Expansion Vessel with bracket	1300002400B
135564	35 Litre Expansion Vessel with feet	1300003503
135560	8 Litre Expansion Vessel with bracket	1300000800B

Heating



Code	Description	MPN
70065603	Series 150A Shock absorber ½"	11B000AA02

Cylinder Accessories Kit



Code	Description	MPN
70065666	Sealed system installation kit 4 - 24 litres	SSKA075

Heating



Code	Description	MPN
70065675	Pressure vessel mounting bracket 4 - 24 litre	HVMB
70065617	Potable pressure vessel 5 litre	ZI-300005WH
70065620	Pressure vessel 8 litre red without bracket	1300000800
70065624	Pressure vessel 12 litre red without bracket	1300001200
70065629	Pressure vessel 18 litre red without bracket	1300001800
70065632	Pressure vessel 24 litre red without bracket	1300002400
70099079	Ultra 12 Litre Wall Mounted Potable Vessel	1100001223
70099057	Ultra 19 Litre Wall Mounted Potable Vessel	1100001955
70065676	Pressure vessel mounting kit 4 - 24 litre	WVMB

Pipe Insulation Rubaflex



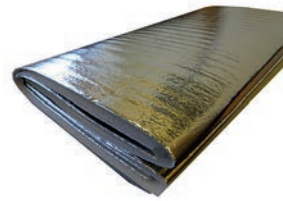
Code	Description	MPN
69020600	Rubaflex Class 'O' 15mm x 13mm x 2m lgth	PD15132S
69020624	Rubaflex Class 'O' 15mm x 19mm x 2m lgth	PD15192S
69020640	Rubaflex Class 'O' 15mm x 09mm x 2m lgth	PD15092S
69020603	Rubaflex Class 'O' 22mm x 13mm x 2m lgth	PD22132S
69020627	Rubaflex Class 'O' 22mm x 19mm x 2m lgth	PD22192S
69020643	Rubaflex Class 'O' 22mm x 09mm x 2m lgth	PD22092S
69020606	Rubaflex Class 'O' 28mm x 13mm x 2m lgth	PD28132S
69020630	Rubaflex Class 'O' 28mm x 19mm x 2m lgth	PD28192S
69020645	Rubaflex Class 'O' 28mm x 09mm x 2m lgth	PD28092S
69020609	Class 'O' 35mm x 13mm x 2m lgth	PD35132S
69020633	Rubaflex Class 'O' 35mm x 19mm x 2m lgth	PD35192S
69020647	Rubaflex Class 'O' 35mm x 09mm x 2m lgth	PD35092S
69020612	Rubaflex Class 'O' 42mm x 13mm x 2m lgth	PD42132S
69020649	Rubaflex Class 'O' 42mm x 09mm x 2m lgth	PD42092S
69020615	Armaflex Class 'O' 54mm x 13mm x 2m lgth	PD54132S

Lagging



Code	Description	MPN
69020110	Pipe lagging 15/22mm - single roll 7.2m	SPL 15-22
69020146	Pipe lagging 28mm - single roll 7.2m	PL-22-28
69020167	Pipe lagging - wrap around type x 7.2m length	WRAP-4

Jacket



Code	Description	MPN
69020527	Hot water Hot water cylinder jacket 42"x 18" BS5615	CJ4218BS
69020560	Radiator foil deluxe 470mm x 4m long	VMN69056
69020515	Hot water Hot water cylinder jacket 36"x 18" BS5615	CJ3618BS

Foam



Code	Description	MPN
69020200	Foam pipe insulation 15mm x 9mm thick x 1m length	PF15091C
69020221	Foam pipe insulation 15mm x 9mm thick x 2m length	PF15092C
69020281	Foam pipe insulation 15mm x 13mm thick x 1m length	PF15131C
69020300	Foam pipe insulation 15mm x 13mm thick x 2m length	PF15132C
69020324	Foam pipe insulation 15mm x 19mm thick x 2m length	PF15192T
69020336	Foam pipe insulation 15mm x 25mm thick x 2m length	PF15252C
69020202	Foam pipe insulation 22mm x 9mm thick x 1m length	PF22091C
69020224	Foam pipe insulation 22mm x 9mm thick x 2m length	PF22092T
69020284	Foam pipe insulation 22mm x 13mm thick x 1m length	PF22131C
69020303	Foam pipe insulation 22mm x 13mm thick x 2m length	PF22132C
69020327	Foam pipe insulation 22mm x 19mm thick x 2m length	PF22192T
69020205	Foam pipe insulation 28mm x 9mm thick x 1m length	PF28091C
69020227	Foam pipe insulation 28mm x 9mm thick x 2m length	PF28092C
69020287	Foam pipe insulation 28mm x 13mm thick x 1m length	PF28131C
69020306	Foam pipe insulation 28mm x 13mm thick x 2m length	PF28132C
69020330	Foam pipe insulation 28mm x 19mm thick x 2m length	PF28192C
69020230	Foam pipe insulation 35mm x 9mm thick x 2m length	PF35092C
69020309	Foam pipe insulation 35mm x 13mm thick x 2m length	PF35132C
69020233	Foam pipe insulation 42mm x 9mm thick x 2m length	PF42092C
69020312	Foam pipe insulation 42mm x 13mm thick x 2m length	PF42132C
69020236	Foam pipe insulation 54mm x 9mm thick x 2m length	PF54092C
69020315	Foam pipe insulation 54mm x 13mm thick x 2m length	PF54132C



AERONA 290

OUR 5TH GENERATION HEAT PUMP



FOR THE DESIGN

Energy efficient
R290 refrigerant

Ultra low
noise levels

Modern styling
& colourway



FOR THE PERFORMANCE

Outputs from
4kW - 15.5kW

Rated at
Air -5°C Water 55°C

Remote monitoring
& management



FOR THE PEACE OF MIND

Performs from
-25°C to + 35°C

7 year
product guarantee*

Design & on-site
technical support

FOR THE NEXT GENERATION



SCAN TO USE OUR FREE
DESIGN SERVICE
or email
designrequest@grantuk.com

*T&C's Apply

GRANTUK.COM