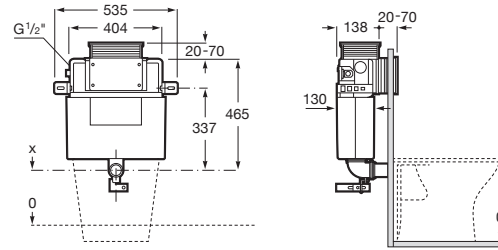


IN-WALL

**BASIC TANK L with AG valve (under window)**  
**820mm high concealed cistern for back-to-wall**  
**WCs**



TECHNICAL DRAWINGS



FEATURES

- Dynamic pressure range: 0,1 - 10 Bar
- Flushing type preset: Dual flush 3/6 litres
- Minimum fixation depth (mm): 150
- Operating panel position: Frontal, Top
- Recommended for public spaces
- Suitable for: Floor-standing toilet
- Tank depth (mm): 130
- Water inlet position: Lateral



Flushing type  
 Flushing type: Dual flush 4.5/3 litres



Flushing type  
 Flushing type: Dual flush 6/3 litres

COMPATIBLE WITH



PLS DUAL - Dual flush operating plate for concealed cistern

89009900.



PL4 DUAL - Dual flush operating plate for concealed cistern

89009800.



PL3 PRO DUAL - Vandal-proof stainless steel dual flush operating plate for concealed cistern

890097004



PL2 DUAL - Dual flush operating plate for concealed cistern

89009600.



PL1 DUAL - Dual flush operating plate for concealed cistern

89009500.



PL10 DUAL - Dual flush operating plate for concealed cistern with matt finishes

89008920.



PL10 DUAL - Dual flush operating plate for concealed cistern

89008900.



PL7 DUAL - Dual flush operating plate for concealed cistern

89008820.

## In-Wall

Systems that combine efficiency and technology, turning them into solutions that look after the design and adapt perfectly to the space concerned. Innovation and the avant-garde join forces to guarantee the best features, where convenience, saving and style are to be found in every detail.

