

Primaflow

F&P

WE SIMPLY DELIVER MORE

FIRES & STOVES

APPROVED RETAILERS 2020/21



Dimplex Centre

Dimplex Centre Plus

valorcentre

The
INSPIRE
COLLECTION

www.primaflowfandp.co.uk

WELCOME

The Glen Dimplex Heating & Ventilation have created an approved network called **Dimplex Approved Centres**, which is split into **Dimplex Centres & Dimplex Centres Plus**. This is only available to retailers which have been pre-approved by Glen Dimplex and allows customers to see, try and touch the products and view first-hand the amazing realistic fire effects. In addition to this, the products come with the latest Dimplex technology and flame effect as well as an additional 2 years warranty, giving extra peace of mind with a total of 3 years product warranty*.



To be a Dimplex Centre retailer the showroom needs to have a minimum of 4 fires on display including at least 1 from the Opti-myst range.



To be a Dimplex Centre Plus retailer, the showroom needs to have a minimum of 7 fires on display, including at least 3 from the Opti-myst range.

The benefits of being a **Valor Retailer Centre** retailer are as follows:

- 1. Exclusive Products** - All approved Dimplex Display & Demonstrate Retailers have access to the Glen Dimplex Display & Demonstrate ranges. Products within the range are only available to retailers who meet certain pre-approved Glen Dimplex distribution criteria.
- 2. Website Listings** - All approved Dimplex Centres & Dimplex Centre Plus Centres are listed on the Glen Dimplex website as an approved retailer.
- 3. Promotional Offers** - Approved Dimplex Centres & Dimplex Centre Plus retailers often receive exclusive offers during the year which the consumer can benefit from.
- 4. 3-Years Guarantee*** - As an approved retailer it gives the consumer who purchases a fire another 2 years additional warranty, making the total warranty for the product 3 years (i.e. normal 1 year warranty, plus the additional 2 years = 3 year warranty in total, providing that the consumer registers their warranty on-line within 28 days of purchase at: www.dimplex.co.uk/register).
- 5. Regular communications and updates** - The approved Dimplex Display & Demonstrate retailer will receive regular product information directly from Glen Dimplex and from Primaflow F&P.
- 6. Approved Glen Dimplex support Package.**



*Terms & Conditions apply

GUIDE TO SYMBOLS

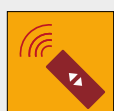
To assist customers in selecting the correct product for their needs, we have identified the key features and displayed below for easy reference. Also, for customers peace of mind the Guarantee period for the products, outputs and efficiency information is also highlighted on each product.

CONTROLS



MANUAL CONTROL

Simple and discreet, the control system is located behind the fires fret or trim. Once the fire is lit rotate the knob to adjust the flame height and heat output.



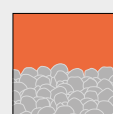
REMOTE CONTROL

The remote control handset is used to light the fire as well as to adjust the flame height and heat output.

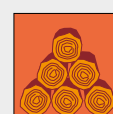
FUEL BED OPTIONS



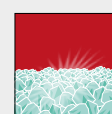
Coals



Pebbles



Logs



Crystals



Optiflame 3D Braemar



Torridon Optiflame 3D



3D Optiflame Braemar - Antique Brass



143405AB Antique Brass

3D Optiflame Braemar

Patented Optiflame 3D effect with multi-coloured effect. Adjustable flame intensity - low middle, high, pulsating.

Features

- Adjustable fuel bed lighting a choice of top on/off back light on/off blue light on/off.
- Fuel bed coal, logs and crystals
- 2KW heat output with 2 heat settings.
- Fan - low, high and cool blow
- Low energy LED lighting
- Cast iron feet
- Fits 16" and 18" Fireplaces



2 kW
OUTPUT

100%
EFFICIENCY

Code	Dimensions (H x W x D) mm	Colour Option
143405AB	613 x 517 x 185	Antique Brass
143405BS	613 x 517 x 185	Brass
143405CP	613 x 517 x 185	Chrome



Remote Control



Coals



Crystals



Logs

Dimplex



143406BK Black

3D Optiflame Dumfries

A patented Optiflame 3D effect is supplied with a choice of coals, logs and crystals for a truly unique appearance.

Features

- Adjustable fuel bed lighting a choice of top on/off back light on/off blue light on/off.
- 2KW heat output with 2 heat settings.
- Fan - low, high and cool blow
- Low energy LED lighting
- Cast iron feet
- Fits 16" and 18" Fireplaces



3 kW
OUTPUT

100%
EFFICIENCY

Code	Dimensions (H x W x D) mm	Colour Option
143406BS	613 x 517 x 202	Brass
143406CP	613 x 517 x 202	Chrome
143406AB	613 x 517 x 202	Antique Brass
143406BK	613 x 517 x 202	Black



Remote Control



Coals



Crystals



Logs

Dimplex



143407CP Chrome

3D Optiflame Glencoe

Supplied in a chrome or brass finish with a clean, curved cast iron fret to suit. Patented Optiflame 3D effect, supplied with a choice of coals, logs, pebbles and crystals.

Features

- Adjustable fuel bed lighting - choice of top light on/off, back light on/off blue light on/off.
- Fuel bed coal, logs, crystal and pebbles.
- Fan - low, high and cool blow
- Run back timer
- Flame effect only setting
- Fits 16" and 18" fireplace
- Cast iron frame feet



Code	Dimensions (H x W x D) mm	Colour Option
143407CP	635 x 517 x 218	Chrome
143407BS	635 x 517 x 218	Brass



Remote Control



Coals



Crystals



Logs



Pebbles



2 kW
OUTPUT

100%
EFFICIENCY



143409CP Chrome

3D Optiflame Portree

Patented Optiflame 3D effect with multi coloured effect. Adjustable flame intensity - low, middle, high and pulsating.

Features

- Adjustable fuel bed lighting - choice of top light on/off back light on/off blue light on/off.
- Fuel bed - coal, logs, crystal and pebbles.
- 2kW heat output with 2 heat settings
- Fan - low high and cool blow
- Run back timer
- Flame effect only setting
- Low energy LED lighting
- Fits 16" and 18" fireplaces



Code	Dimensions (H x W x D) mm	Colour Option
143409CP	613 x 517 x 195	Chrome



2 kW
OUTPUT

100%
EFFICIENCY



143408CP Chrome

3D Optiflame Torridon

Patented Optiflame 3D effect with multi-coloured effect. Adjustable flame intensity - low middle, high pulsating.

Features

- Adjustable fuel bed lighting - choice of top light on/off, back light on/off, blue light
- Fuel bed - coal logs, crystal and pebbles.
- 2kW heat output with 2 heat settings
- Fan - low, high and cool blow
- Run back timer
- Flame effect only setting
- Low energy LED light
- Cast iron feet
- Fits 16" and 18" Fireplaces



Code	Dimensions (H x W x D) mm	Colour Option
143408CP	613 x 517 x 210	Chrome



Remote Control



Coals



Crystals



Logs



Pebbles



2 kW
OUTPUT

100%
EFFICIENCY



142953 Stone Effect

Alameda Suite

Acting as a dramatic focal point for any space, this suite incorporates the incredible visual effects available from the Opti-myst range, in a beautifully finished stone effect surround.

Features

- Flame effect can be used independently of heat
- Fully concealed 2 fan heater with choice of two heat settings
- Optional brick effect back panel included
- Remote control
- Suite includes electric fire illustrated

Code	Dimensions (H x W x D) mm	Colour Option
142953	895 x 1075 x 300	Stone Effect



Remote Control



Logs

Dimplex



14294201

Bari Electric Stove

A compact, classic freestanding electric stove with Optiflame effect. With an opening door and chrome details this stove really looks the part. This product is only suitable for well insulated spaces or occasional use

Features

- 2kW fan heater
- Remote
- Optiflame effect
- Log effect fuel bed
- Quick and simple plug in power supply

Code	Dimensions (H x W x D) mm	Colour Option
14294201	550 x 440 x 315	Black

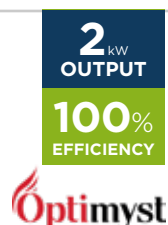


Remote Control



Logs

Dimplex



14343101

Burnham Optimyst Electric Suite

The Burnham electric suite is a stylish and complete offering from Dimplex. A dramatic focal point for any space, the suite incorporates the realistic flame effects available from the Optimyst range.

The fire can operate via a remote control and can even be used independently of the fully concealed 2kW heater, meaning you can enjoy the classic feel of the fire all year round.

Features

- Complete fireplace suite
- Remote controlled with two heat settings
- Unique Optimyst effect
- Realistic log fuel bed

Code	Dimensions (H x W x D) mm	Colour Option
14343101	870 x 920 x 320	White & Black



Remote Control



Logs

Dimplex





143395WT

Cavalli Optimyst Suite

The Cavalli electric suite is a stylish and complete offering from Dimplex. A dramatic focal point for any space, the suite incorporates the realistic flame effects available from the Optimyst range, in a beautifully finished white surround. A mirrored panel offers a stunning backdrop to the fire.

X_{kW}
OUTPUT

XX%
EFFICIENCY

Optimyst

Features

- Complete fireplace suite
- Beautiful white finish
- Remote controlled with two heat settings
- Unique Optimyst effect
- Realistic log fuel bed

Code	Dimensions (H x W x D) mm	Colour Option
143395WT	910x1140x300	White



Remote Control



Logs

Dimplex



142954 Cream White

Auberry

Medium sized electric stove with creamy white gloss enamel finish. Remote controlled with two heat settings and unique Opti-myst effect.

2_{kW}
OUTPUT

100%
EFFICIENCY

Optimyst

Features

- Creamy white gloss enamel finish
- Remote controlled with two heat settings
- Unique Opti-myst effect
- Realistic LED log fuel bed

Code	Dimensions (H x W x D) mm	Colour Option
142954	620 x 480 x 300	Cream White



Remote Control



Logs

Dimplex



142963 Black Gloss

Burgate

The Burgate is an eye-catching take on a classic design. With fully variable flame and smoke intensity controls, the stove utilises patented Opti-myst technology for the world's most realistic electric flame effect.

2_{kW}
OUTPUT

100%
EFFICIENCY

Optimyst

Features

- Concealed 2 fan heater with choice of two heat settings
- Effect can be used independently of heat
- Thermostatic setting to control heat
- Remote control

Code	Dimensions (H x W x D) mm	Colour Option
142963	670 x 620 x 390	Black Gloss



Remote Control



Logs

Dimplex



142947 Black

Cellini Opti-V®

Realistic 3D Opti-V® flame effect with Freestanding Opti-V® electric fire, LCD television, fuel bed and lighting, with or without legs.

Features

- Freestanding Opti-V® electric fire
- LCD television, fuel bed and lighting
- With or without legs
- No heat

Code	Dimensions (H x W x D) mm	Colour Option
142947	705 x 420 x 360	Black



Remote Control



Logs

Dimplex

Opti-V



143401BS Brass

Crestmore

The Crestmore Opti-myst Electric Fire combines a contemporary brass effect with advanced touch sensing control.

Features

- Fully variable flame & smoke intensity control
- Opti-myst effect can be used independently of heat
- Remote control
- 2kW heater

Code	Dimensions (H x W x D) mm	Colour Option
143401BS	625 x 486 x 207	Brass



Remote Control



Coals

Dimplex

Optimyst

**2 kW
OUTPUT**
**100%
EFFICIENCY**



143392AB Antique Brass

Danville

Taking aspects of a traditional fireplace and combining with one of four beautiful finishes, the Danville is a look to suit any interior scheme. With a coal effect fuel bed and a choice of finishes, it provides a beautifully realistic focal point.

Features

- Remote control
- Concealed 2 fan heater with choice of two heat settings
- Thermostatic setting to control heat
- Inset depth of just 65mm

Code	Dimensions (H x W x D) mm	Colour Option
143392AB	620 x 520 x 231	Antique Brass
143392BK	620 x 520 x 231	Black
143392BS	620 x 520 x 231	Brass
143392CP	620 x 520 x 231	Chrome



Remote Control



Coals

Dimplex

Optimyst

**2 kW
OUTPUT**
**100%
EFFICIENCY**



Esme Suite



The Esme electric wall suite makes a stunning impression with a beautifully minimalist design. With a stunningly clean design and finish it brings warmth and style in equal measure. Easily controlled by the remote control, you experience the incredibly realistic Opti-myst flame and smoke effects from the comfort of your sofa.

Features

- Remote control
- Opti-myst flame effect
- Contemporary wall hanging design
- No Heat



143355 White

Code	Dimensions (H x W x D) mm	Colour Option
143355	656 x 1168 x 305	White



Remote Control



Logs





142964 Oak/Black

Figaro Suite

With a Dimplex Figaro electric fireplace suite you can enjoy the benefits of the Optiflame effect at the flick of a switch. Installation is easy, you can just plug in and go.

Features

- Flame can be used independently of heat
- Remote control
- Concealed controls
- Ready assembled
- Suite includes electric fire illustrated

1.5
kW
OUTPUT

100%
EFFICIENCY

Optiflame

Code	Dimensions (H x W x D) mm	Colour Option
142964	750 x 700 x 260	Oak/Black



Remote Control



Logs

Dimplex



Ignite XLF50



14300501 Black

Ignite XLF50

IgniteXL® stands apart as more lifelike and visually stunning than any other electric fireplace. With new, patented flame technology, IgniteXL® captures the charm and ambiance of a real fire. Edge-to-edge glass offers a flawless panoramic view of the dazzling flames from any angle.

Features

- Flame effect only settings Low

Code	Dimensions (H x W x D) mm	Colour Option
14300501	419 x 1306 x 147	Black



Remote Control



Crystals

2
kW
OUTPUT

100%
EFFICIENCY

Optiflame

Dimplex



2 kW
OUTPUT

100%
EFFICIENCY

Optiflame

Ignite XLF74

IgniteXL® stands apart as more lifelike and visually stunning than any other electric fireplace. With new, patented flame technology, IgniteXL® captures the charm and ambiance of a real fire. Edge-to-edge glass offers a flawless panoramic view of the dazzling flames from any angle.

Features

- Optiflame multi-colour effect
- Crystal and log effect fuel beds available
- Choice of 2 heat settings
- Flame effect only settings
- Low energy LED lighting
- Slim depth (147mm) for ease of installation.
- Suitable for inseting into a wall or fitting into a bespoke surround.

14300601 Black

Code	Dimensions (H x W x D) mm	Colour Option
14300601	419 x 1941 x 147	Black



Remote Control



Crystals

Dimplex



Lucia LUC20

A medium sized electric stove with LED log and Optiflame effect works independently of the heat source, or you can choose one of the heat settings from the built-in 2kW fan heater.

2 kW
OUTPUT

100%
EFFICIENCY

Optiflame

Features

- Optiflame effect
- 2kW fan heater with a choice of two heat settings
- Opening door for added authenticity
- Flame effect can be used independently of heat
- Plug and Play

Code	Dimensions (H x W x D) mm	Colour Option
14300701	597 x 510 x 340	Black



Remote Control



Logs

Dimplex

14300701 Black

Lucia LUC20 Black





142965 Cream Gloss

Meribel

The Dimplex Meribel combines a luxurious design with incredible effects, and a powerful electric fan heater. The creamy white gloss enamel finish oozes class, perfectly balancing aesthetic and practicality.

Features

- Concealed 2 fan heater with choice of two heat settings
- Effect can be used independently of heat
- Thermostatic setting to control heat
- Remote control

Code	Dimensions (H x W x D) mm	Colour Option
142965	670 x 620 x 390	Cream Gloss



Remote Control



Logs

Dimplex

2 kW
OUTPUT

100%
EFFICIENCY

Optimyst



143171 Stone Effect

Mini Mozart Suite

1.5kW fan heater with choice of heat settings, concealed controls, and flame effect that can be used independently of heat. Suite includes electric fire illustrated.

Features

- Choice of heat settings
- Concealed controls
- Flame effect can be used independently of heat
- Optiflame effect
- Suite includes electric fire illustrated

Code	Dimensions (H x W x D) mm	Colour Option
143171	750 x 700 x 260	Stone Effect



Remote Control



Logs

Dimplex

1.5 kW
OUTPUT

100%
EFFICIENCY

Optiflame



143172 Stone Effect

Moorefield Suite

The Moorefield electric suite is a fantastically simple and elegant fireplace. Acting as a dramatic focal point for any space, the suite incorporates the incredible visual effects available from the Opti-myst range, in a beautifully finished stone effect surround.

Features

- Remote control
- Fully concealed 2 fan heater with choice of two heat settings and thermostatic control
- Elegant stone effect surround that can be fitted flat-to-wall
- Log effect fuel bed
- Suite includes electric fire illustrated

Code	Dimensions (H x W x D) mm	Colour Option
143172	870 x 920 x 315	Stone Effect



Remote Control



Logs

Dimplex

2 kW
OUTPUT

100%
EFFICIENCY

Optiflame



Oakhurst Black



143173 Black

Oakhurst

The Oakhurst is a beautifully simple electric stove, based on a classic cast-iron design. With a contemporary matt black finish and real working doors; it's a look to suit any interior scheme.

Features

- Concealed 2 fan heater with choice of two heat setting
- Remote control
- Thermostatic setting to control heat
- Freestanding with minimal installation required

2 kW
OUTPUT

100%
EFFICIENCY

Optimyst

Code	Dimensions (H x W x D) mm	Colour Option
143173	620 x 480 x 300	Black



Remote Control



Logs

 **Dimplex**



142940 Black

Opti-myst Cassette 400/600

Utilise the world's most realistic flame effect with the Cassette 400 and 600. The cassette has the same incredible Opti-myst technology as expected from Dimplex, for custom design installations. Let your imagination run wild.

Features

- Fully variable flame and smoke intensity control
- Remote control
- Medium width
- Quick-fit IEC (kettle) connection
- No heat

Code	Dimensions (H x W x D) mm	Colour Option
142940	171 x 405 x 216	Black
142941	171 x 564 x 216	Black



Remote Control



Logs

 **Dimplex**



142944 Black

Opti-myst Cassette 500/1000



Utilise the world's most realistic flame effect with the Cassette 500 and 1000. The cassette has the same incredible Opti-myst technology as expected from Dimplex, for custom design installations. Let your imagination run wild.

Features

- Fully variable flame and smoke intensity control
- Remote control
- Medium width
- Quick-fit IEC (kettle) connection
- No heat

Code	Dimensions (H x W x D) mm	Colour Option
142944	236 x 508 x 354	Black
142945	236 x 1017 x 354	Black



Remote Control



Logs



142942 Black

Opti-myst Chassis 400/600

2 kW
OUTPUT

100%
EFFICIENCY



Utilise the world's most realistic flame effect with the Chassis 400 and 600. The cassette has the same incredible Opti-myst technology as expected from Dimplex, for custom design installations. The chassis models come with a 2kW fan heater. Let your imagination run wild.

Features

- Fully variable flame and smoke intensity control
- Remote control
- Medium width
- Quick-fit IEC (kettle) connection

Code	Dimensions (H x W x D) mm	Colour Option
142942	700 x 490 x 255	Black
142943	700 x 646 x 255	Black



Remote Control



143410CP Chrome

Optiflame Ellister

Optiflame effect with multi-coloured effect.

2 kW
OUTPUT

100%
EFFICIENCY



Features

- Adjustable flame intensity - low middle, high, pulsating
- Adjustable fuel bed lighting - choice of top light on/off, blue light on/off
- Fuel bed - coal, logs, crystal and pebbles
- Run back timer
- Fan - low high and cool blow
- Flame effect only settings
- Fits 16" and 18" fireplaces

Code	Dimensions (H x W x D) mm	Colour Option
143410CP	613 x 517 x 195	Chrome



Remote Control



Coals



Crystals



Logs



Pebbles





Opti-V PGF-10

Opti-V

Realistic flame effect with High Definition LCD television screen, sound effect and striking but simple design.

Features

- High Definition LCD television screen
- Striking but simple design
- Sound effect
- Remote control
- No heat



142950 Black

Code	Dimensions (H x W x D) mm	Colour Option
142950	450 x 736 x 345	Black/Graphite



Remote Control



Logs

Dimplex



Opti-V

Opti-V PGF-20

Realistic flame effect with High Definition LCD television screen, sound effect and striking but simple design.



142951 Black

Features

- High Definition LCD television screen
- Striking but simple design
- Sound effect
- Remote control
- No heat

Code	Dimensions (H x W x D) mm	Colour Option
142951	450 x 1356 x 345	Black



Remote Control



Logs

Dimplex



Penngrove

Traditional meets modern as Dimplex combines a contemporary chrome effect fret with advanced touch sensing control.

**2 kW
OUTPUT**

**100%
EFFICIENCY**

Optiflame

Features

- Electronic display & touch sensing control
- Thermostatic & remote control.
- Choice of two heat settings
- 2kW heater



143402CP Chrome

Code	Dimensions (H x W x D) mm	Colour Option
143402CP	625 x 486 x 207	Chrome



Remote Control



Coals

Dimplex



143393 Black with Anthracite

Redway

The Redway is a combination of incredible visual effects, practical electric heat, and a beautifully framed piece of visual art for your wall. Easily operated by a remote control, you'll also experience the patented Opti-myst flame and smoke effect.

Features

- Remote control
- Concealed 2 fan heater with choice of two heat settings and thermostatic control
- Chassis can be partially inset for 20mm gap from wall, total depth of just 181mm.
- Log effect fuel bed included. White pebble bed available as optional extra

Code	Dimensions (H x W x D) mm	Colour Option
143393	690 x 760 x 181	Black with Anthracite



Remote Control



Logs

2 kW
OUTPUT

100%
EFFICIENCY

Optimyst

Dimplex



143174 Chrome

Sacramento

Combining a contemporary feel with the build of a traditional fireplace, the Sacramento is a powerful and stylish twist on the electric fire. Finished in eye catching chrome with a coal effect fuel bed, it provides a beautifully realistic focal point for any space.

Features

- Remote control
- Concealed 2 fan heater with choice of two heat settings
- Thermostatic setting to control heat
- Inset depth of just 65mm

Code	Dimensions (H x W x D) mm	Colour Option
143174	620 x 520 x 220	Chrome



Remote Control



Coals

2 kW
OUTPUT

100%
EFFICIENCY

Optimyst

Dimplex



Sacramento Chrome



142956 Black

Silverton

Combining state-of-the-art technology with a traditional basket fire design, the Silverton offers the patented Opti-myst smoke effect together with a glowing ash bed to create a stunningly realistic open fire effect.

Features

- Remote control
- Low energy LED special effect lighting
- Individual logs and removable glowing ash bed
- No Heat

Code	Dimensions (H x W x D) mm	Colour Option
142956	305 x 710 x 355	Black



Remote Control



Logs



142967 Black

Sunningdale

The Sunningdale Opti-V Electric Fire offers a virtual fireplace experience like no other with ultra-realistic flames flickering among the LED logs and the sound of crackling logs.

Features

- Cast-iron style stove with Opti-V 3D effect electric fire
- Flame effect is shown via HD TV screen
- LED fuel bed and lighting
- 2 fan heater with a choice of 2 heat settings
- Electronic controls, crackling logs sound effects with adjustable volume, thermostat and remote control

Code	Dimensions (H x W x D) mm	Colour Option
142967	660 x 630 x 440	Black



Remote Control



Logs

2 kW
OUTPUT

100%
EFFICIENCY



143394 Black

Tahoe

The Tahoe is a combination of incredible visual effects and practical electric heat, all beautifully cased in a thick one-piece black frame. Easily operated by the remote control, you'll also experience the patented Opti-myst flame and smoke effects.

Features

- Remote control
- Concealed 2 fan heater with choice of two heat settings and thermostatic control
- Chassis can be partially inset for 20mm gap from wall, total depth of just 181mm.
- Log effect fuel bed included

Code	Dimensions (H x W x D) mm	Colour Option
143394	695 x 900 x 170	Black



Remote Control



Logs

2 kW
OUTPUT

100%
EFFICIENCY



143356 White

Talía Suite

The Talía makes an immediate focal point for any space. With its fresh monochrome finish it brings warmth and style in equal measure. Easily controlled by the remote control, you experience the incredibly realistic Opti-myst flame and smoke effects alongside the brilliantly concealed 2kW electric fan heater.

2 kW
OUTPUT

100%
EFFICIENCY

Optimyst

Features

- Remote control
- Opti-myst flame effect
- Contemporary design
- 2kW heater
- Heat independent of flame effect

Code	Dimensions (H x W x D) mm	Colour Option
143356	805 x 1320 x 381	White



Remote Control



Logs

Dimplex



142948 Black

Volterra Opti-V®

This Volterra basket fire is part of the Dimplex Opti-V® range. This utilises the latest High Definition TV technology to create flames and sparks for a virtual fireplace experience like no other.

Opti-V

Features

- Freestanding Opti-V® electric fire
- LCD television, fuel bed and lighting
- Can be displayed within a surround
- No heat

Code	Dimensions (H x W x D) mm	Colour Option
142948	520 x 625 x 360	Black



Remote Control



Dimplex



143403 Black

Willowbrook

The Willowbrook with Opti-myst flame effect is a perfect combination of traditional looks and contemporary ease, with a clean but sharp twist.

2 kW
OUTPUT

100%
EFFICIENCY

Optimyst

Features

- Black cast iron effect
- Electric display
- 2 fan heater with choice of 2 heat settings
- Thermostat & remote control

Code	Dimensions (H x W x D) mm	Colour Option
143403	580 x 440 x 280	Black



Remote Control



Logs

Dimplex



Torridon

Offer your customers something special

For the first time in an electric fire, a 2D flame effect is given 3D depth with the illusion of seeing through the flames to the back of the fire.

- Choice of 11 models in 5 different designs
- Mix and match fuel bed - all models come with crystals, logs and coals. Selected models also have pebbles
- Adjustable flame colour - deep orange or with blue flame
- Adjustable flame intensity - low, medium, high, pulsating; plus option to have fuel bed top light on or off
- 2kW thermostatically controlled fan heater
- Flame effect works independent of heat
- Remote control of all features



Braemar in brass effect



Nest Protect

It's time to expect more from your smoke alarm.

The smart smoke and carbon monoxide detector that
thinks, speaks, and alerts your phone.



Get alerts on your phone.

Google Nest Protect sends an alert to your phone when something's wrong at home.

Tells you what and where.

Google Nest Protect speaks up if there's smoke or CO and tells you where it is, so you know what to do.

Sees the CO you can't.

Carbon monoxide is an invisible, poisonous gas. Google Nest Protect tells you where it's hiding.

Discover the Allure Collection



Allure Clifton Chrome with Inlay Trim

The Allure range of inset gas fires provides increased flexibility when it comes to choosing a gas fire.

Combining the latest technology from Valor, the Allure range delivers the flame realism of a real fire courtesy of the deep, realistic coal effect fuel bed, warm glow and open fronted design.

- 4kW heat output / 64.5% efficiency
- Choice of five designs - Alton, Bauhaus, Blenheim, Clifton & Downton
- Choice of four colour finishes - black, brass, brushed chrome & chrome
- Choice of seven trim options in a mix of colour finishes
- Available in manual, Fireslide or remote control
- Suitable for natural gas & LPG



1 year standard + 2 year extension if consumer purchases from Valor Centre retailer and registers within 28 days of purchase

WELCOME

The Glen Dimplex Heating & Ventilation have created an approved network scheme, which is split into Valor Centre & Valor Centre Plus. This is only available to retailers which have been pre-approved by Glen Dimplex and allows customers to see, try and touch the products and view first-hand the amazing gas fires.

To be a **Valor Retailer Centre**, the retail business needs to:

- Display x 3 Gas Fires from the Valor Centre range, including 1 live gas fire
- Gas installations to conform to benchmark standards
- Must agree to take part in all Valor technical training

To be a **Valor Retailer Plus Centre**, the retail business needs to:

- Display x 4 Fires from the Valor Centre range including 1 live gas fire
- Display 1 x Inspire live
- Gas installations to conform to benchmark standards
- Agree to participate in Valor technical training sessions

The benefits of being a **Valor Retailer Centre** retailer are as follows:

1. **Exclusive Products** - All approved Valor Retailers have access to the Valor Centre range of products. Products within the Valor Centre range are only available to retailers who satisfy certain distribution criteria.
2. **Website Listings** - All approved retailers are listed on the Glen Dimplex website as an approved retailer.
3. **Enhanced display terms.**
4. **Promotional Offers** - Approved Dimplex Centres & Dimplex Centre Plus retailers often receive exclusive offers during the year which the consumer can benefit from.
5. **3-Years Guarantee*** - As an approved retailer, it gives the consumer who purchases a fire another 2 years additional warranty, making the total warranty for the product 3 years (i.e. normal 1 year warranty, plus the additional 2 years = 3 year warranty in total, providing that the consumer registers their warranty on-line within 28 days of purchase at: www.dimplex.co.uk/register).
6. **Regular communications and updates** - The approved retailer will receive regular product information directly from Glen Dimplex and from Primaflow F&P.
7. **Approved Glen Dimplex support Package.**

*Terms & Conditions apply



GUIDE TO SYMBOLS

To assist customers in selecting the correct product for their needs, we have identified the key features and displayed below for easy reference. Also, for customers peace of mind the Guarantee period for the products, outputs and efficiency information is also highlighted on each product.

CHIMNEY OR FLUE

Your choice of fire will be dictated by the type of chimney or flue you have.

If you're not sure, then take a look at your roof and cross-reference it with the following guide.



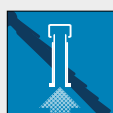
BRICK CHIMNEY (Class 1) Suitable for all fires

A conventional brick chimney is easily recognisable by a chimney stack with accompanying terracotta pot or gas terminal.



PRE-CAST FLUE Suitable for a wide range of slimline fires

Built from concrete or clay blocks, pre-cast flues provide a rectangular section flue. They can be identified by a ridge vent or metal flue tube and terminal on the roof.



PRE-FABRICATED FLUE (Class 2) Suitable for most fires

This is an interlocking metal flue tube system easily identifiable by a metal flue and terminal on the roof and a metal flue box behind the fire.



BALANCED FLUE

Balanced flue fires vent directly outside through a horizontal co-axial pipe. An outer pipe draws air in from the outside and an inner pipe expels combustion gases.



Allure Clifton Chrome

CONTROLS



MANUAL CONTROL

Simple and discreet, the control system is located behind the fires fret or trim. Once the fire is lit rotate the knob to adjust the flame height and heat output.



ELECTRONIC CONTROL

Both ignition and heat are controlled by a single rotary motion so there is no need to push down and twist the ignition to light the fire. Requires AA battery.



SLIDE CONTROL

The control system is located on the top right-hand side of the fire. Push and hold the lever down to ignite and move it up and down to adjust the flame height and heat output.



REMOTE CONTROL

The remote control handset is used to light the fire as well as to adjust the flame height and heat output.



TOUCH CONTROL (ELECTRIC)

Touch control via two switches, on/off and high/low.

FUEL BED OPTIONS



Coals



Radiant



109880BS shown with Alton Firefront (ordered separately - see page 6)

Allure FD Convector MC - Full Trim

A true classic that will fit seamlessly with any interior style. Combine with a choice of Firefronts; the Alton, Bauhaus, Blenheim, Clifton or Downton (sold separately).

Features

- 1.3 - 4kW heat output
- 64% nett efficiency

Code	Dimensions (H x W x D) mm	Colour Option
109880BK	615 x 506 x 235	Black
109880BS	615 x 506 x 235	Brass
109880BC	615 x 506 x 235	Brushed Chrome
109880CP	615 x 506 x 235	Chrome



Brick Chimney



Pre-Fab Flue



Manual Control



4^{kW}
OUTPUT

64%
EFFICIENCY



109881BB shown with Clifton Firefront (ordered separately - see page 6)

Allure FD Convector MC - Inlay Trim

A true classic that will fit seamlessly with any interior style. Combine with a choice of Firefronts; the Alton, Bauhaus, Blenheim, Clifton or Downton (sold separately).

Features

- 1.3 - 4kW heat output
- 64% nett efficiency

Code	Dimensions (H x W x D) mm	Colour Option
109881BB	615 x 506 x 235	Black/Brass
109881BC	615 x 506 x 235	Black/Brushed Chrome
109881BL	615 x 506 x 235	Black/Chrome



Brick Chimney



Pre-Fab Flue



Manual Control



4^{kW}
OUTPUT

64%
EFFICIENCY



109882Bk shown with Downton Firefront (ordered separately - see page 6)

Allure FD Convector FS - Full Trim

A true classic that will fit seamlessly with any interior style. Combine with a choice of Firefronts; the Alton, Bauhaus, Blenheim, Clifton or Downton (sold separately).

Features

- 1.3 - 4kW heat output
- 64% nett efficiency

Code	Dimensions (H x W x D) mm	Colour Option
109882BK	615 x 506 x 235	Black
109882BS	615 x 506 x 235	Brass
109882BC	615 x 506 x 235	Brushed Chrome
109882CP	615 x 506 x 235	Chrome



Brick Chimney



Pre-Fab Flue



Slide Control



4^{kW}
OUTPUT

64%
EFFICIENCY



109883BC shown with Bauhaus Firefront
(ordered separately - see page 6)

Allure FD Convector FS - Inlay Trim

A true classic that will fit seamlessly with any interior style. Combine with a choice of Firefronts; the Alton, Bauhaus, Blenheim, Clifton or Downton (sold separately).

Features

- 1.3 - 4kW heat output
- 64% nett efficiency
- Manual or Fireslide Control or Remote Control options

Code	Dimensions (H x W x D) mm	Colour Option
109883BB	615 x 506 x 235	Black/Brass
109883BC	615 x 506 x 235	Black/Brushed Chrome
109883BL	615 x 506 x 235	Black/Chrome



Brick Chimney



Pre-Fab Flue



Slide Control



4_{kW}
OUTPUT

64%
EFFICIENCY



109877BC shown with Blenheim Firefront
(ordered separately - see page 6)

Allure FD Convector RC - Full Trim

A true classic that will fit seamlessly with any interior style. Combine with a choice of Firefronts; the Alton, Bauhaus, Blenheim, Clifton or Downton (sold separately).

Features

- 1.3 - 4kW heat output
- 64% nett efficiency

Code	Dimensions (H x W x D) mm	Colour Option
109877BK	615 x 506 x 235	Black
109877BR	615 x 506 x 235	Brass
109877BC	615 x 506 x 235	Brushed Chrome
109877CP	615 x 506 x 235	Chrome



Brick Chimney



Pre-Fab Flue



Remote Control



4_{kW}
OUTPUT

64%
EFFICIENCY



109878BC shown with Alton Firefront
(ordered separately - see page 6)

Allure FD Convector RC - Inlay Trim

A true classic that will fit seamlessly with any interior style. Combine with a choice of Firefronts; the Alton, Bauhaus, Blenheim, Clifton or Downton (sold separately).

Features

- 1.3 - 4kW heat output
- 64% nett efficiency

Code	Dimensions (H x W x D) mm	Colour Option
109878BB	615 x 506 x 235	Black/Brass
109878BL	615 x 506 x 235	Black/Brushed Chrome
109878BC	615 x 506 x 235	Black/Chrome



Brick Chimney



Pre-Fab Flue



Remote Control



4_{kW}
OUTPUT

64%
EFFICIENCY

Firefronts

The following Firefronts should be ordered along with the compatible engines listed on pages 4 and 5.

Alton Firefront



103784BS Brass

Code	Firefront	Colour Option
103784BS	Alton	Brass
103784CP	Alton	Chrome
109884BK	Alton	Black
109884BC	Alton	Brushed Chrome

Bauhaus Firefront



109885BC Brushed Chrome

Code	Firefront	Colour Option
103785BS	Bauhaus	Brass
103785CP	Bauhaus	Chrome
109885BK	Bauhaus	Black
109885BC	Bauhaus	Brushed Chrome

Blenheim Firefront



103781C Chrome

Code	Firefront	Colour Option
103781BS	Blenheim	Brass
103781C	Blenheim	Chrome
109886BK	Blenheim	Black
109886BC	Blenheim	Brushed Chrome

Clifton Firefront



103787BS Brass

Code	Firefront	Colour Option
103787BS	Clifton	Brass
103787CP	Clifton	Chrome
109887BK	Clifton	Black
109887BC	Clifton	Brushed Chrome

Downton Firefront



109888BK Black

Code	Firefront	Colour Option
103783BS	Downton	Brass
103783C	Downton	Chrome
109888BK	Downton	Black
109888BC	Downton	Brushed Chrome



Chrome Half Trim
with Alton Fret

Trueflame HE Full Depth Alton

Traditional design with reliable performance.

Features

- Beautifully traditional gas inset fire
- Choice of colours and finishes
- Fantastic Fireslide control
- Coal effect fuel bed for added authenticity

3.85 kW
OUTPUT

85%
EFFICIENCY

Dimensions (H x W x D) mm

Full Trim - 621 x 522 x 186

Half Trim - 610 x 500 x 186

Colour

Brass

Chrome

Full Trim

103777BS

103777CP

Half Trim

103778BS

103778CP

Alton Fret Code

103784BS

103784CP



Brick
Chimney



Pre-Fab
Flue



Slide
Control



Coals



Brass Full Trim
with Alton Fret

Trueflame Full Depth Convector Alton

Traditional design with reliable performance.

Features

- Beautifully traditional gas inset fire
- Choice of colours and finishes
- Coal effect fuel bed for added authenticity

4 kW
OUTPUT

64%
EFFICIENCY

Dimensions (H x W x D) mm

Full Trim - 621 x 522 x 235

Half Trim - 610 x 500 x 235

Colour

Brass

Chrome

Full Trim

103779BS

103779CP

Half Trim

103780BS

103780CP

Alton Fret Code

103784BS

103784CP



Brick
Chimney



Pre-Fab
Flue



Slide
Control



Coals



Brass Full Trim
with Bauhaus Fret

Trueflame HE Full Depth Bauhaus

Traditional design with reliable performance.

Features

- Beautifully traditional gas inset fire
- Choice of colours and finishes
- Coal effect fuel bed for added authenticity

3.85 kW
OUTPUT

85%
EFFICIENCY

Dimensions (H x W x D) mm

Full Trim - 621 x 522 x 186

Half Trim - 610 x 500 x 186

Colour

Brass

Chrome

Full Trim

103777BS

103777CP

Half Trim

103778BS

103778CP

Bauhaus Fret Code

103785BS

103785CP



Brick
Chimney



Pre-Fab
Flue



Slide
Control



Coals





Chrome Half Trim
with Bauhaus Fret

Trueflame Full Depth Convector Bauhaus

Traditional design with reliable performance.

Features

- Beautifully traditional gas inset fire
- Choice of colours and finishes
- Fantastic Fireslide control
- Coal effect fuel bed for added authenticity

Dimensions (H x W x D) mm

Full Trim - 621 x 522 x 235

Half Trim - 610 x 500 x 235

Colour

Brass

Chrome

Full Trim

103779BS

103779CP

Half Trim

103780BS

103780CP

Bauhaus Fret Code

103785BS

103785CP



Brick
Chimney



Pre-Fab
Flue



Slide
Control



Coals



4^{kW}
OUTPUT

64%
EFFICIENCY



Brass Full Trim
with Clifton Fret

Trueflame HE Full Depth Clifton

Traditional design with reliable performance.

Features

- Beautifully traditional gas inset fire
- Choice of colours and finishes
- Fantastic Fireslide control
- Coal effect fuel bed for added authenticity

Dimensions (H x W x D) mm

Full Trim - 621 x 522 x 186

Half Trim - 610 x 500 x 186

Colour

Brass

Chrome

Full Trim

103777BS

103777CP

Half Trim

103778BS

103778CP

Clifton Fret Code

103787BS

103787CP



Brick
Chimney



Pre-Fab
Flue



Slide
Control



Coals



3.85^{kW}
OUTPUT

85%
EFFICIENCY



Chrome Half Trim
with Clifton Fret

Trueflame Full Depth Convector Clifton

Traditional design with reliable performance.

Features

- Beautifully traditional gas inset fire
- Choice of colours and finishes
- Fantastic Fireslide control
- Coal effect fuel bed for added authenticity

Dimensions (H x W x D) mm

Full Trim - 621 x 522 x 235

Half Trim - 610 x 500 x 235

Colour

Brass

Chrome

Full Trim

103779BS

103779CP

Half Trim

103780BS

103780CP

Clifton Fret Code

103787BS

103787CP



Brick
Chimney



Pre-Fab
Flue



Slide
Control



Coals



4^{kW}
OUTPUT

64%
EFFICIENCY



109940PG Pale Gold

Excelsior Slimline High Efficiency

This slimline glass fronted inset fire provides the illusion of a full flame while retaining high energy efficiency. It's the ideal choice when energy efficiency is a key priority within limited space.

Features

- Fireslide control
- Glass fronted
- Radiant and convected heat
- Available in choice of two finishes

3.1^{kW}
OUTPUT

80%
EFFICIENCY

Code	Dimensions (H x W x D) mm	Colour Option
109940BN	636 x 518 x 79	Black Nickel
109940PG	636 x 518 x 79	Pale Gold



Brick Chimney



Pre-Fab Flue



Pre-Cast Flue



Slide Control



Coals



143420BS Brass

Alton Dimension Inset

The Dimension series utilises Valor's Dimension technology - combining classic features with a truly believable flame effect created by a holographic fuel bed. Providing up to 1.35kW heat output with a choice of heat controls, the Alton boasts 100% efficiency and comes complete with remote control for easy operation.

Features

- 1.35kW fan heater
- Remote control
- Patented Dimension flame effect
- Coal effect fuel bed
- Choice of finishes

Code	Dimensions (H x W x D) mm	Colour Option
143420BS	612 x 505 x 70	Brass
143420CP	612 x 505 x 70	Chrome



Remote Control



Coals



1.35^{kW}
OUTPUT

100%
EFFICIENCY



143421CP Chrome

Bauhaus Dimension Inset

The Dimension series utilises Valor's Dimension technology - combining classic features with a truly believable flame effect created by a holographic fuel bed. Providing up to 1.35kW heat output with a choice of heat controls, the Bauhaus boasts 100% efficiency and comes complete with remote control for easy operation.

Features

- 1.35kW fan heater
- Remote control
- Patented Dimension flame effect
- Coal effect fuel bed
- Choice of finishes

Code	Dimensions (H x W x D) mm	Colour Option
143421BS	612 x 505 x 70	Brass
143421CP	612 x 505 x 70	Chrome



Remote Control



Coals



1.35^{kW}
OUTPUT

100%
EFFICIENCY



143422BS Brass

Clifton Dimension Inset

The Dimension series utilises Valor's Dimension technology - combining classic features with a truly believable flame effect created by a holographic fuel bed. Providing up to 1.35kW heat output with a choice of heat controls, the Clifton boasts 100% efficiency and comes complete with remote control for easy operation.

Features

- 1.35kW fan heater
- Remote control
- Patented Dimension flame effect
- Coal effect fuel bed
- Choice of finishes

Code	Dimensions (H x W x D) mm	Colour Option
143422BS	612 x 505 x 70	Brass
143422CP	612 x 505 x 70	Chrome



Remote Control



Coals



1.35
kW
OUTPUT

100%
EFFICIENCY



143414PG Black Nickel

Excelsior Dimension Inset

The Dimension series utilises Valor's Dimension technology - combining classic features with a truly believable flame effect created by a holographic fuel bed. Providing up to 1.35kW heat output with a choice of heat controls, the Excelsior boasts 100% efficiency and comes complete with remote control for easy operation.

Features

- 1.35kW fan heater
- Remote control
- Patented Dimension flame effect
- Coal effect fuel bed
- Choice of finishes

Code	Dimensions (H x W x D) mm	Colour Option
143414BN	636 x 518 x 70	Black Nickel
143414PG	636 x 518 x 70	Pale Gold



Remote Control



Coals



1.35
kW
OUTPUT

100%
EFFICIENCY



143415BN Pale Gold

Masquerade Dimension Inset

The Dimension series utilises Valor's Dimension technology - combining classic features with a truly believable flame effect created by a holographic fuel bed. Providing up to 1.35kW heat output with a choice of heat controls, the Masquerade boasts 100% efficiency and comes complete with remote control for easy operation.

Features

- 1.35kW fan heater
- Remote control
- Patented Dimension flame effect
- Coal effect fuel bed
- Choice of finishes

Code	Dimensions (H x W x D) mm	Colour Option
143415BN	636 x 518 x 70	Black Nickel
143415PG	636 x 518 x 70	Pale Gold



Remote Control



Coals



1.35
kW
OUTPUT

100%
EFFICIENCY



143412SC Silver/Chrome

Petrus Dimension Inset

The Dimension series utilises Valor's Dimension technology - combining classic features with a truly believable flame effect created by a holographic fuel bed. Providing up to 1.35kW heat output with a choice of heat controls, the Petrus boasts 100% efficiency and comes complete with remote control for easy operation.

Features

- 1.35kW fan heater
- Remote control
- Patented Dimension flame effect
- Coal effect fuel bed
- Choice of finishes

Code	Dimensions (H x W x D) mm	Colour Option
143412BC	636 x 518 x 70	Black Chrome
143412SC	600 x 522 x 254	Silver/Chrome



Remote Control



Coals



1.35^{kW}
OUTPUT

100%
EFFICIENCY



109924PR Pewter

Classica Full Depth High Efficiency

This glass fronted inset fire provides a convincing flame while retaining high energy efficiency. It's the ideal choice when energy efficiency is a key priority.

Features

- Fireslide control
- Glass fronted
- Radiant and convected heat

Code	Dimensions (H x W x D) mm	Colour Option
109924PR	631 x 540 x 186	Pewter



Brick Chimney



Pre-Fab Flue



Slide Control



Coals



3.85^{kW}
OUTPUT

85%
EFFICIENCY



109927BN Black Nickel

Excelsior Full Depth Convector

This open fronted inset fire promises the flame realism of a solid fuel fire. It's the ideal choice when heat distribution is a key priority as it offers a mix of radiant and convected heat.

Features

- Fireslide control
- Open fronted
- Radiant and convected heat
- Available in choice of two finishes

Code	Dimensions (H x W x D) mm	Colour Option
109927BN	636 x 518 x 235	Black Nickel
109927PG	636 x 518 x 235	Pale Gold



Brick Chimney



Pre-Fab Flue



Slide Control



Coals



4^{kW}
OUTPUT

64%
EFFICIENCY



109928PG Pale Gold

Masquerade Full Depth Convectector

This open fronted inset fire promises the flame realism of a solid fuel fire – thanks to its deep, realistic coal effect fuel bed and warm glow. It's the ideal choice when heat distribution is a key priority as it offers a mix of radiant and convected heat.

Features

- Brick chimney, and pre-fabricated compatible
- Open fronted
- Radiant and convected heat
- Available in choice of two finishes

Code	Dimensions (H x W x D) mm	Colour Option
109928BN	636 x 518 x 235	Black Nickel
109928PG	636 x 518 x 235	Pale Gold



Brick Chimney



Pre-Fab Flue



Slide Control



Coals



4^{kW}
OUTPUT

64%
EFFICIENCY



109925PG Pale Gold

Excelsior Full Depth High Efficiency

This glass fronted inset fire provides a convincing flame while retaining high energy efficiency. It's the ideal choice when energy efficiency is a key priority.

Features

- Fireslide control
- Glass fronted
- Radiant and convected heat
- Available in choice of two finishes

Code	Dimensions (H x W x D) mm	Colour Option
109925BN	636 x 518 x 186	Black Nickel
109925PG	636 x 518 x 186	Pale Gold



Brick Chimney



Pre-Fab Flue



Slide Control



Coals



3.85^{kW}
OUTPUT

85%
EFFICIENCY



109942BN Black Nickel

Excelsior Slimline convectector

The Excelsior slimline convectector gas fire allows modern homes with shallow flues to enjoy the classic looks of the inset fire while meeting their building's requirements. The fire comes in a choice of finishes to suit your décor and has Fireslide manual control for easy operation.

Features

- Fireslide control
- Open fronted
- Choice of two finishes
- Radiant and convected heat

Code	Dimensions (H x W x D) mm	Colour Option
109942BN	636 x 518 x 135	Black Nickel
109942PG	636 x 518 x 135	Pale Gold



Brick Chimney



Pre-Fab Flue



Pre-Cast Flue



Slide Control



Coals



3.3^{kW}
OUTPUT

61%
EFFICIENCY



109943PG Pale Gold

Masquerade Slimline Convector

The Masquerade slimline convector gas fire allows modern homes with shallow flues to enjoy the classic looks of the inset fire, with ample heat output and nett efficiency, while meeting their building's requirements.

Features

- Fireslide control
- Open fronted
- Choice of two finishes
- Radiant and convected heat

Code	Dimensions (H x W x D) mm	Colour Option
109943BN	636 x 518 x 135	Black Nickel
109943PG	636 x 518 x 135	Pale Gold



Brick Chimney



Pre-Fab Flue



Pre-Cast Flue



Slide Control



Coals



3.3 kW
OUTPUT

61%
EFFICIENCY



109926BN Black Nickel

Masquerade Full Depth High Efficiency

This glass fronted inset fire provides the illusion of a full flame while retaining high energy efficiency. It's the ideal choice when energy efficiency is a key priority, as less gas is wasted in escaping the fire.

Features

- Fireslide control
- Glass fronted
- Choice of two finishes
- Radiant and convected heat

Code	Dimensions (H x W x D) mm	Colour Option
109926BN	636 x 518 x 186	Black Nickel
109926PG	636 x 518 x 186	Pale Gold



Brick Chimney



Pre-Fab Flue



Slide Control



Coals



3.85 kW
OUTPUT

85%
EFFICIENCY



109941BN Black Nickel

Masquerade Slimline High Efficiency

This slimline glass fronted inset fire provides the illusion of a full flame while retaining high energy efficiency. It's the ideal choice when energy efficiency is a key priority within limited space, as less gas is wasted in escaping the fire.

Features

- Fireslide control
- Brick chimney, pre-cast and pre-fabricated compatible

Code	Dimensions (H x W x D) mm	Colour Option
109941BN	636 x 518 x 79	Black Nickel
109941PG	636 x 518 x 79	Pale Gold



Brick Chimney



Pre-Fab Flue



Pre-Cast Flue



Slide Control



Coals



3.1 kW
OUTPUT

80%
EFFICIENCY



109944BN Black Nickel

Excelsior Balanced Flue

This glass fronted inset fire provides a convincing flame while retaining high energy efficiency. It's the ideal choice when energy efficiency is a key priority, as less gas is wasted in escaping the fire. It also offers radiant heat, meaning you feel heat directly from the fire.

Features

- Balanced flue (no chimney requirement)
- Side touch control
- Glass fronted
- Radiant and convected heat
- Available in choice of three colours
- Spacer kit available

Code	Dimensions (H x W x D) mm	Colour Option
109944BN	636 x 518 x 110	Black Nickel
109944PG	636 x 518 x 110	Pale Gold



Balanced Flue



Touch Control



Coals



2.8
kW
OUTPUT

84%
EFFICIENCY



109945PG Pale Gold

Masquerade Balanced Flue

This glass fronted inset fire provides a convincing flame while retaining high energy efficiency. It's the ideal choice when energy efficiency is a key priority, as less gas is wasted in escaping the fire. It also offers radiant heat, meaning you feel heat directly from the fire.

Features

- Balanced flue (no chimney requirement)
- Side touch control
- Glass fronted
- Radiant and convected heat
- Available in choice of three colours
- Spacer kit available

Code	Dimensions (H x W x D) mm	Colour Option
109945BN	636 x 518 x 110	Black Nickel
109945PG	636 x 518 x 110	Pale Gold



Balanced Flue



Touch Control



Coals



2.8
kW
OUTPUT

84%
EFFICIENCY



109946BC Black/Chrome

Helmsley

The Helmsley Radiant Outset Gas Fire has a traditional gas fire look in a black finish with a striking canopy of black with chrome highlights. The Helmsley gas fire has a grated front with manual control and electronic ignition for ease of use.

Features

- Electronic top control
- Duplex burner for added control
- Outset radiant fire
- Radiant and convected heat
- Pagoda styled hood with chrome finishing
- Can be wall or hearth mounted

Code	Dimensions (H x W x D) mm	Colour Option
109946BC	630 x 657 x 225	Black/Chrome



Brick Chimney



Pre-Fab Flue



Pre-Cast Flue



Electronic Control



Radiant



4
kW
OUTPUT

80%
EFFICIENCY



Nest Protect

**It's time to expect more
from your smoke alarm.**

The smart smoke and carbon monoxide detector that
thinks, speaks, and alerts your phone.



Get alerts on your phone.

Google Nest Protect sends an alert to your phone when something's wrong at home.

Tells you what and where.

Google Nest Protect speaks up if there's smoke or CO and tells you where it is, so you know what to do.

Sees the CO you can't.

Carbon monoxide is an invisible, poisonous gas. Google Nest Protect tells you where it's hiding.



VALOR INSPIRE APPROVED CENTRES

The
INSPIRE
COLLECTION



Inspire 1000 Fireslide with edge trim in anthracite, mirrored glass liner and oak logs



Patented
Technology



Unrivalled
Design



Innovative
Duo Burner

 **valor**centre

Valor Inspire Range

The Inspire Collection is exclusively available only through the **Valor Centre network** and only to approved retailers. The collection offers a choice of **five** high quality gas fires which all bring a touch of luxury into customer's living rooms. Customers can choose from **Inspire 400, 500, 600, 800 and 1000 models**, each with a wide range of design options, innovations, performance features and easy installation and servicing.



CODE	DESCRIPTION	CODE	DESCRIPTION
Engine		Trims	
400		4 Sided	
110102	Remote Luminaire Clear Vision	110068	Frameless Kit*
110101	Fireslide Luminaire Clear Vision	110067BK	Grande Black
110100	Remote Luminaire	110067AN	Grande Anthracite
110096	Fireslide Luminaire	110067BC	Grande Brushed Chrome
500		110067CP	Grande Chrome
110106	Remote Clear Vision	110066BK	Edge Black
110105	Fireslide Clear Vision LPG	110066AN	Edge Anthracite
110104	Fireslide Clear Vision	110066BC	Edge Brushed Chrome
110061	Remote	110066CP	Edge Chrome
110103	Fireslide LPG	Surround Sets (Individual)	
110060	Fireslide	400	
600		110099	Atlanta Suite
110108	Remote Clear Vision	400/500	
110107	Fireslide Clear Vision	110078	Vicenza Suite
110063	Remote	110077	Palermo Suite
110062	Fireslide	600	
800		110080	Verona Suite
110109	Fireslide Clear Vision	110079	Napoli Suite
110065	Remote	800	
110064	Fireslide	110082	Abruzzo
1000		110081	Messina Suite
110112	Remote Clear Vision	Accessories	
110111	Fireslide Clear Vision	Gatherhood Connector Kit	
110092	Remote	110095	800 & 1000
110091	Fireslide	110094	400 & 600
Trims		110093	500
3 Sided**		Liners	
110096BL	Grande Black	110069BK	Black
110096GA	Grande Anthracite	110069VE	Vermiculite
110096GB	Grande Brushed Chrome	110069MG	Mirrored Glass
110096GC	Grande Chrome	Logs	
110096BK	Edge Black	110097	Campfire**
110096AN	Edge Anthracite	110070	Rustic*
110096BC	Edge Brushed Chrome	110083	Oak*
110096CP	Edge Chrome	Stove Casing Top Flue	
* not available on the 400 engine		110136	Large
** Available on the 400 engine only		110135	Medium

The 500, 600 800 and 1000 models are each available with a choice of liners, logs and trim effect. Available with two fuel beds, five ceramic back liners and two trim designs, each in a choice of four colours.

The 500, 600 and 800 models also come with a choice of two suites for each model. Inspire gas fires from Valor can even be purchased with a frameless kit which requires no trim.

The 400 is the first inset model in the Inspire range, offering a choice of three back liners, two trims each available in three sided or four sided designs as well as a choice of three luxurious suites.

For the ultimate in convenience all fires in the Inspire collection also come with Valor's unique Fireslide control, a first of its kind for premium gas fires. Plus the 500, 600, 800 and 1000 models are also support the option for an advanced remote control which offer a wider host of features.





Inspire 400 Series

Product features and benefits

- Max heat output 4.0kW
- Min heat output 1.1kW
- 84.5% efficiency
- Remote or Fireslide control
- Natural gas
- Choice of standard or Clear Vision anti-reflective glass
- Luminaire LED electric underbed glow, creating the illusion of burning embers for a warming glow that can be enjoyed with or without heat
- Can be fitted into wall or as part of suite
- Choice of liner & trim options



Luminaire LED Technology



Fireslide control chrome



Inspire 500 Series

Product features and benefits

- Max heat output 4.0kW
- Min heat output 1.8kW
- 80% efficiency
- Remote or Fireslide control
- Advanced burner technology
- Can be fitted into wall or as part of suite
- Choice of liner & trim options
- Frameless kit available
- Choice of oak or rustic logs
- Natural Gas. LPG option also available on Fireslide model
- Realistic flame picture
- Choice of standard or Clear Vision anti-reflective glass



Fireslide or remote control



Luminaire LED Technology

Inspire 600 Series

Product features and benefits

- Max heat output 4.0kW
- Min heat output 1.5kW
- 75% efficiency
- Remote or Fireslide control
- Dual burner technology allows for one or two burners to be lit depending on whether you want a gentle or 'roaring' flame

- Can be fitted into wall or as part of suite
- Choice of liner & trim options
- Frameless kit available
- Choice of oak or rustic logs
- Natural gas
- Realistic flame picture
- Choice of standard or Clear Vision anti-reflective glass



Fireslide or remote control



Inspire 800 Series

Product features and benefits

- Max heat output 4.6kW
- Min heat output 1.6kW
- 80% efficiency
- Remote or Fireslide control
- Dual burner technology allows for one one or two burners to be lit depending on whether you want a gentle or 'roaring' flame

- Can be fitted into wall or as part of suite
- Choice of liner & trim options
- Frameless kit available
- Choice of oak or rustic logs
- Natural gas
- Realistic flame picture
- Choice of standard or Clear Vision anti-reflective glass



Fireslide or remote control





Inspire 1000 Fireslide

Product features and benefits

- Max heat output 4.9kW
- Min heat output 1.9kW - Fireslide model
- 78% efficiency
- Remote or Fireslide control
- Dual burner technology allows for one or two burners to be lit depending on whether you want a gentle or 'roaring' flame
- Can be fitted into wall or as part of suite
- Choice of liner & trim options
- Frameless kit available
- Choice of oak or rustic logs
- Natural gas
- Realistic flame picture
- Choice of standard or Clear Vision anti-reflective glass



Fireslide control chrome



Inspire 1000 Remote

Product features and benefits

- Max heat output 4.9kW
- Min heat output 1.7kW - Remote model
- 78% efficiency
- Remote or Fireslide control
- Dual burner technology allows for one or two burners to be lit depending on whether you want a gentle or 'roaring' flame
- Can be fitted into wall or as part of suite
- Choice of liner & trim options
- Frameless kit available
- Choice of oak or rustic logs
- Natural gas
- Realistic flame picture
- Choice of standard or Clear Vision anti-reflective glass



Remote control



Trim & Liner Options



Edge Trims (Frameless Kit: A9)



Chrome
Code: A1



Brushed Chrome
Code: A2



Anthracite
Code: A3



Black
Code: A4



Chrome
Code: A5



Brushed Chrome
Code: A6



Anthracite
Code: A7



Black
Code: A8

Note: The Inspire 400 model choice of a 3 sided or 4 sided trim available in the above design and finish.

Liners



Mirrored Glass Liner
Code: B1
Log bed code: Oak - C1 | Rustic - C2



Vermiculite Liner
Code: B2

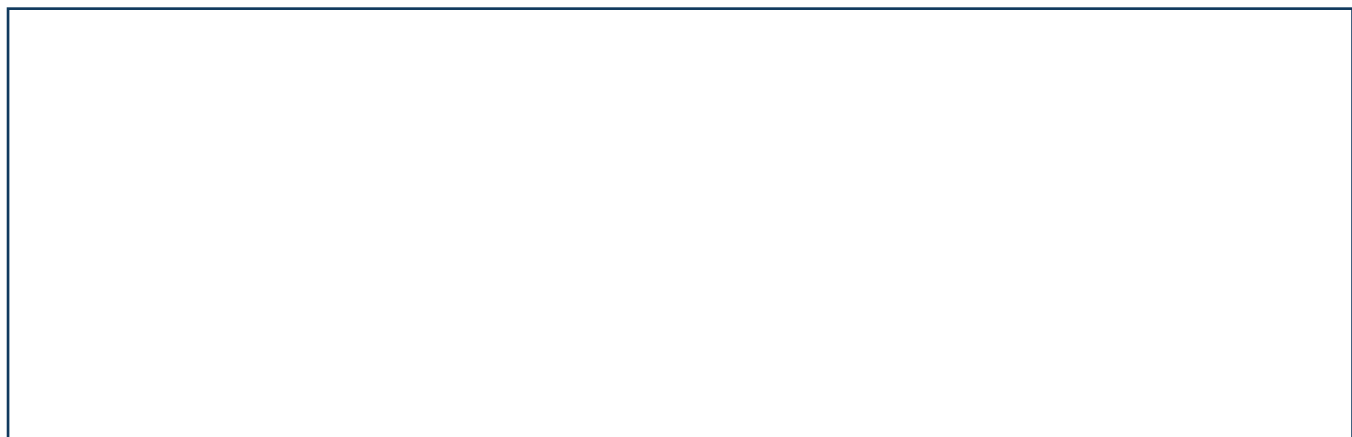


Black Liner
Code: B3

Note: The inspire 400 model is only available with a choice of black, mirrored glass & vermiculite.



WE SIMPLY DELIVER MORE



Head Office: Primaflow F&P, Eldon Way, Crick, Northamptonshire NN6 7SL

Registered in England No 2662075. Registered Office: Votec House, Hambridge Lane, Newbury, RG14 5TN.

© Primaflow F&P - No part of this publication may be reproduced or utilised in any form or by any means, electronic or mechanical, without prior permission from the publishers. Every care is taken to ensure that the information quoted in this brochure is correct at the time of going to press. E & OE. Copies of our full terms and conditions are available from our Head Office.