



WE SIMPLY DELIVER MORE

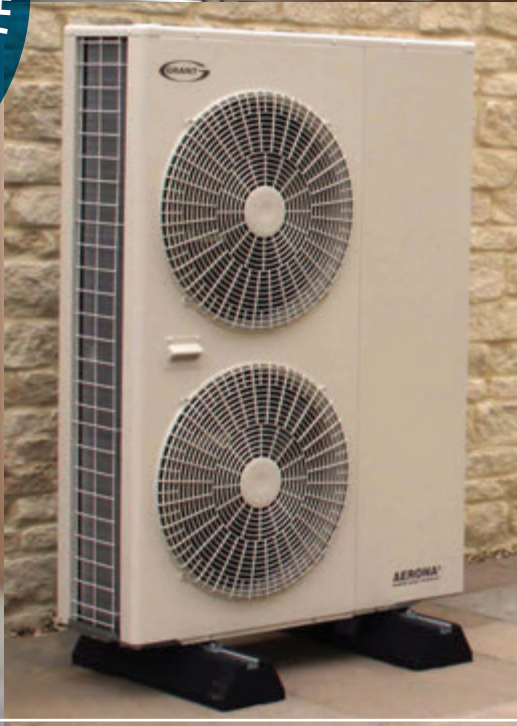
The UK's biggest plumbing, heating and bathroom wholesaler

RENEWABLES

PRODUCT GUIDE



DELIVERING MORE • UK •
ENERGY EFFICIENT ENVIRONMENT FOCUSED PRODUCTS
NATIONWIDE COVERAGE ACROSS THE



Renewable Market Overview: Energy Transition



WHAT'S DRIVING THE CHANGES TO RENEWABLE ENERGY

The UK Government has set a target that all new heating systems installed in UK homes be low carbon or supporting new technologies (like hydrogen ready boilers) by 2035.

Behind transport, buildings are the second largest source of emissions in the UK.

With this ever increasing focus on reducing our carbon footprint, and with the Government's 'Net Zero' carbon target by 2050; new products will continue to emerge and offer greener options for homeowners and installers to choose from.

The evolution of new products in the UK is unlikely to be a quick one. The UK market will still rely on boilers for the lifetime of any fitted today and beyond.

However, initially in the new build and social housing sectors, these new technologies will become more readily available as legislation and technology evolve to support the reduced emissions targets.



Whilst the facts are still unclear some common thinking is developing on where the new technologies are best placed to support the renewables roll out:

- Heat pumps, whilst the favoured technology, will take a number of years to get close to the Government's 600,000 installation / annual target. And the grant funding available only supports 90,000 in total over 3 years. (We would anticipate the capacity to build up to 100,000 ASHP units being sold within our one off sector over the next 3 or 4 years).

Some observations on the new technologies include:

- Hydrogen 20% mix would be a useful first step towards the overall emission reduction target.
- Legislation will drive the market, and is being set in stages over the next few years.

- Gas boilers will continue to make up the majority of the one off / replacement sector in the short to medium term, but in the knowledge that most are already 20% hydrogen ready. Then as the boiler technology develops we will see the transition to 100% hydrogen ready boilers, albeit operating on natural gas to start with until the infrastructure is upgraded.
- "Hydrogen ready" models will allow consumers to purchase with some peace of mind. And ensure they can support the Hydrogen take up assuming the infrastructure is provided.
- The final UK marketplace is likely to be a broad mix of all the available technologies as far as anyone can sensibly forecast at this time.

CONTENTS

| | |
|--|----|
| Hydrogen | 5 |
| Heat Pumps | 6 |
| Electric Boilers | 14 |
| Solar Products | 16 |
| Heat Recovery Units, Underfloor Heating and Air Conditioning | 20 |
| Heat Networks | 22 |



| | Hydrogen 20% | Hydrogen 100% | Heat Pumps | Heat Pump Cylinders | Electric Boilers | Solar | Solar Cylinders | Air Conditioning | HIU (Heat Networks) | Electric Underfloor Heating | HVO (Vegetable Oil Conversion) | Heat Recovery Units |
|---|--------------|---------------|------------|---------------------|------------------|-------|-----------------|------------------|---------------------|-----------------------------|--------------------------------|---------------------|
| Baxi | ✓ | ◆ | ✓ | ✓ | | | | | | | | ✓ |
| HeatraeSadia | | | | ✓ | ✓ | | ✓ | | | | | ✓ |
| Glowworm | ✓ | | | | | | | | | | | |
| Grant | | | ✓ | ✓ | | ✓ | ✓ | | | | ✓ | |
| Ideal | ✓ | ◆ | ✓ | ✓ | | | | | ✓ | | | |
| Vaillant | ✓ | ◆ | ✓ | ✓ | | ✓ | ✓ | | | | | |
| Viessmann | ✓ | ◆ | ✓ | | ✓ | | | | | ✓ | | |
| Worcester | ✓ | ◆ | ✓ | ✓ | | ✓ | ✓ | ✓ | ✓ | | | |
| Gledhill | | | | ✓ | | | ✓ | | | | | |
| ✓ Available ◆ In Development / Testing | | | | | | | | | | | | |

Hydrogen:

A COLOURLESS, ODOURLESS, HIGHLY FLAMMABLE GAS

With reference to heating, hydrogen is viewed as a replacement for natural gas, either completely or as a partial replacement at a 20% blend.

20% HYDROGEN:

The UK Government is working with industry to assess the safety, technical feasibility, and cost effectiveness of mixing 20% hydrogen into the existing gas supply.

Boilers are now being marked as “20% hydrogen blend” ready to signify that when the Government starts to add hydrogen to the main gas supply, they will work as intended, no parts or conversions will be needed; This gives homeowners and installers security that the boiler they have installed today will last into the future as the rollout of 20% hydrogen isn't expected to begin until at least 2028.

As the majority of modern boilers are able to run on a blend of 20% hydrogen they are excluded from this document.

This technology feels like a quick win. By adding 20% hydrogen to natural gas, traditional boilers can take a step to become more environmentally friendly, and they predict this could deliver a 7% emissions reduction on natural gas and by using a blend of natural gas and 20% hydrogen the UK could save six million tonnes of carbon dioxide a year.

However, testing is currently underway to check the capabilities and safety of the current infrastructure to handle this move so it is not guaranteed.



100% HYDROGEN:

A hydrogen-ready boiler is a gas-fired heating boiler which is capable of burning either natural gas or pure (100%) hydrogen. So far these boilers are still in testing and development and unlikely to hit the mass market for a few years. Why is the Government not backing a 100% Hydrogen first approach?

There are a few reasons, firstly not all Hydrogen is green:

Hydrogen, in itself, is a clean fuel. Manufacturing hydrogen fuel, however, is energy-intensive and can have carbon byproducts.

In addition there are Safety issues and infrastructure issues (relaying pipes to ensure leak proof supply) which leads to the conclusion it could take years to reassure the market that Hydrogen is safe. That said, new build communities with bespoke and dedicated infrastructure may lend themselves well to a safe and secure Hydrogen solution.

Heat Pumps



A heat pump is a relatively new technology in the UK although it's widely used in Scandinavia and many parts of Europe where there is an abundance of renewably sourced electricity.

These pumps are available in two main types, Air & Ground. The UK domestic market is likely to dominate on air sourced heat pumps but in both cases the pump takes natural heat from the surrounding air or ground and converts this natural heat into usable heating via a heat exchanger.

Heat pumps run at lower temperatures than gas boilers (50 - 55°C as opposed to 75°C+) and this has a number of implications when replacing a gas boiler for domestic use.

- A cylinder is needed to store and further heat the water for hot water use. ASHP cylinders are more powerful than standard cylinders and tend to have dual elements to allow for the temperature rise needed to serve the hot water element in the household.
- Radiators will need to be extended or replaced to ensure sufficient heating in the household (or underfloor heating will be needed to supplement or replace radiator capacity existing).
- Electric boilers may be used in addition to ASHP to support hot water supply in domestic use and these are known as "Hybrid" solutions - these are further explained below.

- A small number of manufacturers have, or are just about to release a second generation of ASHP working at 75°C and reducing the reliance on additional power for hot water/radiator upgrades.

The UK Government is taking a heat pump first approach to reducing Carbon emissions from heating; Pledging £60m to a heat pump innovation fund (90,000 total installations over 3 years vs 600,000 annual target).

Types of heat pumps:

ASHP - Air source heat pumps

- Split units
- Monoblock

GSHP - Ground source heat pumps

Air source heat pumps

Air source heat pumps offer a choice of two systems: air to air or air to water, both offering significant savings compared with a conventional heating system.

The air source heat pumps convert the free and sustainable latent energy in the air into heat, delivering green, low-cost, energy-saving heating and hot water all year round.

Air source heat pumps are intended to be the sole source of heating and hot water for the home. Air to water heat pumps use the constant energy available in the air with a refrigerant circuit which allows the temperature to be boosted to a useful level for heating or hot water for the home. An air to air heat pump is an all-in-one heating and cooling system that is designed to provide year-round comfort.



Defining the different types of systems

The terms 'split' and 'monobloc' refer to how the system is required to be set up in a home.

A Monobloc heat pump is an all in one solution, that is similar to a combi boiler, where all of the components are inside a single unit. However a monobloc heat pump sits outside the home unlike a boiler.

A Monobloc heat pump would still require a hot water cylinder to be installed inside the home, however the complete installation does not require F-Gas certification.

Split units set-up

Heat extractor | Heat exchanger | Hot water cylinder | Optional buffer tank

Monobloc set-up

External heat extractor & heat exchanger | Hot water cylinder | Optional buffer tank.

Most UK available ASHP are based on a split heat pump system, which is a mix of internal and external units. The external unit holds the refrigerant and heat exchanger and an internal unit is installed inside the home.

With a Split system the hot water cylinder can be an additional item or it can be integrated into the internal unit itself.

A split designed heat pump system is generally a more complicated installation, and it requires F-Gas certification to install.

Ground source heat pumps:

Ground source heat pumps allow the consumer to take advantage of renewable and sustainable energy. Heat pumps make use of the energy from the sun which is absorbed by the earth. The energy below the surface can then be extracted by the heat pump.

Heat pumps use the constant energy available in the ground with a refrigerant circuit to allow the temperatures to be boosted to a useful level for the provision of heating or hot water for the home.

Heat pumps are intended to be the sole source of heating and hot water production for the home giving the homeowner the option of removing the existing heat source from the property and in most cases, making the heat pump the only source.

Hybrid systems

A hybrid system is a combination of two or more technologies generating heat to provide heating and hot water to the home or building.

The most common hybrid system design is an Air source heat pump and a boiler. Typically this would be a natural gas or LPG boiler, to provide additional heat output and maximising the efficiency of both the boiler and the heat pump.

Heat Pumps Product Range

BAXI



Air Source Heat Pump

| CODE | DESCRIPTION |
|----------|------------------------|
| 10356501 | Assure ODU 4.5kW Split |
| 10356601 | Assure ODU 6kW Split |
| 10356701 | Assure ODU 8kW Split |
| 10356801 | Assure IDU3WH 4.5-8kW |

Heat Pump Accessories

| CODE | DESCRIPTION |
|----------|-------------------------------------|
| 10356201 | Reassurance Pack For Split 4.5 & 6 |
| 10356301 | Reassurance Pack For Split 8kW |
| 10356401 | Comfort Pack For 4.5 & 6kW |
| 10357701 | Reassurance Pack For Monobloc |
| 10357801 | Reassurance Pack For Monobloc |
| 10357901 | Comfort Pack For Monobloc 57 & 9kW |
| 10358001 | Comfort Pack For Monobloc 12 & 16kW |



Cylinders

| CODE | DESCRIPTION |
|----------|--------------------------------|
| 10357401 | Assure 210 Litre ASHP Cylinder |
| 10357501 | Assure 250 Litre ASHP Cylinder |
| 10357601 | Assure 300 Litre ASHP Cylinder |

Air Source Heat Pump

| CODE | DESCRIPTION |
|----------|----------------------|
| 10356901 | Assure Monobloc 5kW |
| 10357001 | Assure Monobloc 7kW |
| 10357101 | Assure Monobloc 9kW |
| 10357201 | Assure Monobloc 12kW |
| 10357301 | Assure Monobloc 16kW |

GRANT^{UK}



Air Source Heat Pumps

| CODE | DESCRIPTION |
|----------|---|
| 107140 | Aerona ³ 6kW R32 Inverter Driven Air Source Heat Pump |
| 107141 | Aerona ³ 10kW R32 Inverter Driven Air Source Heat Pump |
| 10661001 | Aerona ³ 13kW R32 Inverter Driven Air Source Heat Pump |
| 107142 | Aerona ³ 17kW R32 Inverter Driven Air Source Heat Pump |

Heat pump accessories

| CODE | DESCRIPTION |
|----------|---|
| 10663302 | Aerona ³ Blygold Coating Treatment (for HPID6R32, HPID10R32) |
| 10663303 | Aerona ³ Blygold Coating Treatment (for HPID13R32, HPID17R32) |
| 10661301 | Aerona ³ wall mounted electricity meter |
| 10663304 | Aerona ³ wiring centre |
| 107062 | Automatic domestic hot water boost kit 2 (Timed) |
| 10661501 | AC isolator 32amp |
| 107143 | Aerona ³ Flexi-foot Kit (2 x 600mm) + Fixings |
| 107147 | Aerona ³ heat meter kit (compatible with HPID13R32, HPID17R32 & VortexAir) |
| 10661401 | Aerona ³ heat meter kit (compatible with HPID6R32 & HPID10R32) |
| 107144 | Aerona ³ Through Wall Insulation Kit to fit 22-28mm Flexi Hose |

Heat pump accessories

| CODE | DESCRIPTION |
|----------|---|
| 10663305 | System combined volumiser/low loss header (70kW) Kit |
| 10663306 | Domestic hot water programmer |
| 10663307 | Heat pump wiring interface |
| 10663308 | 28mm 3-Port diverter valve |
| 10663309 | 10k Ohm cylinder sensor |
| 10661801 | Aerona ³ heat pump wall bracket (M- Type 90-120kg) |
| 10661101 | Aerona ³ Hot Water Priority Relay |
| 10661201 | Aerona ³ Hot Water Priority Relay (2 CH Zone) |
| 10663313 | Inhibitor/ anti-freeze 25 litres |

Heat Pumps Product Range



CODE DESCRIPTION

Heat Pump Installation Kits

| | |
|----------|--|
| 10663310 | Aerona ³ installation pack A - S-Plan for non pre-plumbed cylinders |
| 10663311 | Aerona ³ installation pack B - S-Plan for pre-plumbed cylinders |
| 10663312 | Aerona ³ installation pack C - Direct for non pre-plumbed cylinders |

CODE DESCRIPTION

Heat Pump Sealed System Kits

| | |
|----------|--|
| 106992 | Aerona ³ 12 litre sealed system kit |
| 107072 | Aerona ³ 18 litre sealed system kit |
| 10661901 | Aerona ³ 50 litre sealed system kit |

CODE DESCRIPTION

Hybrid

| | |
|----------|--|
| 107146 | VortexAir 21/26kW Blue Flame Oil Boiler and 17kW Heat Pump Hybrid inc. EZ90BFKIT |
| 107145 | VortexAir 15/21kW Blue Flame Oil Boiler and 17kW Heat Pump Hybrid inc. EZ90BFKIT |
| 107148 | VortexAir DIN rail mounted electricity meter |
| 10663314 | VortexAir 15/21kW Blue Flame Oil Boiler |
| 10663315 | VortexAir 21/26kW Blue Flame Oil Boiler |



CODE DESCRIPTION

Cylinders

| | |
|----------|---------------------------|
| 25838511 | SL Plus HP 180 2.5SQM EE |
| 25838513 | SL Plus HP 180 Slim EE UV |
| 25838514 | SL Plus HP 210HP3SQM EE |
| 25838516 | SL Plus HP 210 Slim EE UV |
| 25838517 | SL Plus HP 250HP3SQM EE |
| 25838519 | SL Plus HP 300HP3SQM EE |
| 25838521 | SL Plus HP 400 4SQM EE |

CODE DESCRIPTION

Air Source Heat Pump - Accessories

| | |
|----------|--|
| 10285114 | Rubber Antivibration Feet 600mm (x2) |
| 10285115 | Wall hung support 560 mm |
| 10285116 | Navilink A59 INTER |
| 10285117 | Navilink RF Signal Extender |
| 10285118 | Buffer Tank 25ltr |
| 10285119 | Buffer Tank 50ltr |
| 10285120 | High Flow Kit |
| 10285121 | Kit master cascade |
| 10285122 | Kit slave cascade |
| 10285123 | Balancing vessel (decoupling bottle) |
| 10285124 | 2 Zones Kit (extension card included) |
| 10285125 | Condensate collector Extensa R32 ODU |
| 10285126 | Pre-insulated twin refrigerent pipes KM1 5M 1/2"-1/4" |
| 10285127 | Pre-insulated twin refrigerent pipes KM1 7M 1/2"-1/4" |
| 10285128 | Pre-insulated twin refrigerent pipes KM1 10M 1/2"-1/4" |
| 10285129 | Pre-insulated twin refrigerent pipes KM1 25M 1/2"-1/4" |
| 10285130 | Pre-insulated twin refrigerent pipes KM1 5M 5/8"-3/8" |
| 10285131 | Pre-insulated twin refrigerent pipes KM1 7M 5/8"-3/8" |
| 10285132 | Pre-insulated twin refrigerent pipes KM1 10M 5/8"-3/8" |
| 10285133 | Pre-insulated twin refrigerent pipes KM1 25M 5/8"-3/8" |



CODE DESCRIPTION

Air Source Heat Pump

Alfea Extensa

| | |
|----------|---|
| 10285101 | Ideal Alfea Extensa A.I. 5 R32 Heat Pump (ODU&IDU) |
| 10285102 | Ideal Alfea Extensa A.I. 6 R32 Heat Pump (ODU&IDU) |
| 10285103 | Ideal Alfea Extensa A.I. 8 R32 Heat Pump (ODU&IDU) |
| 10285104 | Ideal Alfea Extensa A.I. 10 R32 Heat Pump (ODU&IDU) |

Alfea Excellia

| | |
|----------|--|
| 10285105 | Ideal Alfea Excellia A.I. 11kW Heat Pump (ODU&IDU) |
| 10285106 | Ideal Alfea Excellia A.I. 14 Heat Pump (ODU&IDU) |
| 10285107 | Ideal Alfea Excellia A.I. 16 TRI Heat Pump (ODU&IDU) |

CODE DESCRIPTION

Heat Pump Cylinders

| | |
|----------|---------------------------------------|
| 10285108 | Ideal 180 Heat Pump DHW Cylinder |
| 10285109 | Ideal 180 Heat Pump DHW Cylinder Slim |
| 10285110 | Ideal 210 Heat Pump DHW Cylinder |
| 10285111 | Ideal 210 Heat Pump DHW Cylinder Slim |
| 10285112 | Ideal 250 Heat Pump DHW Cylinder |
| 10285113 | Ideal 300 Heat Pump DHW Cylinder |

Heat Pumps Product Range



| CODE | DESCRIPTION |
|-----------------------------|--------------------------------------|
| Air Source Heat Pump | |
| AroTHERM | |
| 105182 | AroTHERM 5kW Air To Water Heat Pump |
| 105148 | AroTHERM 5kW Hybrid |
| 105147 | AroTHERM 8kW Air To Water Heat Pump |
| 105158 | AroTHERM 11kW Air To Water Heat Pump |
| 105642 | auroTHERM 11kW Kit |
| 105150 | AroTHERM 15kW Air To Water Heat Pump |

| | |
|----------------------|----------------------|
| AroTHERM plus | |
| 10594801 | AroTHERM plus 3.5 kW |
| 10594901 | AroTHERM plus 5 kW |
| 10595001 | AroTHERM plus 7 kW |
| 10595101 | AroTHERM plus 10 kW |
| 10595201 | AroTHERM plus 12 kW |

| | |
|----------------------------------|---|
| AroTHERM plus + Hydraulic | |
| 10595801 | AroTHERM plus 3.5 kW + Hydraulic Module |
| 10595901 | AroTHERM plus 5 kW + Hydraulic Module |
| 10596001 | AroTHERM plus 7 kW + Hydraulic Module |
| 10596101 | AroTHERM Plus 10 kW + Hydraulic Module |
| 10596201 | AroTHERM Plus 12 kW + Hydraulic Module |

| | |
|-----------------------------|--|
| AroTHERM plus Hybrid | |
| 10596301 | AroTHERM plus 3.5 kW Hybrid |
| 10596801 | AroTHERM plus 3.5 kW Hybrid For Incumbent Boiler |
| 10596401 | AroTHERM plus 5 kW Hybrid |
| 10596901 | AroTHERM plus 5kW Hybrid For Incumbent Boiler |
| 10596501 | AroTHERM plus 7 kW Hybrid |
| 10597001 | AroTHERM plus 7 kW Hybrid For Incumbent Boiler |
| 10596601 | AroTHERM plus 10 kW Hybrid |
| 10597101 | AroTHERM plus 10 kW Hybrid For Incumbent Boiler |
| 10596701 | AroTHERM plus 12 kW Hybrid |
| 10597201 | AroTHERM plus 12 kW Hybrid For Incumbent Boiler |

| CODE | DESCRIPTION |
|-------------------------------|---------------------------------|
| Air Source Heat Pump | |
| AroTHERM plus UniTower | |
| 10595301 | AroTHERM plus 3.5 kW + uniTOWER |
| 10595401 | AroTHERM plus 5 kW + uniTOWER |
| 10595501 | AroTHERM plus 7 kW + uniTOWER |
| 10595601 | AroTHERM plus 10 kW + uniTOWER |
| 10595701 | AroTHERM plus 12 kW + uniTOWER |

| | |
|-----------------------|--------------------|
| AroTHERM Split | |
| 10511901 | AroTHERM 7kW Split |

| | |
|-------------------|--|
| FlexoTHERM | |
| 10598019 | FlexoTHERM Water Source Heat Pump 19kW |

| | |
|--------------------|-----------------|
| Buffer Tank | |
| 10511201 | 45 Litre Buffer |

| | |
|------------------------------|---|
| Heat Pump Accessories | |
| 10545701 | 3 Zone Distribution Manifold |
| 105159 | Heat Exchange Module |
| 105105 | Vailnt aroTRM Heat Exchanger Module |
| 105715 | geoTHERM Brine Concentrate For Ground Loop 8.25 Litre |

| | |
|----------|---|
| 10597501 | uniTOWER Decoupling Module (Large) |
| 10597401 | uniTOWER Decoupling Module (Small) |
| 10518501 | 90 degree Elbow D 160mm |
| 10518701 | aroSTOR Twin Flue Kit WWL 290 |
| 105104 | aroTHERM In-Line 6kW Back Up Heater |
| 10518601 | Insulated Duct D 160mm L 10m |
| 10598001 | Mono HP Connect Kit Straight Pi |
| 10597701 | Mono HP Connect Kit-Ground Install |
| 10597801 | Mono HP Connect Kit-Ground Install Exit |
| 10597901 | Mono HP Connect Kit-Wall Install |
| 10597301 | uniTOWER Connect Kit (HP Circuit) |
| 10597601 | uniTOWER Connection Kit On Wall (UK) |

| CODE | DESCRIPTION |
|------------------------------|---|
| Air Source Heat Pump | |
| Heat Pump Accessories | |
| 105114 | Vailnt 600mm Anti-Vibration Feet (Pr) |
| 10519001 | Small Set Of Rubber Feet |
| 10512001 | Twin Refrigerant Pipes 10m 3/8' to 5/8' |
| 10545601 | VDM20 Pump Group With 6.3m H Mixer |
| 10545902 | VR 32/3 eBUS Coupler |
| 105113 | Vailnt at Pump Flexible Ho 750mm 1 Inch |



| CODE | DESCRIPTION |
|-------------------------------|-------------------------------------|
| Heat Pump Cylinders | |
| Pre-plumbed uniSTOR | |
| 10514901 | Pre-plumbed uniSTOR 200Ltr |
| 10547601 | Pre-plumbed uniSTOR 250Ltr |
| 10545801 | Pre-plumbed uniSTOR 300Ltr |
| 10524001 | Pre-plumbed slimline uniSTOR 150Ltr |
| Standard uniSTOR | |
| 10521701 | Standard uniSTOR 150Ltr |
| 10521801 | Standard uniSTOR 200Ltr |
| 10521901 | Standard uniSTOR 250Ltr |
| 105143 | Standard uniSTOR 300Ltr |
| Large capacity uniSTOR | |
| 105153 | Large capacity uniSTOR 500Ltr |
| 105155 | Large capacity uniSTOR 800Ltr |

Heat Pumps Product Range



| CODE | DESCRIPTION |
|-----------------------------|---|
| Air Source Heat Pump | |
| 200 | |
| 11275506 | Vitocal 200-A Heat & Cooling A04 4.2kW |
| 11275507 | Vitocal 200-A Heat & Cooling A06 5.7kW |
| 11275508 | Vitocal 200-A Heat & Cooling A08 7.0kW |
| 11275509 | Vitocal 200-A Heat & Cooling A10 9.5kW |
| 11275510 | Vitocal 200-A Heat & Cooling A13 10.3kW |
| 11275511 | Vitocal 200-A Heat & Cooling A16 11.8kW |
| 11275500 | Vitocal 200-A Heat Only A04 4.2kW |
| 11275501 | Vitocal 200-A Heat Only A06 5.7kW |
| 11275502 | Vitocal 200-A Heat Only A08 7.0kW |
| 11275503 | Vitocal 200-A Heat Only A10 9.5kW |
| 11275504 | Vitocal 200-A Heat Only A13 10.3kW |
| 11275505 | Vitocal 200-A Heat Only A16 11.8kW |

| CODE | DESCRIPTION |
|-----------------------------|---|
| Air Source Heat Pump | |
| 222 | |
| 11275512 | Vitocal 222-A Heat Only (Inc. Cylinder) A04 4.2kW |
| 11275513 | Vitocal 222-A Heat Only (Inc. Cylinder) A06 5.7kW |
| 11275514 | Vitocal 222-A Heat Only (Inc. Cylinder) A08 7.0kW |
| 11275515 | Vitocal 222-A Heat Only (Inc. Cylinder) A10 9.5kW |
| 11275517 | Vitocal 222-A Heat Only (Inc. Cylinder) A16 11.8kW |
| 11275518 | Vitocal 222-A Heat & Cooling (Inc. Cylinder) A04 4.2kW |
| 11275519 | Vitocal 222-A Heat & Cooling (Inc. Cylinder) A06 5.7kW |
| 11275520 | Vitocal 222-A Heat & Cooling (Inc. Cylinder) A08 7.0kW |
| 11275521 | Vitocal 222-A Heat & Cooling (Inc. Cylinder) A10 9.5kW |
| 11275522 | Vitocal 222-A Heat & Cooling (Inc. Cylinder) A13 10.3kW |
| 11275523 | Vitocal 222-A Heat & Cooling (Inc. Cylinder) A16 11.8kW |
| 11275505 | Vitocal 200-A Heat Only A16 11.8kW |

| CODE | DESCRIPTION |
|------------------------------|---|
| Air Source Heat Pump | |
| Heat Pump Accessories | |
| 11275526 | Viessmann Hydraulic connection set 5m |
| 11275527 | Viessmann Hydraulic connection set 10m |
| 11275528 | Viessmann Hydraulic connection set 15m |
| 11275529 | Viessmann Hydraulic connection set 20m |
| 11275530 | Viessmann Vitocell 100-W SVPA White 46L |
| 11275531 | Viessmann Vitocell 100-E SVPA 40L (Backpack buffer vessel) |
| 11275532 | Viessmann Heating circuit connection set - Top Connection |
| 11275533 | Viessmann Heating circuit connection set - Side Connection |
| 11275534 | Viessmann Ball valve with filter |
| 11275536 | Viessmann Contact thermostat |
| 11275538 | Viessmann Support for installing the outdoor unit on the floor |
| 11275539 | Viessmann Bracket set for mounting the outdoor unit on the wall |
| 11275544 | Viessmann Floorstanding installation connection set |
| 11275545 | Viessmann Wall mounting connection set |
| 11275546 | Viessmann Carrying handles for outdoor unit |
| 11275547 | Viessmann Cap set |
| 11275548 | Viessmann Electric ribbon heater |

Heat Pumps Product Range



Air Source Heat Pump

| CODE | DESCRIPTION |
|----------|---------------------------|
| 10770001 | CS7001iAW 5 Outdoor Unit |
| 10770101 | CS7001iAW 7 Outdoor Unit |
| 10770201 | CS7001iAW 9 Outdoor Unit |
| 10770501 | CS7400iAW 5 Outdoor Unit |
| 10770601 | CS7400iAW 7 Outdoor Unit |
| 10770701 | AWE Indoor Unit 5-9 |
| 10770301 | CS7000iAW 13 Outdoor Unit |
| 10770401 | CS7001iAW 17 Outdoor Unit |
| 10770801 | AWE Indoor Unit 13-17 |

Ground Source Heat Pump

| CODE | DESCRIPTION |
|--------|-----------------------------|
| 107290 | Greenstore LECP 6kW Combi |
| 107291 | Greenstore LECP 7kW Combi |
| 107292 | Greenstore LECP 9kW Combi |
| 107306 | Greenstore LECP 11kW Combi |
| 107307 | Greenstore LECP 6kW System |
| 107308 | Greenstore LECP 7kW System |
| 107309 | Greenstore LECP 9kW System |
| 107468 | Greenstore LECP 11kW System |

Heat Pump Accessories

| CODE | DESCRIPTION |
|----------|----------------------------------|
| 10771701 | CR10H |
| 10771801 | Filterset |
| 10771901 | Bracket Kit For MM100 |
| 10772001 | MM100 Mixer |
| 10772101 | Assembly INPA Hose |
| 10772201 | Heating Cable CSC/TS 2m/30W/230V |
| 10772301 | Heating Cable CSC/TS 3m/45W/230V |
| 10772401 | Heating Cable CSC/TS 5m/75W/230V |
| 10772501 | Dew Point Sensor |
| 10772601 | 3-Way Valve(WWV22-1) |
| 10772701 | 3-Way Valve(WW28-1) |
| 10772801 | CANbus Cable 2x20x0.75mm 15m |

Renewable Cylinders

| CODE | DESCRIPTION |
|----------|--------------------------------------|
| 10770901 | Green Storage WB Range Heat Pump 150 |
| 10771001 | Green Storage WB Range Heat Pump 180 |
| 10771101 | Green Storage WB Range Heat Pump 210 |
| 10771201 | Green Storage WB Range Heat Pump 250 |
| 10771301 | Green Storage WB Range Heat Pump 300 |

Hybrid

| | |
|----------|---------------------------------|
| 10771401 | Compress Hybrid 7000iAW AWM 5-9 |
|----------|---------------------------------|

Heat Pump Accessories

| CODE | DESCRIPTION |
|----------|------------------------------|
| 10772901 | CANbus Cable 2x20x0.75mm 30m |
| 10773001 | Sound Hood 5-9kW(Front) |
| 10773101 | Sound Hood 5-9kW(Back) |
| 10773201 | Sound Hood 13-17kW(Front) |
| 10773301 | Sound Hood 13-17kW(Back) |
| 10773401 | Alarm Buzzer |

Buffer Tank

| | |
|----------|-----------------------------|
| 107842 | AW / GS 120 Ltr Buffer Tank |
| 10771501 | 120 Litre Buffer Tank |
| 10771601 | 50 Litre Buffer Tank |

MAKE YOUR JOB EASIER WITH



www.primaflowfandp.co.uk

It's **quick, easy & convenient**

WHY ORDER ONLINE?



See the prices you pay at a glance

View your buying price, manufacturer list price and discount in one.



Check up-to-date stock levels

See live stock levels from your local branch.



Place an order after 5pm

Using the website to place orders allows you to do so at a time that suits you.



Invoice to Inbox

Review your order instantly with order confirmation emails sent as soon as you place the order online! This allows you to easily keep track of not just what you have ordered, but how many and the value of your order.



Enhanced product details

From manufacturer guarantees, features and benefits. The website holds a wealth of product information and technical detail, so you can answer customer questions easier and find the right product for their project.

1

VISIT

primaflowfandp.co.uk/register

2

REGISTER

Complete the registration form! You will need your account number to hand

3

ORDER

Start browsing! Your account will be approved within 24 hours of registering

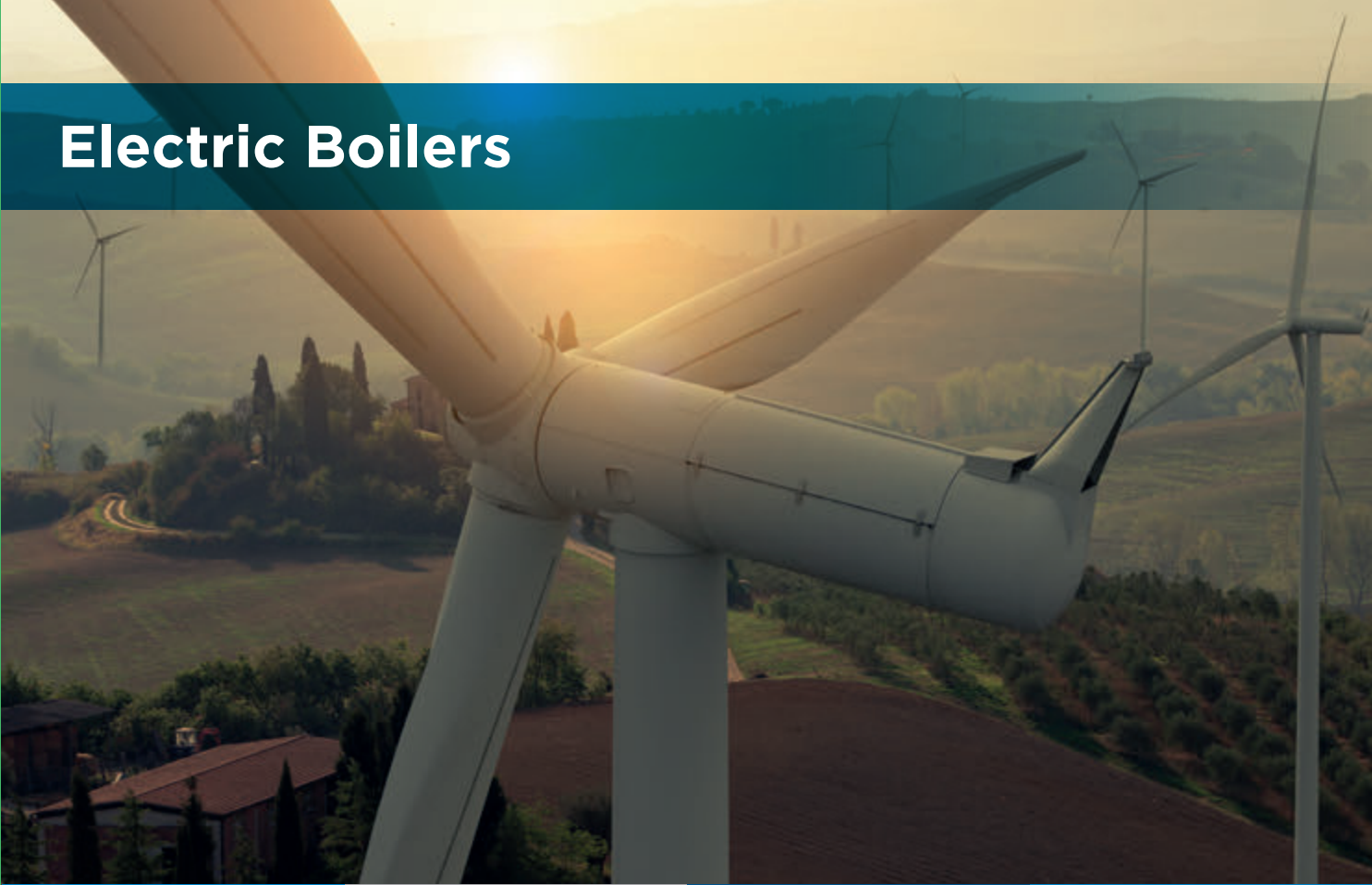
Everything you need all in one place:

**SEE YOUR PRICE
CHECK OUR STOCK
ORDER ONLINE**

SIGN UP TODAY!

Really all you need is your **Primaflow F&P account code**, the rest is an **email address and your personal information**. If you've never used the site before, registering is easy, and you could be up and running the next day.

Electric Boilers



Electric boilers are designed to work in a similar heating system to a natural gas boiler. Heating hot water for general use and supplying radiators for heating. Electric boilers can be controlled by traditional system controls, and are a strong option for situations where gas supplies might be difficult. They typically are a similar size to gas boilers so potentially offer a practical replacement option.

One advantage of electric boilers is that they have no moving parts and thus do not require annual safety certification and need minimal servicing. Another is the relatively small footprint they demand.

Electric Boilers Product Range

HEATRAE SADIA
SMARTER | CLEANER | WARMER



Heatrae Sadia Amptec



RL1 Relay



Heatrae Sadia Electromax

CODE DESCRIPTION

Amptec

2 year parts & labour

| | |
|--------|------------|
| 124870 | C400 4kW |
| 124871 | C600 6kW |
| 124872 | C900 9kW |
| 124873 | C1100 11kW |
| 124874 | C1200 12kW |

CODE DESCRIPTION

Amptec Underfloor

2 year parts & labour

| | |
|--------|----------------|
| 124341 | U401 U/F 4kW |
| 124342 | U601 U/F 6kW |
| 124343 | U901 U/F 9kW |
| 124344 | U1101 U/F 11kW |
| 124345 | U1201 U/F 12kW |

CODE DESCRIPTION

Amptec Accessories

| | |
|--------|-----------|
| 124346 | RL1 Relay |
| 124347 | RL2 Relay |
| 124348 | RL3 Relay |

CODE DESCRIPTION

Electromax

Electromax (c/w domestic hot water store)

| | |
|----------------------------------|----------------|
| 2 year parts & labour | |
| 124875 | 180 litres 9kW |
| 124867 | 180 litres 6kW |

CODE DESCRIPTION

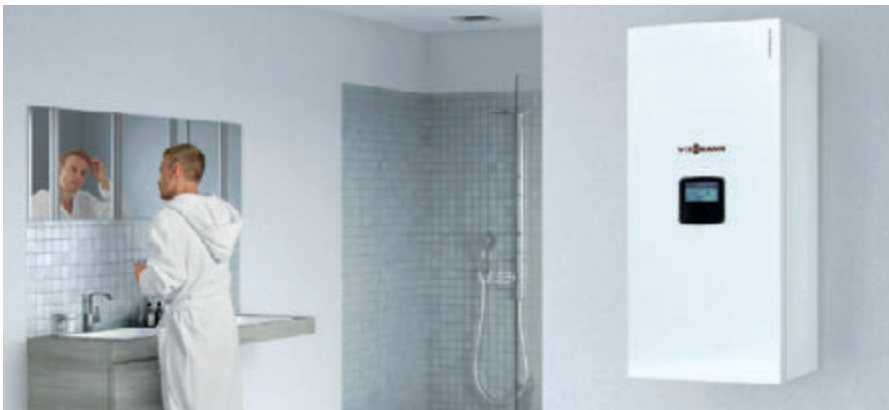
Electromax

Electromax Underfloor (c/w domestic hot water store)

2 year parts & labour

| | |
|--------|----------------|
| 124876 | 180 litres 9kW |
|--------|----------------|

* 10 year on-site parts and labour on the cylinders, 2 year on the boiler and other controls



VIESSMANN

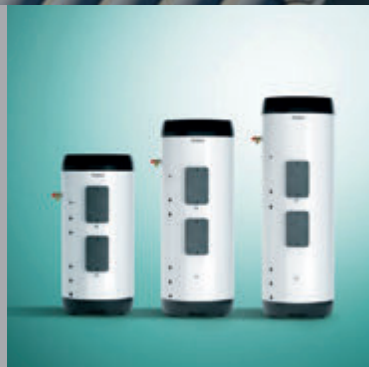
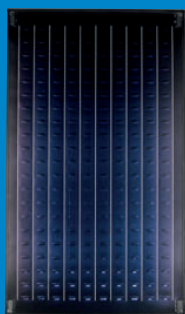


CODE DESCRIPTION

Electric Boilers

| | |
|----------|---|
| 11275100 | Vitotron 100 Electric boiler 3-8 kW WC |
| 11275101 | Vitotron 100 Electric boiler 3-24 kW WC |
| 11275102 | Vitotron 100 Electric boiler 3-8 kW CT |
| 11275103 | Vitotron 100 Electric boiler 3-24 kW CT |

Solar Product Range



Solar power harnesses the power of the sun, and turns free / natural energy into usable heat or electricity. Transferring this energy into a cylinder to store hot water to be used in the central heating system, or electricity to power electric radiators, underfloor heating or point of use water heaters.

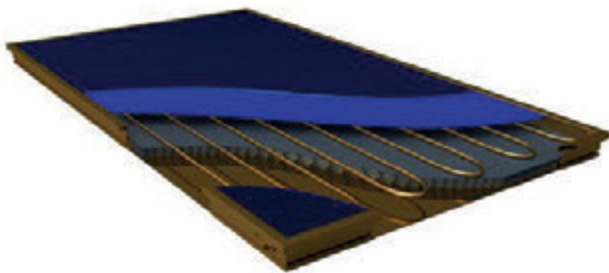


CODE DESCRIPTION

Solar

| | |
|----------|----------------------------|
| 25838512 | SL Plus HP 180 Solar EE UV |
| 25838515 | SL Plus HP 210 Solar EE UV |
| 25838518 | SL Plus HP 250 Solar EE UV |
| 25838520 | SL Plus HP 300 Solar EE UV |
| 25838522 | SL Plus HP 400 Solar EE UV |

Solar Product Range



| CODE | DESCRIPTION |
|--|---|
| Cylinders & Thermal Stores | |
| Quick Recovery Integrated Cylinders | |
| 10663317 | Quick Recovery Integrated Single Coil 210 Lt cylinder |
| 10663318 | Quick Recovery Single Coil 150 Lt cylinder |
| 10663319 | Quick Recovery Single Coil 180 Lt cylinder |
| 10663320 | Quick Recovery Single Coil 210 Lt cylinder |
| 10663321 | Quick Recovery Single Coil 250 Lt cylinder |
| 10663322 | Quick Recovery Single Coil 300 Lt cylinder |

| CODE | DESCRIPTION |
|---|--|
| Quick Recovery Single Coil Pre-Plumbed Cylinders | |
| 10663323 | Quick Recovery Pre-Plumbed Single Coil 210 Lt cylinder |
| 10663324 | Quick Recovery Pre-Plumbed Single Coil 250 Lt cylinder |
| 10663325 | Quick Recovery Pre-Plumbed Single Coil 300 Lt cylinder |

| CODE | DESCRIPTION |
|--|---|
| Quick Recovery Single Coil Slimline Cylinders | |
| 10663326 | Quick Recovery Single Coil Slimline 150 Lt cylinder |
| 10663327 | Quick Recovery Single Coil Slimline 180 Lt cylinder |
| 10663328 | Quick Recovery Single Coil Slimline 210 Lt cylinder |

| CODE | DESCRIPTION |
|---|--|
| Cylinders & Thermal Stores | |
| Quick Recovery Twin Coil Cylinders | |
| 10663329 | Quick Recovery Twin Coil 210 Lt cylinder |
| 10663330 | Quick Recovery Twin Coil 250 Lt cylinder |
| 10663331 | Quick Recovery Twin Coil 300 Lt cylinder |
| Accessories | |
| 10663316 | Quick Recovery Cylinder Plinth |
| 10663332 | 30 Litre external volumiser c/w 3kW backup heater |
| 10663325 | Quick Recovery Pre-Plumbed Single Coil 300 Lt cylinder |

| CODE | DESCRIPTION |
|---------------------------|--|
| Solar Thermal | |
| Solar Thermal kits | |
| 10663362 | Grant Grant Solar Thermal 3 collector bronze in-roof (tile) landscape kit |
| 10663363 | Grant Grant Solar Thermal 1 collector bronze on-roof Portrait kit |
| 106805 | Grant Grant Solar Thermal 2 collector bronze on-roof Portrait kit |
| 107077 | Grant Grant Solar Thermal 1 collector bronze in-roof (tile) Portrait kit |
| 10663364 | Grant Grant Solar Thermal 1 collector bronze in-roof (tile) landscape kit |
| 10663365 | Grant Grant Solar Thermal 1 collector bronze in-roof (slate) Portrait kit |
| 10663366 | Grant Grant Solar Thermal 2 collector bronze in-roof (slate) Portrait kit |
| 10663367 | Grant Grant Solar Thermal 2 collector bronze in-roof (slate) landscape kit |
| 10663368 | Grant Grant Solar Thermal 3 collector bronze in-roof (slate) Portrait kit |
| 10663369 | Grant Grant Solar Thermal 2 collector bronze on-roof Landscape kit |
| 106806 | Grant Grant Solar Thermal 3 collector bronze on-roof Portrait kit |
| 106807 | Grant Grant Solar Thermal 2 collector bronze in-roof (tile) Portrait kit |
| 10663370 | Grant Grant Solar Thermal 2 collector bronze in-roof (tile) landscape kit |
| 106808 | Grant Grant Solar Thermal 3 collector bronze in-roof (tile) Portrait kit |
| 106809 | Grant Grant Solar Thermal 2 collector bronze flat-roof Portrait kit |

| CODE | DESCRIPTION |
|----------------------------------|---|
| Solar Thermal | |
| WinterSOL kit | |
| 106994 | Grant WinterSOL kit |
| CombiSOL kit | |
| 106830 | Grant CombiSOL kit |
| Solar Thermal accessories | |
| 10663336 | Grant 1.2 METRE 15mm foil-faced insulation |
| 10663337 | Grant 1.2 METRE 22mm foil-faced insulation |
| 10663338 | Grant 2 METRE 15mm Armaflex insulation |
| 10663339 | Grant 2 METRE 22mm Armaflex insulation |
| 10663340 | Grant connection kit - lead flashing (pack of two) |
| 10663341 | Grant 2x 15mm -12mm Landscape reducing elbows |
| 106828 | Grant connection kit - acrylic coated lead flashing (pack of two) |
| 107076 | Grant 2-port high temperature valve 22mm |
| 10663342 | Grant 3-port high temperature valve 22mm |
| 10663343 | Grant SD3X Controller (for east/west systems) |
| 10663344 | Grant Connection Kit Collector to Collector |
| 10663345 | Grant Expansion Vessel 18 litre |
| 10663346 | Grant Expansion Vessel 25 litre |
| 10663347 | Grant Expansion Vessel Bracket & Valve |

| CODE | DESCRIPTION |
|----------------------------------|---|
| Solar Thermal | |
| Solar Thermal accessories | |
| 10663349 | Grant 10 litre Solar Fluid (Glycol) |
| 107073 | Grant 20 litre Solar Fluid (Glycol) |
| 10663350 | Grant Insulated pipe clips (pack of four) |
| 10663351 | Grant Anchors for slate tile (pack of 2) |
| 10663352 | Grant Anchors for flat tile (pack of 2) |
| 10663353 | Grant Filling station |
| 10663354 | Grant Connection Kit Flow & Return |
| 10663355 | Grant Anchors for profile tile (pack of 2) |
| 10663356 | Grant GSX1 Controller |
| 107075 | Grant Solar fluid recovery container (including safety valve) |
| 10663357 | Grant 15mm Connector flex pipe compression fitting (DN16) (2pc) |
| 10663358 | Grant Connector (between two pipes) (DN16) (2pc) |
| 10663359 | Grant 3/4 Female connector (DN16) (2pc) |
| 10663360 | Grant 10 METRE insulated flex solar pipe (DN16) |
| 107078 | Grant 15 METRE insulated flex solar pipe (DN16) |
| 10663361 | Grant 25 METRE insulated flex solar pipe (DN16) |

Solar Product Range

HEATRAE SADIA
SMARTER | CLEANER | WARMER



CODE DESCRIPTION

Solar Cylinders

| | |
|--------|----------------------------------|
| 124168 | Sadia Premier + Ind190 Ltr Solar |
| 124169 | Sadia Premier + Ind210 Ltr Solar |
| 124170 | Sadia Premier + Ind250 Ltr Solar |
| 124171 | Sadia Premier + Ind300 Ltr Solar |
| 124172 | Sadia Premier + Dir170 Ltr Solar |
| 124173 | Sadia Premier + Dir210 Ltr Solar |
| 124174 | Sadia Premier + Dir260 Ltr Solar |
| 124175 | Sadia Premier + Dir300 Ltr Solar |

CODE DESCRIPTION

Solar Cylinders

| | |
|--------|--------------------------------|
| 124273 | Sadia Megaflo Solar Eco 300SDD |
| 124250 | Sadia Megaflo Solar Eco 190si |
| 124251 | Sadia Megaflo Solar Eco 210si |
| 124252 | Sadia Megaflo Solar Eco 250si |
| 124253 | Sadia Megaflo Solar Eco 300 si |
| 124270 | Sadia Megaflo Solar Eco 170SDD |
| 124271 | Sadia Megaflo Solar Eco 210SDD |
| 124272 | Sadia Megaflo Solar Eco 260SDD |

Vaillant



CODE DESCRIPTION

Solar Control

| | |
|--------|--------------------|
| 105136 | VRS 570 Solar Cntr |
|--------|--------------------|

CODE DESCRIPTION

Solar Accessories

| | |
|--------|------------------------------|
| 105850 | Solar NTC Sensor VR10 |
| 105669 | Solar Discharge Vesl |
| 105816 | Solar Exp Ves Conn t |
| 105836 | Solar Automatic Air perator |
| 105849 | Solar NTC Coll Sensor VR11 |
| 105663 | Solar 18 Ltr Protection Vesl |
| 105668 | Solar Filling Pump Trolley |



CODE DESCRIPTION

Solar Cylinders

| | |
|--------|---------------------------------|
| 105206 | auroSTOR Twin Coil Solar 200Ltr |
| 105207 | auroSTOR Twin Coil Solar 250Ltr |
| 105208 | auroSTOR Twin Coil Solar 300Ltr |
| 105215 | Large capacity auroSTOR 500Ltr |
| 105819 | 18 Ltr Exp Ves |
| 105841 | Solar Exp Ves 50 Ltr For F/S |
| 105842 | Solar Exp Ves 80 Ltr For F/S |

Solar Product Range



Solar Panels

| CODE | DESCRIPTION |
|--------|-----------------------------------|
| 107364 | Solar Lito Coll |
| 107485 | Solar Lifestyle Pnl Portrait |
| 107470 | Solar Lifestyle On Roof Portrait |
| 107471 | Solar Lifestyle In Roof Portrait |
| 107474 | Solar Lito 1 Pnl Roof Kit |
| 107472 | Solar Lifestyle On Roof Landscape |
| 107486 | Solar Lifestyle Pnl Landscape |

Solar Control

| CODE | DESCRIPTION |
|--------|----------------------------------|
| 108458 | Worcester Solar Control TDS100-2 |

Solar Accessories

| CODE | DESCRIPTION |
|--------|-----------------------------------|
| 107480 | Solar Flat Plate Plumb Kit Sngl |
| 108457 | Solar Safety Relief Dschrg Bottle |
| 107993 | Solar Lito On Roof Conn Set |
| 108432 | Solar Special Roof Hook Kit |
| 108794 | TF2 Temperature Sensor NTC 20K |
| 107482 | Solar Lito Rail 1st Pnl |
| 107475 | Solar Lito 2 Pnl Roof Kit |
| 108922 | Solar Plain Tile/ Adj Roof |
| 107481 | Solar Flat Plate Plumb Std Twin |

Solar Accessories

| CODE | DESCRIPTION |
|--------|-----------------------------------|
| 107483 | Solar Lito Additional Pnl |
| 108000 | Solar Fluid 20 Ltr |
| 108454 | Solar Exp Ves Conn AAS1 |
| 107990 | Solar Lifestyle In Roof Conn Set |
| 107983 | Flat Portrait Spprt Additionl Pnl |
| 107991 | Solar Lifestyle t Flat Roof |
| 107802 | In Roof Slate Exten V Sky-C/T |
| 107801 | In Roof Slate Basis V Sky-C/T |
| 108748 | Solar Station AGS10-2 |
| 107995 | Solar Lito Flat Roof Basic |
| 108510 | Solar Lux Pre-Cooling Vesl |
| 107490 | Landscape 1 Pnl In Roof Flashing |
| 107989 | Solar Lifestyle On Roof Conn Set |
| 107982 | Flat Roof Portrait Spprt 1st Pnl |
| 108916 | ELT5 Air Vent Set |
| 107479 | Solar Flat Plate Plumb Kit |
| 107992 | Solar Lito ries Conn |
| 107497 | Plain Tile Roof Hook t |
| 107493 | On Roof Portrait Rail 1st Pnl |
| 108447 | Solar Expansion Vessel SAG 25 |
| 108749 | Solar Station AGS10E-2 |
| 107809 | Landscape 1 Pnl In Roof Flsh Tile |

Solar Cylinders

| CODE | DESCRIPTION |
|----------|--|
| 10765101 | Green Storage WB Range Unvented Solar 180 Cylinder |
| 10765201 | Green Storage WB Range Unvented Solar 210 Cylinder |
| 10765301 | Green Storage WB Range Unvented Solar 250 Cylinder |
| 10765401 | Green Storage WB Range Unvented Solar 300 Cylinder |



Heat Recovery Units, Underfloor Heating and Air Conditioning.



BAXI



| CODE | DESCRIPTION |
|---------------------------|------------------------|
| Heat Recovery Unit | |
| 10358101 | Assure Vertical SHRU |
| 10358201 | Assure Horizontal SHRU |

HEATRAE SADIA
SMARTER | CLEANER | WARMER



| CODE | DESCRIPTION |
|--|--|
| Continuous Extraction Ventilation Systems | |
| 12499601 | Heatrae CVE ECO2 Continuous Extraction U |
| 12499701 | Heatrae Sadia CVE ECO2 Wired Controller |



| CODE | DESCRIPTION |
|----------------------------|------------------------------|
| Heat Recovery Units | |
| 124992 | Sadia Advance G4 |
| 12439201 | Sadia Advance PLUS MVHR Unit |

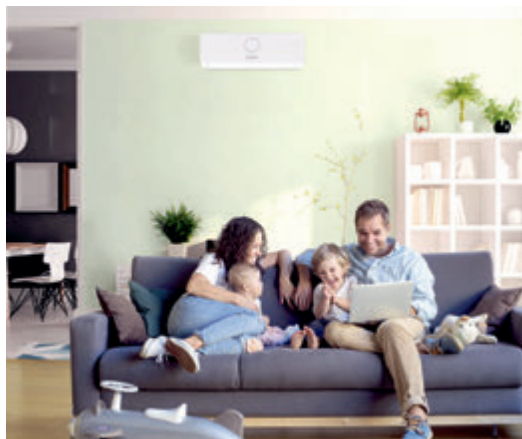
Heat Recovery Units, Underfloor Heating and Air Conditioning



| CODE | DESCRIPTION |
|------------------------------------|---|
| Electric Underfloor Heating | |
| 11275400 | Viessmann Vitoplanar EF2 150w Underfloor Heating Mat (Ceramic) |
| 11275401 | Viessmann Vitoplanar EF2 300w Underfloor Heating Mat (Ceramic) |
| 11275402 | Viessmann Vitoplanar EF2 450w Underfloor Heating Mat (Ceramic) |
| 11275403 | Viessmann Vitoplanar EF2 600w Underfloor Heating Mat (Ceramic) |
| 11275404 | Viessmann Vitoplanar EF2 860w Underfloor Heating Mat (Ceramic) |
| 11275405 | Viessmann Vitoplanar EF2 1000w Underfloor Heating Mat (Ceramic) |
| 11275406 | Viessmann Vitoplanar EF2 1270w Underfloor Heating Mat (Ceramic) |

| CODE | DESCRIPTION |
|------------------------------------|---|
| Electric Underfloor Heating | |
| 11275407 | Viessmann Vitoplanar EF2 150w U/floor Heating Mat (Ceramic) SET |
| 11275408 | Viessmann Vitoplanar EF2 300w Underfloor Heating Mat (Ceramic) SET |
| 11275409 | Viessmann Vitoplanar EF2 450w Underfloor Heating Mat (Ceramic) SET |
| 11275410 | Viessmann Vitoplanar EF2 600w Underfloor Heating Mat (Ceramic) SET |
| 11275411 | Viessmann Vitoplanar EF2 860w Underfloor Heating Mat (Ceramic) SET |
| 11275412 | Viessmann Vitoplanar EF2 1000w Underfloor Heating Mat (Ceramic) SET |
| 11275413 | Viessmann Vitoplanar EF2 1270w Underfloor Heating Mat (Ceramic) SET |

| CODE | DESCRIPTION |
|------------------------------------|---|
| Electric Underfloor Heating | |
| 11275414 | Viessmann Vitoplanar Cable Connection Set 5m |
| 11275415 | Viessmann Vitoplanar Cable Connection Set 10m |



| CODE | DESCRIPTION |
|-------------------------|-------------------|
| Air Conditioning | |
| 10767201 | CL3000i-Set 35 WE |
| 10767001 | CL3000iU W 26 E |
| 10766901 | CL3000i-Set 26 WE |
| 10767501 | CL3000i-Set 53 WE |
| 10767301 | CL300iU W 35 E |
| 10767101 | CL3000i 26 E |
| 10758601 | RAC 5000 35-2 Kit |

| CODE | DESCRIPTION |
|-------------------------|--------------------------------|
| Air Conditioning | |
| 10761201 | Climate 5000 RAC 53-2 IBW |
| 10758501 | RAC 5000 26-2 Kit |
| 10760201 | Climate 5000 MS CL5000MS 36 OU |
| 10758801 | RAC 5000 7-2 Kit |
| 10760001 | Climate 5000 MS CL5000MS 18 OU |
| 10767801 | CL3000i-Set 70 WE |
| 10767601 | CL3000iU W 35 E |

| CODE | DESCRIPTION |
|-------------------------|--------------------------------|
| Air Conditioning | |
| 10760301 | Climate 5000 MS CL5000MS 42 OU |
| 10767701 | CL3000i 53 E |
| 10760101 | Climate 5000 MS CL5000MS 27 OU |
| 10759001 | SCAC Climate 5000 24 Cassette |
| 10759901 | Cassette Panel 24/36/48 |
| 10768101 | Wi-Fi Gateway |

Heat Networks



Heat networks are usually centralised energy networks that are designed to feed a number of individual properties or commercial units from an individual plant room or a full scale dedicated plant. This communal energy source is linked to the community it feeds through a dedicated network which is metered to control the amount of heat & hot water each space uses at the point of use.

In such heat networks, the heating and hot water are controlled via a heat interface unit (HIU) that operates as a classic heating system would. The energy used (typically steam) is metered and charged accordingly with the rates of energy consumption being calculated and charged by the heat generation network.

HIU's are a sustainable option for multi-occupancy buildings based on using renewable fuels as the original source of heat generation, e.g. ground source heat pumps or biomass boilers.

In Sheffield there is a heat network in operation from a waste processing facility, where steam is a by-product being reused for domestic and commercial heating in nearby buildings. The network heats more than 125 buildings from universities to hotels and residential housing. By recycling over 120,000 tonnes of black bin waste, the network is able to generate 100,000 megawatt hours of energy and is typically saving 13,000 tonnes of CO₂ every year (the equivalent of removing 2,800 cars from UK roads).

HIU - Heat Interface Unit



| CODE | DESCRIPTION |
|---------------------------------------|---|
| HIU - INDIRECT | |
| INDIRECT - NO METER | |
| 10285134 | Ideal FIRST FIX KIT POD HIU INDIRECT |
| 10285135 | Ideal POD HIU INDIRECT I305 NO METER |
| 10285136 | Ideal POD HIU INDIRECT I405 NO METER |
| 10285137 | Ideal POD HIU INDIRECT I505 NO METER |
| 10285138 | Ideal POD HIU INDIRECT I605 NO METER |
| 10285139 | Ideal POD HIU INDIRECT I705 NO METER |
| INDIRECT - WIRED MBUS METER | |
| 10285140 | Ideal POD HIU INDIRECT I305 WIRED MBUS METER |
| 10285141 | Ideal POD HIU INDIRECT I405 WIRED MBUS METER |
| 10285142 | Ideal POD HIU INDIRECT I505 WIRED MBUS METER |
| 10285143 | Ideal POD HIU INDIRECT I605 WIRED MBUS METER |
| 10285144 | Ideal POD HIU INDIRECT I705 WIRED MBUS METER |
| INDIRECT - WIRELESS MBUS METER | |
| 10285145 | Ideal POD HIU INDIRECT I305 WIRELESS MBUS METER |
| 10285146 | Ideal POD HIU INDIRECT I405 WIRELESS MBUS METER |
| 10285147 | Ideal POD HIU INDIRECT I505 WIRELESS MBUS METER |
| 10285148 | Ideal POD HIU INDIRECT I605 WIRELESS MBUS METER |
| 10285149 | Ideal POD HIU INDIRECT I705 WIRELESS MBUS METER |

| CODE | DESCRIPTION |
|-------------------------------------|--|
| HIU - DIRECT | |
| DIRECT - NO METER | |
| 10285150 | Ideal FIRST FIX KIT POD HIU DIRECT |
| 10285151 | Ideal POD HIU DIRECT D30 NO METER |
| 10285152 | Ideal POD HIU DIRECT D40 NO METER |
| 10285153 | Ideal POD HIU DIRECT D50 NO METER |
| 10285154 | Ideal POD HIU DIRECT D60 NO METER |
| DIRECT - WIRED MBUS METER | |
| 10285155 | Ideal POD HIU DIRECT D30 WIRED MBUS METER |
| 10285156 | Ideal POD HIU DIRECT D40 WIRED MBUS METER |
| 10285157 | Ideal POD HIU DIRECT D50 WIRED MBUS METER |
| 10285158 | Ideal POD HIU DIRECT D60 WIRED MBUS METER |
| DIRECT - WIRELESS MBUS METER | |
| 10285159 | Ideal POD HIU DIRECT D30 WIRELESS MBUS METER |
| 10285160 | Ideal POD HIU DIRECT D40 WIRELESS MBUS METER |
| 10285161 | Ideal POD HIU DIRECT D50 WIRELESS MBUS METER |
| 10285162 | Ideal POD HIU DIRECT D60 WIRELESS MBUS METER |
| HIU - ACCESSORIES | |
| 10285163 | Ideal CREDIT CONTROL VALVE KIT |
| 10285164 | Ideal FLUSHING BYPASS PERMANENT KIT |
| 10285165 | Ideal FLUSHING BYPASS UNION KIT (1 PAIR) |
| 10285166 | Ideal FLUSHING BYPASS TEMPORARY KIT |
| 10285167 | Ideal HEAT METER WIRED MBUS KIT |
| 10285168 | Ideal HEAT METER WIRELESS MBUS KIT |



| CODE | DESCRIPTION |
|------------|------------------------------------|
| HIU | |
| 107351 | Greenstar HIU E + C/W Heat meter |
| 107352 | Greenstar HIU With Heat meter |
| 107509 | Greenstar HIU E Without Heat meter |
| 107517 | Greenstar HIU Flusing Valve |





WE SIMPLY DELIVER MORE

The UK's biggest plumbing, heating and bathroom wholesaler

RENEWABLES



www.primaflowfandp.co.uk